

WAAS CH <b>82228</b> <b>W08A</b>	APP CRS <b>082°</b>	Rwy Idg <b>12000</b> TDZE <b>5354</b> Apt Elev <b>5434</b>
--	------------------------	--

# RNAV (GPS) Y RWY 8

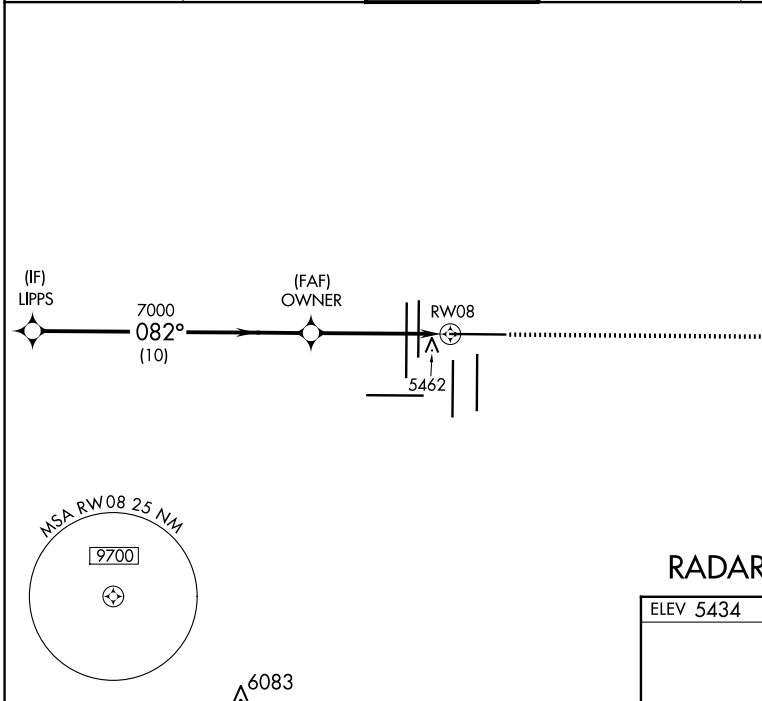
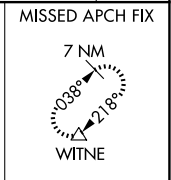
DENVER INTL (DEN)

▼ For uncompensated Baro-VNAV systems, LNAV/VNAV NA below -25°C (-13°F) or above 47°C (117°F). Simultaneous approach authorized with Rwy 7. DME/DME RNP-0.3 NA. LNAV procedure NA during simultaneous operations. Use of FD or AP providing RNAV track guidance required during simultaneous operations. For inoperative MALSR, increase LNAV Cat C/D visibility to RVR 5500. # RVR 1800 authorized with use of FD or AP or HUD to DA.



MISSED APPROACH: Climb to 10000 direct KVERN and on track 041° to WITNE and hold.

D-ATIS <b>125.6 379.9</b> (ARR) <b>134.025</b> (DEP)	DENVER APP CON <b>119.3 307.3</b> (N) <b>120.35 379.3</b> (S)	DENVER TOWER <b>132.35 239.275</b>	GND CON <b>121.35 379.175</b> (W) <b>121.85 377.1</b> (E)	CLNC DEL <b>118.75</b>	CPDLC
--	---	---------------------------------------	---	---------------------------	-------



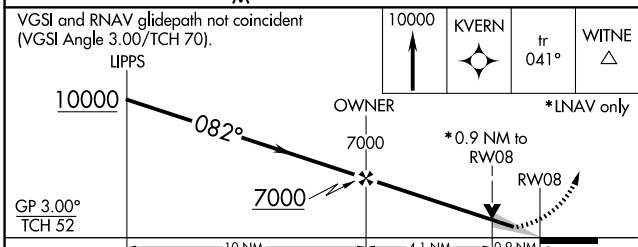
SW-1, 15 MAY 2025 to 12 JUN 2025

SW-1, 15 MAY 2025 to 12 JUN 2025

## RADAR REQUIRED

ELEV 5434	<input checked="" type="checkbox"/> TDZE 5354
-----------	---

HIRL all Rwws  
TDZ/CL Rwws 7, 16L, 16R, 17R, 26, 34L, 34R, 35L, 35R



CATEGORY	A	B	C	D
LPV DA #	5554/24		200 (200-½)	
LNAV/VNAV DA	5833/60		479 (400-1¼)	
LNAV MDA	5720/24 366 (300-½)		5720/35 366 (300-⅝)	