

ILS or LOC RWY 34L

DENVER INTL (DEN)

LOC/DME I-DXU 111.9 Chan 56	APP CRS 353°	Rwy Idg TDZE 5327 Apt Elev 5434
--	------------------------	---

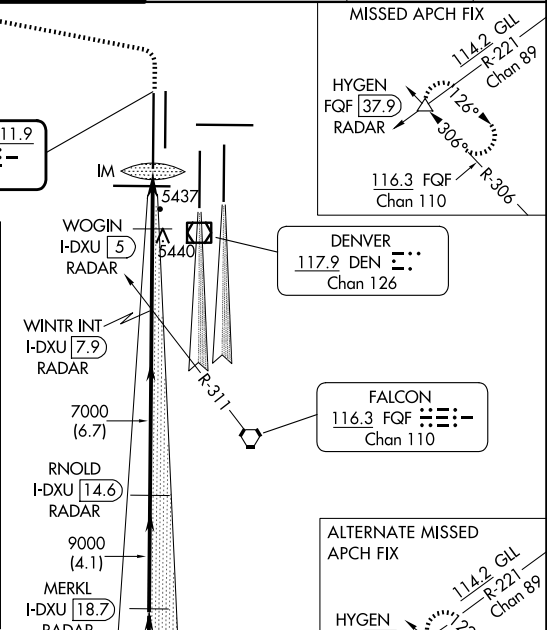
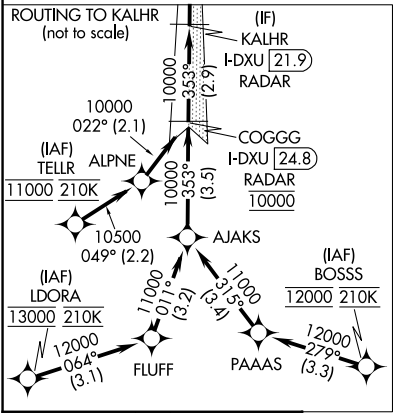
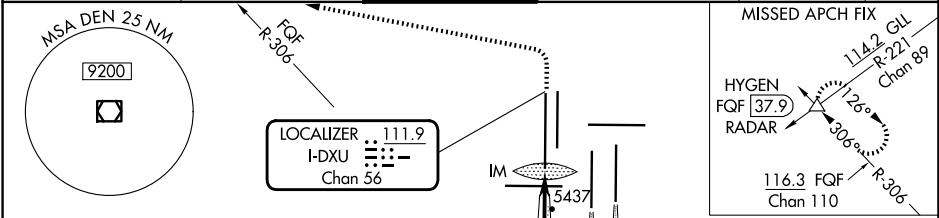
RNAV-1 GPS or RADAR required for procedure entry. From LDORA, BOSS, TELL: RNAV-1 GPS required. DME or RADAR required.

Simultaneous approach authorized with Rwy 35L/R. For inop ALS, increase S-LOC Cat C and D visibility to RVR 5500.

ALSF-2

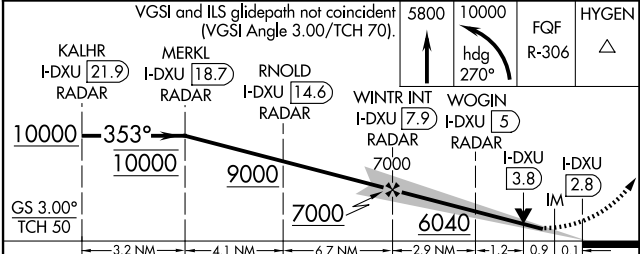
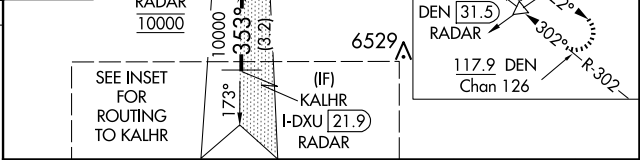
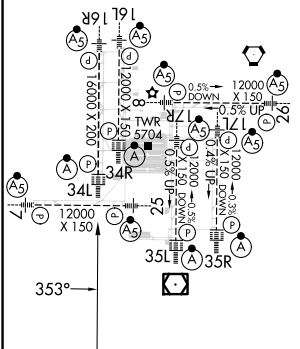
MISSED APPROACH: Climb to 5800 then climbing left turn to 10000 on heading 270° and FQF VORTAC R-306 to HYGEN/FQF 37.9 DME/RADAR and hold.

D-ATIS 125.6 379.9 (ARR) 134.025 (DEP)	DENVER APP CON 119.3 307.3 (N) 120.35 379.3 (S)	DENVER TOWER 135.3 351.95	GND CON 121.35 379.175 (W) 121.85 377.1 (E)	CLNC DEL 118.75	CPDLC
--	---	-------------------------------------	---	---------------------------	-------



ELEV 5434	TDZE 5327
-----------	-----------

HIRL all Rwy's
TDZ/CL Rwy's 7, 16L, 16R, 17R, 26, 34L, 34R, 35L, 35R



CATEGORY	A	B	C	D
S-ILS 34L	5527/18 200 (100-½)			
S-LOC 34L	5700/24 373 (300-½)		5700/35 373 (300-¾)	

FAF to MAP 5.1 NM					
Knots	60	90	120	150	180
Min:Sec	5:06	3:24	2:33	2:02	1:42

SW-1, 15 MAY 2025 to 12 JUN 2025

SW-1, 15 MAY 2025 to 12 JUN 2025