

VOR/DME BWS	APP CRS	Rwy Idg	9207
109.6	038°	TDZE	4151
Chan 33		Apt Elev	4199

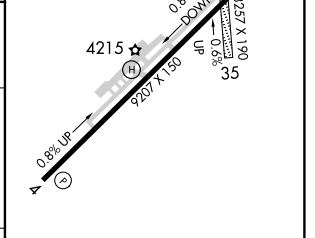
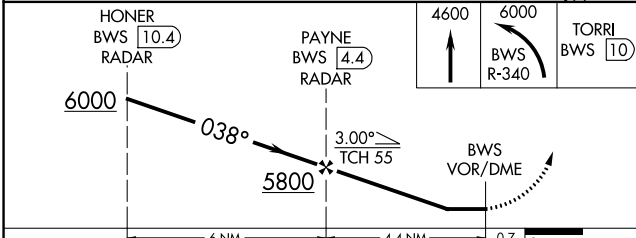
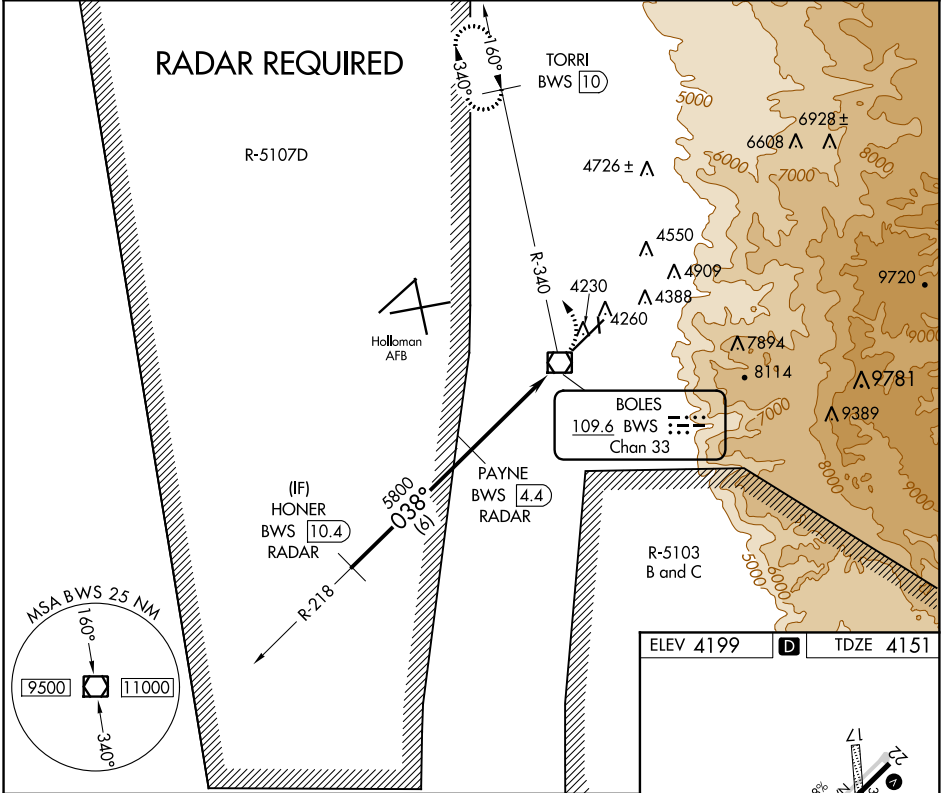
VOR RWY 4

ALAMOGORDO-WHITE SANDS RGNL (A.I.M)

⚠ Circling NA to Rwys 17 and 35. Circling NA southeast of Rwy 4-22. DME required. Civil aircraft require ATC clearance prior to entering Restricted Area 5107D. Procedure NA when Holloman Approach Control closed.

MISSED APPROACH: Climb to 4600 then climbing left turn to 6000 on BWS VOR/DME R-340 to TORRI/BWS 10 DME and hold.

AWOS-3 127.825	HOLLOMAN APP CON * 120.6 269.225	ALBUQUERQUE CENTER 132.65 257.6 (When tower closed)	UNICOM 122.8 (CTAF) ⓪
--------------------------	--	--	--



CATEGORY	A	B	C	D
S-4		4500-1	349 (400-1)	
C CIRCLING	4680-1 481 (500-1)	4720-1 521 (600-1)	4860-1 3/4 661 (700-1 3/4)	5300-3 1101 (1200-3)

REIL Rwys 4 and 22

MIRL Rwy 4-22 **⓪**

SW-1, 01 FEB 2018 to 01 MAR 2018

SW-1, 01 FEB 2018 to 01 MAR 2018