

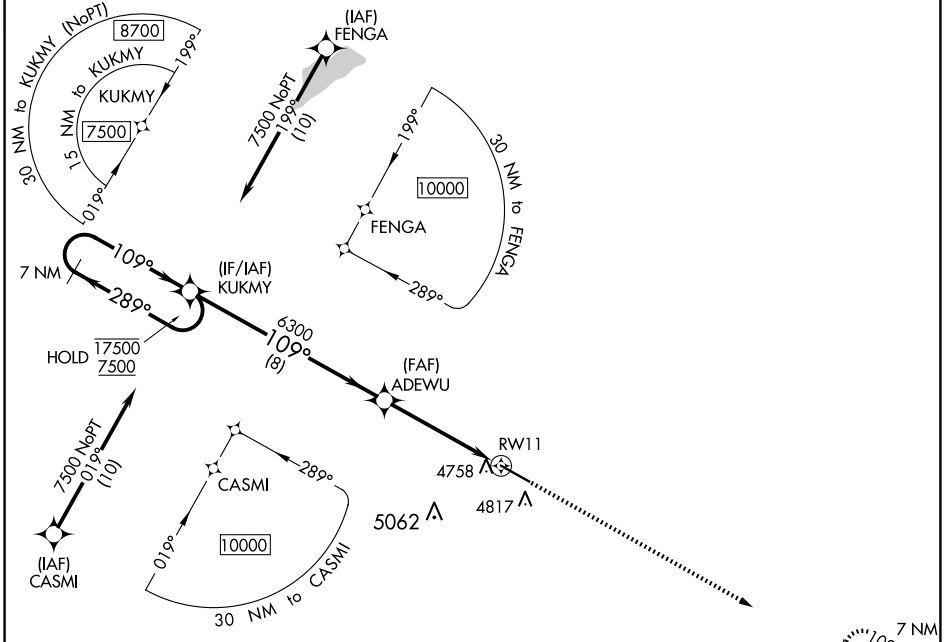
WAAS CH <b>82340</b> <b>W11A</b>	APP CRS <b>109°</b>	Rwy Idg TDZE Apt Elev	<b>7001</b> <b>4716</b> <b>4716</b>
--	------------------------	-----------------------------	---

# RNAV (GPS) RWY 11

COLORADO PLAINS RGNL (AKO)

RNP APCH ▼ Rwy 11 helicopter visibility reduction below 3/4 SM NA. ▲ For uncompensated Baro-VNAV systems, LNAV/VNAV NA below -22°C or above 54°C.	MISSED APPROACH: Climb to 7500 direct JUBOS and hold.
---	---

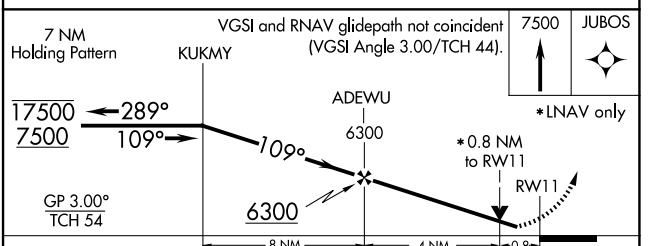
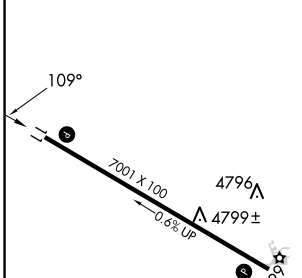
ASOS <b>135.475</b>	DENVER CENTER <b>133.95 317.55</b>	UNICOM <b>122.8 (CTAF) 0</b>
------------------------	---------------------------------------	---------------------------------



SW-1, 15 MAY 2025 to 12 JUN 2025

SW-1, 15 MAY 2025 to 12 JUN 2025

ELEV 4716	TDZE 4716
-----------	-----------



CATEGORY	A	B	C	D
LPV DA		4966-1	250 (300-1)	
LNAV/VNAV DA		4966-1	250 (300-1)	
LNAV MDA		5020-1	304 (400-1)	
<input checked="" type="checkbox"/> CIRCLING	5140-1 424 (500-1)	5260-1 544 (600-1)	5420-2 704 (800-2)	5420-2 1/4 704 (800-2 1/4)

MIRL Rwy 11-29 0  
REIL Rwy 11 and 29 0