

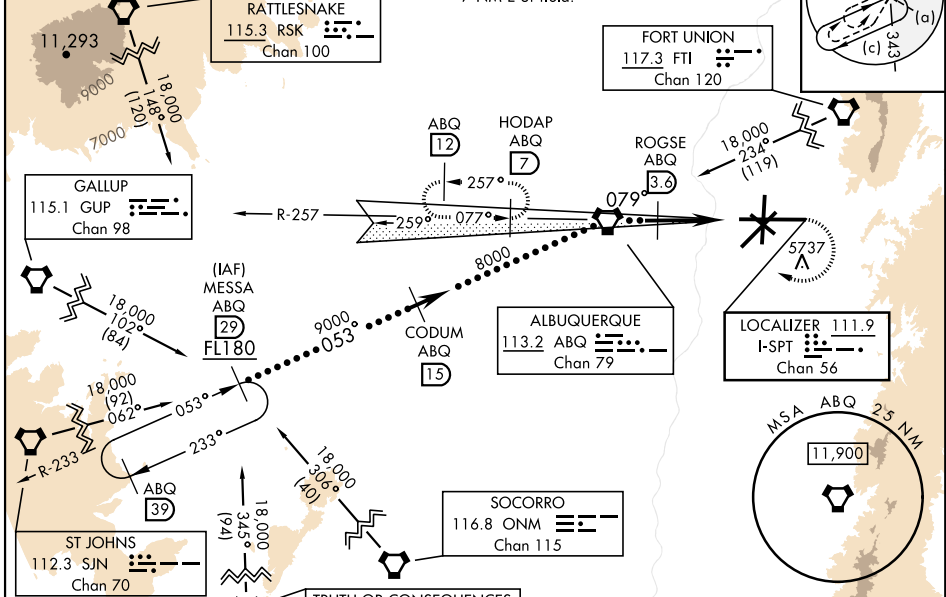
HI-ILS or LOC RWY 8

LOC I-SPT 111.9	APCH CRS 079°	Rwy ldg 12,793 TDZE 5320 Arprt Elev 5355	[USAF] ALBUQUERQUE INTL SUNPORT (KIRTLAND AFB) (KABQ)
---------------------------	-------------------------	---------------------------------------------------------------------	-------------------------------------------------------

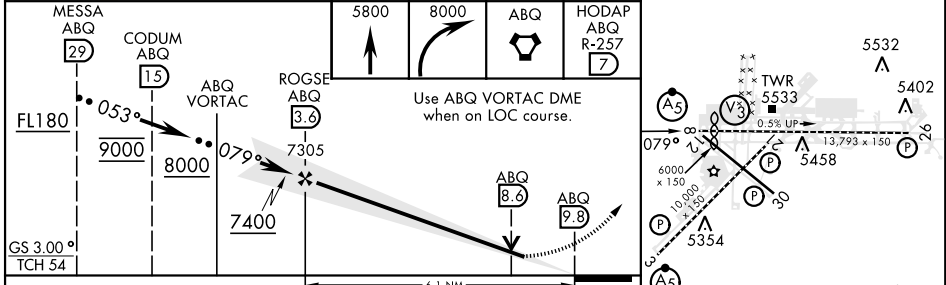
DME required
 * When ALS inop, increase RVR to 40 and vis to 3/4 mile.
 ** When ALS inop, increase RVR to 60 and vis to 1 1/2 miles.

ATIS 118.0 257.7	APP CON 123.9 354.1	TOWER 120.3 351.9	GND CON 121.9 348.6	CLNC DEL 119.2 259.3	ASR
----------------------------	-------------------------------	-----------------------------	-------------------------------	--------------------------------	-----

*** Circling not authorized CAT E SE of Rwy 3-21 and NE of Rwy 12-30.
 CAUTION: 5389' obst 750' left of rwy centerline abeam Rwy 8 thld. Mountains rising to 10,000' 7 NM E of field.



EMERG SAFE ALT 100 NM 15,400	ELEV 5355	TDZE 5320
------------------------------	-----------	-----------



CATEGORY	C	D	E
S-ILS 8 *	5529/24	209 (300-1/2)	
S-LOC 8 **	5740/40	420 (500-3/4)	
*** CIRCLING	5920-1 1/2 (600-1 1/2)	6460-3	1105 (1200-3)

ALBUQUERQUE, NEW MEXICO 35°02'N-106°36'W ALBUQUERQUE INTL SUNPORT (KIRTLAND AFB) (KABQ)
 Amdt 2A 21APR22

HI-ILS or LOC RWY 8

SW-1, 15 MAY 2025 to 12 JUN 2025

SW-1, 15 MAY 2025 to 12 JUN 2025