


NDB BMW 404	APP CRS 312°	Rwy Idg TDZE Apt Elev	4600 922 934
-----------------------	------------------------	-----------------------------	---

NDB RWY 31

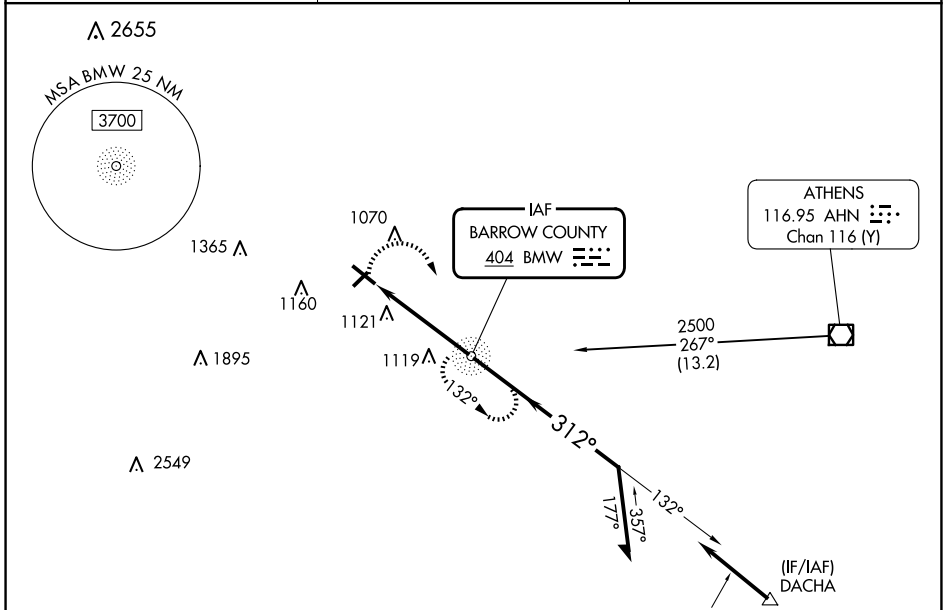
BARROW COUNTY (WDR)

⚠ For inop ALS, increase S-31 Cat A/B visibility to 1 SM. Circling Rwy 13, 23 NA at night. Rwy 31 helicopter visibility reduction below $\frac{3}{4}$ SM NA.

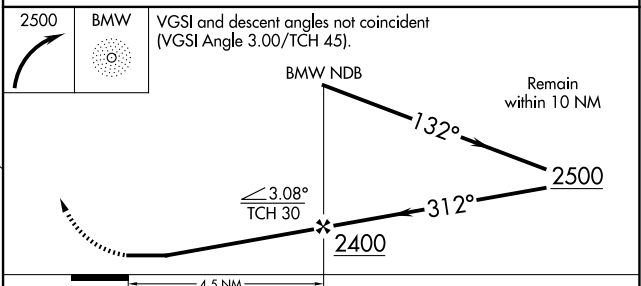
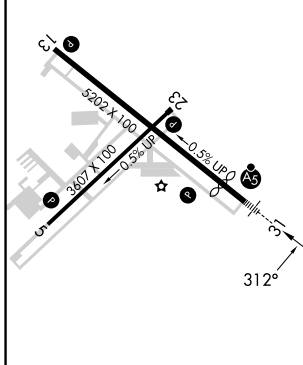
MALSR 

MISSED APPROACH: Climbing right turn to 2500 direct BMW NDB and hold.

AWOS-3 118.575	ATLANTA APP CON ★ 132.475 291.1	UNICOM 123.0 (CTAF) 0
--------------------------	---	---------------------------------



ELEV 934	D	TDZE 922
----------	----------	----------



	FAF to MAP 4.5 NM			
	HIRL Rwy 13-31 0			
	MIRL Rwy 5-23 0			
	CATEGORY			
	A	B	C	D
S-31	1480- $\frac{3}{4}$	558 (600- $\frac{3}{4}$)	1480- $\frac{1}{8}$	558 (600- $\frac{1}{8}$)
CIRCLING	1480-1 546 (600-1)	1580-1 646 (700-1)	1660-2 726 (800-2)	1660- $\frac{2}{4}$ 726 (800- $\frac{2}{4}$)

SE-4, 15 MAY 2025 to 12 JUN 2025

SE-4, 15 MAY 2025 to 12 JUN 2025