

VOR/DME OTK <b>114.8</b> Chan <b>95</b>	APP CRS <b>338°</b>	Rwy Idg <b>8002</b> TDZE <b>200</b> Apt Elev <b>203</b>
-----------------------------------------------	------------------------	---------------------------------------------------------------

# VOR RWY 35

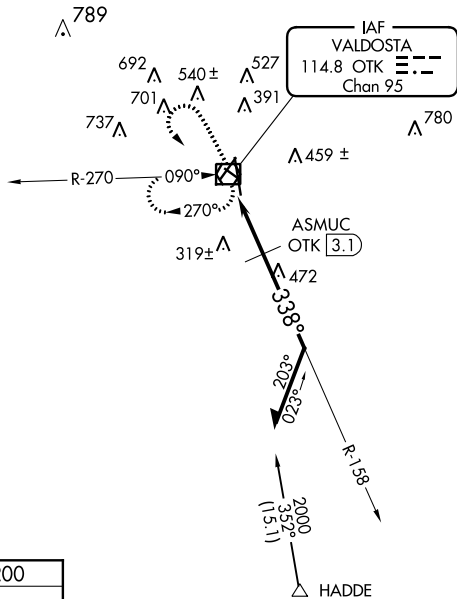
VALDOSTA RGNL (VLD)

For inoperative MALSR, increase S-35 Cats A/B visibility to 1 mile. ASMUC fix minimums: increase S-35 Cats A/B/C visibility to 1 mile and Cat D to 1 1/4 mile. Visibility reduction by helicopters NA. VDP NA with Moultrie altimeter setting. If local altimeter setting not received, use Moultrie altimeter setting and increase all MDAs 100 feet and visibility Cats C and D 1/2 mile.

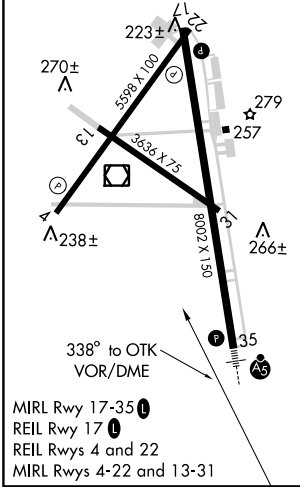
**MALSR**

**MISSED APPROACH:** Climb to 1200 then climbing left turn to 2000 direct OTK VOR/DME and hold, continue climb-in-hold to 2000.

ASOS <b>126.225</b>	VALDOSTA APP CON * <b>126.6 285.6</b>	VALDOSTA TOWER * <b>120.9 (CTAF) 0</b>	GND CON <b>121.7</b>	UNICOM <b>122.95</b>
------------------------	------------------------------------------	-------------------------------------------	-------------------------	-------------------------



ELEV 203	TDZE 200
----------	----------



1200	2000	OTK	OTK VOR/DME	Remain within 10 NM
			158° 338° 1800 780* 0.8 NM, 1.3 NM	
* 880 when using Moultrie altimeter setting.				

CATEGORY	A	B	C	D
S-35	780-3/4	580 (600-3/4)	780-1 580 (600-1)	780-1 1/4 580 (600-1 1/4)
CIRCLING	780-1	577 (600-1)	780-1 1/2 577 (600-1 1/2)	780-2 577 (600-2)
ASMUC FIX MINIMUMS				
S-35	580-3/4 380 (400-3/4)		580-1 380 (400-1)	
CIRCLING	640-1 437 (500-1)	660-1 457 (500-1)	660-1 1/2 457 (500-1 1/2)	780-2 577 (600-2)

SE-4, 12 OCT 2017 to 09 NOV 2017

SE-4, 12 OCT 2017 to 09 NOV 2017