

VOR/DME OTK 114.8 Chan 95	APP CRS 190°	Rwy Idg 8002 TDZE 198 Apt Elev 203
---	------------------------	---

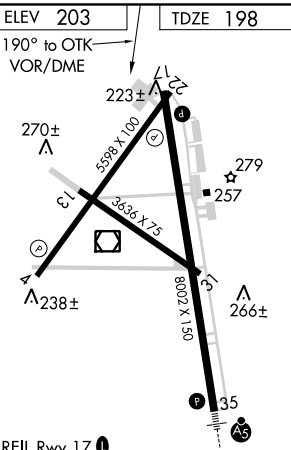
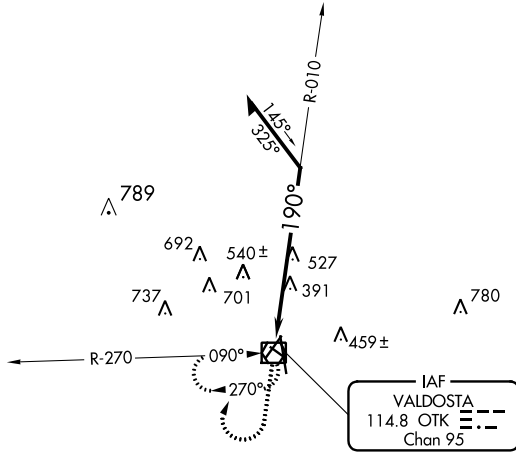
VOR RWY 17

VALDOSTA RGNL (VLD)

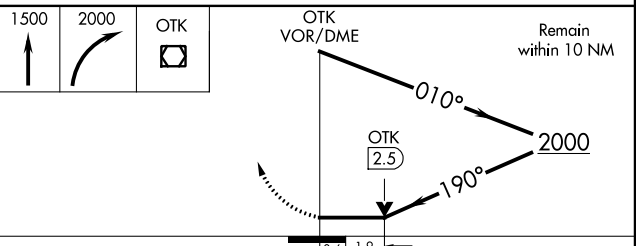
▼ Visibility reduction by helicopters NA.
 ▼ VDP NA when using Moultrie altimeter setting.
 ▲ If local altimeter setting not received, use Moultrie altimeter setting and increase all MDAs 100 feet.

MISSED APPROACH: Climb to 1500 then climbing right turn to 2000 direct OTK VOR/DME and hold, continue climb-in-hold to 2000.

ASOS 126.225	VALDOSTA APP CON * 126.6 285.6	VALDOSTA TOWER * 120.9 (CTAF) 0	GND CON 121.7	UNICOM 122.95
------------------------	--	---	-------------------------	-------------------------



REIL Rwy 17 **1**
 MIRL Rwy 17-35 **1**
 REIL Rwy 4 and 22
 MIRL Rwy 4-22 and 13-31



CATEGORY	A	B	C	D
S-17	840-1 642 (700-1)		840-1 ³ / ₄ 642 (700-1 ³ / ₄)	840-2 642 (700-2)
CIRCLING	840-1 637 (700-1)		840-1 ³ / ₄ 637 (700-1 ³ / ₄)	840-2 637 (700-2)

SE-4, 17 AUG 2017 to 14 SEP 2017

SE-4, 17 AUG 2017 to 14 SEP 2017