

WAAS CH <b>86206</b> <b>W35A</b>	APP CRS <b>356°</b>	Rwy Idg TDZE Apt Elev	<b>8002</b> <b>200</b> <b>203</b>
--	------------------------	-----------------------------	---

# RNAV (GPS) RWY 35

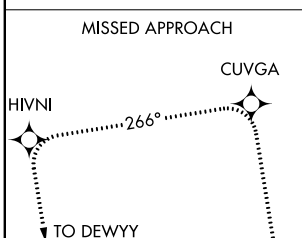
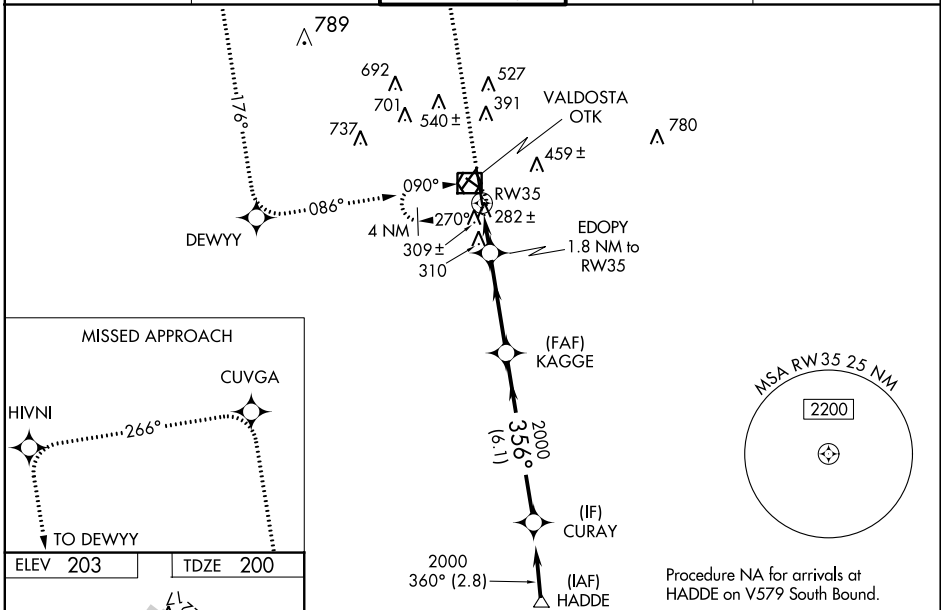
VALDOSTA RGNL (VLD)

▼ Baro-VNAV NA when using Moultrie altimeter setting. For uncompensated Baro-VNAV systems, LNAV/VNAV NA below -15°C (5°F) or above 48°C (118°F). DME/DME RNP-0.3 NA.  
 ▲ Visibility reduction by helicopters NA. When local altimeter setting not received, use Moultrie altimeter setting and increase all DA 88 feet and all MDA 100 feet and increase LNAV/VNAV all Cats and Circling Cat D visibility ¼ mile. For inoperative MALSRL, increase LPV all Cats visibility to 1 mile, increase LNAV Cats A, B, and C visibility to 1 mile, and increase LNAV Cat D visibility to 1 ½ mile. For inoperative MALSRL when using Moultrie altimeter setting, increase LNAV Cats A and B visibility to 1 mile. VDP NA when using Moultrie altimeter setting. Circling to Rwy 4, 13, and 31 NA at night.

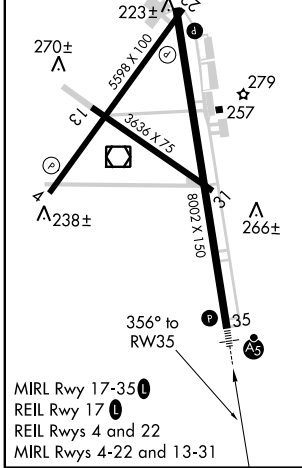
MISSED APPROACH: Climb to 2200 direct CUVGA and left turn on track 266° to HIVNI and left turn on track 176° to DEWY left turn on track 086° to OTK VOR/DME and hold.



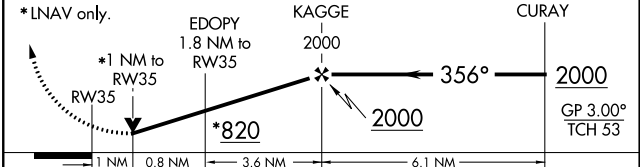
ASOS <b>126.225</b>	VALDOSTA APP CON * <b>126.6 285.6</b>	VALDOSTA TOWER * <b>120.9 (CTAF) 0</b>	GND CON <b>121.7</b>	UNICOM <b>122.95</b>
------------------------	--	---	-------------------------	-------------------------



ELEV 203	TDZE 200
----------	----------



2200 CUVGA	HIVNI	DEWY	OTK	Procedure Turn NA
------------	-------	------	-----	-------------------



CATEGORY	A	B	C	D
LPV DA	489-¾ 289 (300-¾)			
LNAV/ VNAV DA	609-1 409 (500-1)			
LNAV MDA	560-¾ 360 (400-¾)			560-1 360 (400-1)
CIRCLING	640-1 437 (500-1)	660-1 457 (500-1)	660-1½ 457 (500-1½)	780-2 577 (600-2)