

APP CRS 041°	Rwy Idg 5598 TDZE 202 Apt Elev 203
------------------------	---

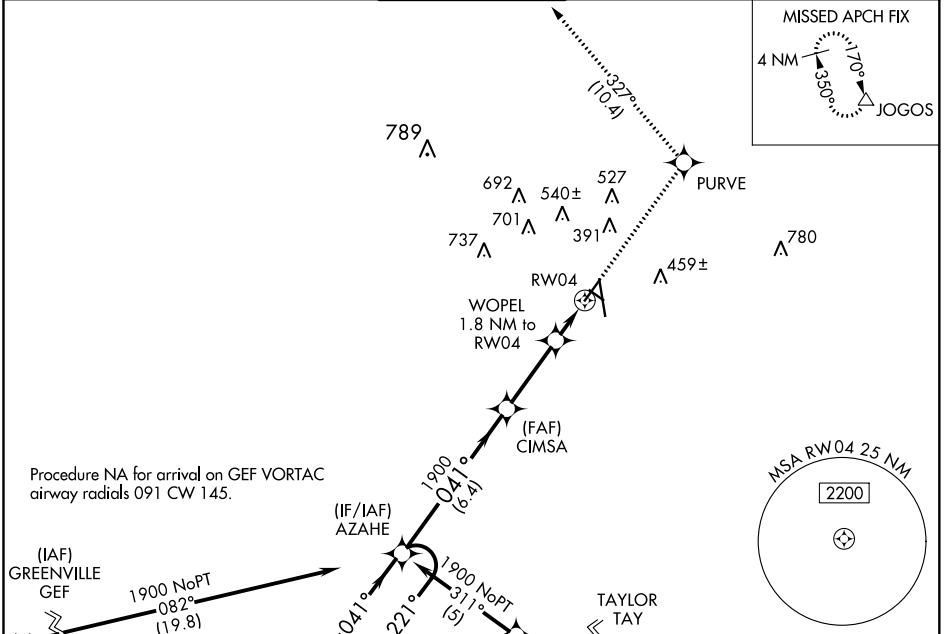
RNAV (GPS) RWY 4

VALDOSTA RGNL (VLD)

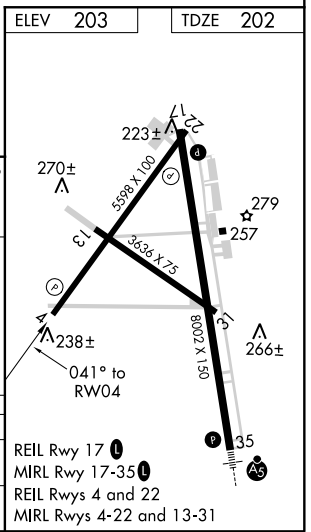
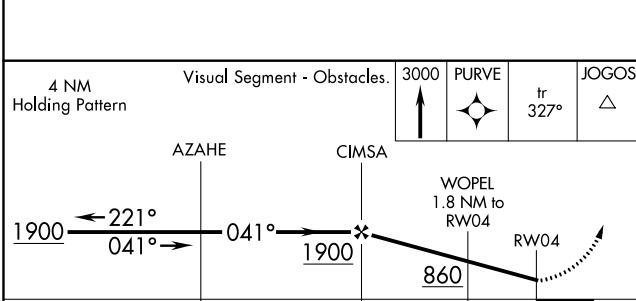
▽ Rwy 4 helicopter visibility reduction below 1 SM NA. DME/DME RNP-0.3 NA.
▲ When local altimeter setting not received, use Moultrie altimeter setting and increase all MDA 100 feet and LNAV Cat C and D visibility $\frac{3}{8}$ SM, Circling Cat D $\frac{1}{4}$ SM. Straight-in Rwy 4 NA at night, Circling Rwy 4, 13, 31 NA at night.

MISSED APPROACH: Climb to 3000 direct PURVE and on track 327° to JOGOS and hold.

ASOS 126.225	VALDOSTA APP CON * 126.6 285.6	VALDOSTA TOWER * 120.9 (CTAF)	GND CON 121.7	UNICOM 122.95
------------------------	--	---	-------------------------	-------------------------



ELEV	203	TDZE	202
------	-----	------	-----



CATEGORY	A	B	C	D
LNAV MDA	560-1 358 (400-1)			
CIRCLING	640-1 437 (500-1)	660-1 457 (500-1)	660-1½ 457 (500-1½)	780-2 577 (600-2)

REIL Rwy 17 **1**
 MIRL Rwy 17-35 **1**
 REIL Rws 4 and 22
 MIRL Rws 4-22 and 13-31

SE-4, 21 JUN 2018 to 19 JUL 2018

SE-4, 21 JUN 2018 to 19 JUL 2018