


LOC I-VLD 110.9	APP CRS 356°	Rwy Idg 8002 TDZE 200 Apt Elev 203
---------------------------	------------------------	---

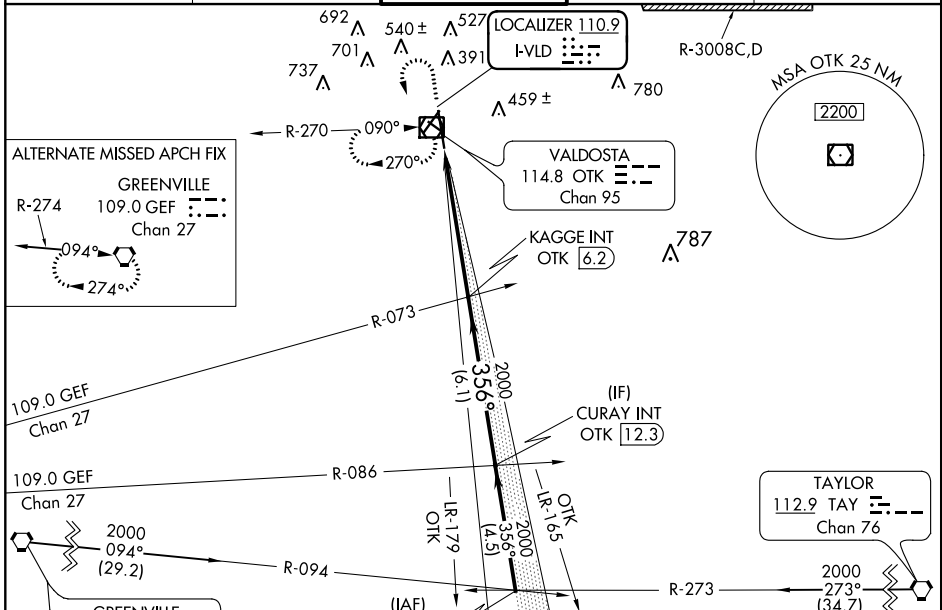
ILS or LOC RWY 35

VALDOSTA RGNL (VLD)

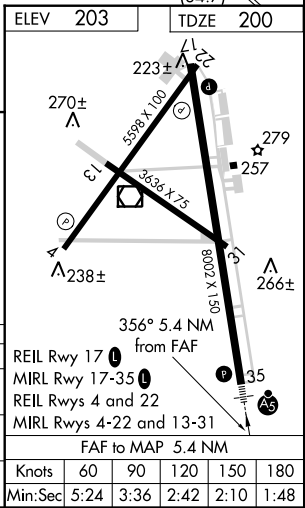
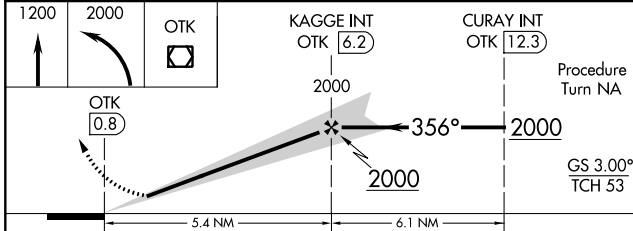
⚠ For inoperative MALSRS, increase S-ILS 35 all Cats visibility to 1 mile and S-LOC 35 Cats A, B visibility to 1 mile, Cat E visibility to 1½ mile. Visibility reduction by helicopters NA. When local altimeter setting not received, use Moultrie altimeter setting and increase all DA 88 feet and all MDA 100 feet and increase S-LOC 35 Cats C and D visibility ¼ mile and Cat E visibility ½ mile. DME from OTK VOR/DME. For inoperative MALSRS, when using Moultrie altimeter setting, increase S-ILS 35 Cat E visibility to 1½ mile and increase S-LOC 35 Cats A and B visibility to 1 mile, Cat E to 2 miles. Circling to Rwy 4, 13, and 31 NA at night.

MALSRS

MISSED APPROACH:
 Climb to 1200 then climbing left turn to 2000 direct OTK VOR/DME and hold, continue climb-in-hold to 2000.

ASOS 126.225	VALDOSTA APP CON * 126.6 285.6	VALDOSTA TOWER * 120.9 (CTAF)	GND CON 121.7	UNICOM 122.95
------------------------	--	---	-------------------------	-------------------------



ELEV 203	TDZE 200
----------	----------



CATEGORY	A	B	C	D	E
S-ILS 35	489-¾ 289 (300-¾)				
S-LOC 35	660-¾ 460 (500-¾)		660-1 460 (500-1)		
CIRCLING	660-1 457 (500-1)	660-1½ 457 (500-1½)		780-2 577 (600-2)	1040-3 837 (900-3)

REIL Rwy 17	1	from FAF			
MIRL Rwy 17-35	1				
REIL Rwys 4 and 22					
MIRL Rwys 4-22 and 13-31					
FAF to MAP 5.4 NM					
Knots	60	90	120	150	180
Min:Sec	5:24	3:36	2:42	2:10	1:48

SE-4, 21 JUN 2018 to 19 JUL 2018

SE-4, 21 JUN 2018 to 19 JUL 2018