

WAAS CH <b>56640</b> <b>W04A</b>	APP CRS <b>045°</b>	Rwy Idg TDZE <b>242</b> Apt Elev <b>264</b>
--	------------------------	---

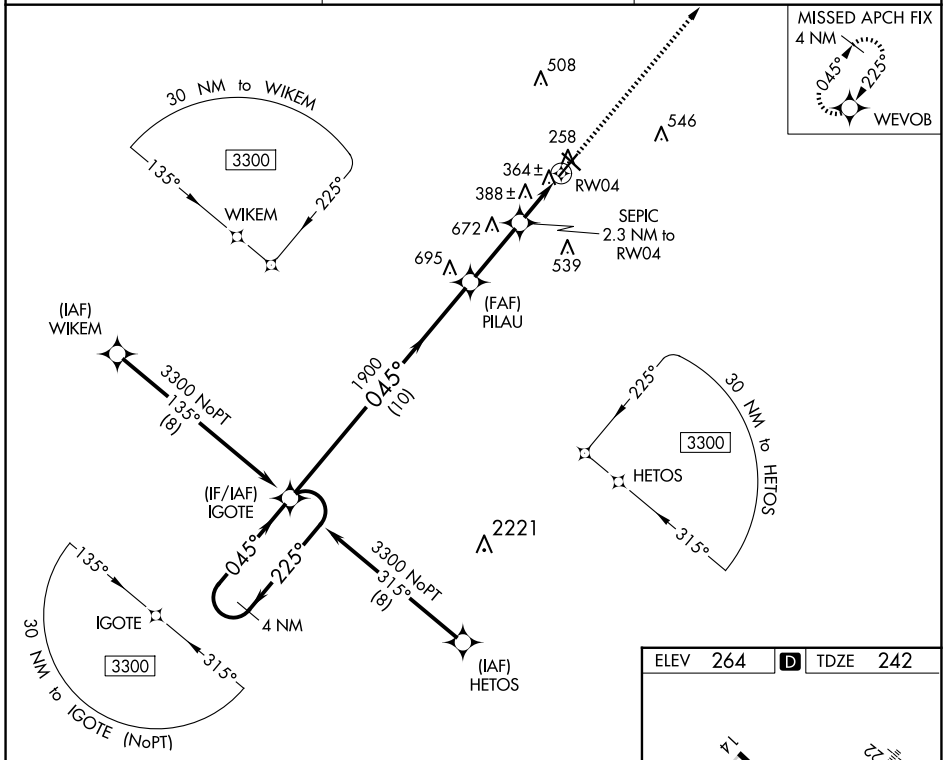
# RNAV (GPS) RWY 4

THOMASVILLE RGNL (TVI)

**⚠** Rwy 4 helicopter visibility reduction below 1 SM NA. DME/DME RNP-0.3 NA. Straight-in Rwy 4 NA at night, Circling Rwy 4 NA at night. When local altimeter setting not received, use Valdosta altimeter setting: increase all MDAs 100 feet and all Cat C and D visibilities 3/8 SM.

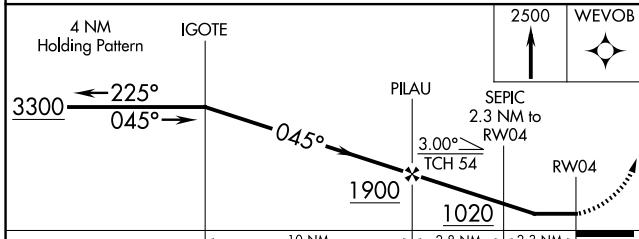
**MISSED APPROACH:** Climb to 2500 direct WEVOB and hold.

AWOS-3PT <b>119.175</b>	VALDOSTA APP CON ★ <b>126.6 285.6</b>	UNICOM <b>123.075 (CTAF) 0</b>
----------------------------	--	-----------------------------------

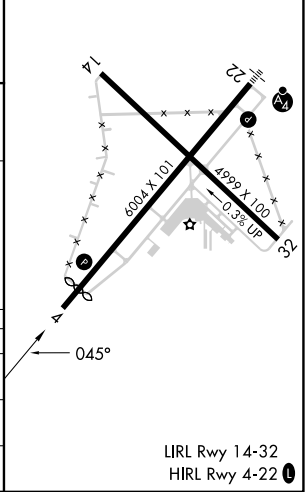


SE-4, 15 MAY 2025 to 12 JUN 2025

SE-4, 15 MAY 2025 to 12 JUN 2025



ELEV 264	<b>D</b> TDZE 242
----------	-------------------



CATEGORY	A	B	C	D
LP MDA	620-1 378 (400-1)			
LNAV MDA	640-1 398 (400-1)	640-1 3/8 398 (400-1 1/8)		
<b>C</b> CIRCLING	700-1 436 (500-1)	800-1 536 (600-1)	900-1 3/4 636 (700-1 3/4)	1040-2 1/2 776 (800-2 1/2)

LIRL Rwy 14-32  
HIRL Rwy 4-22