

TROY, ALABAMA

AL-5720 (FAA)

24137

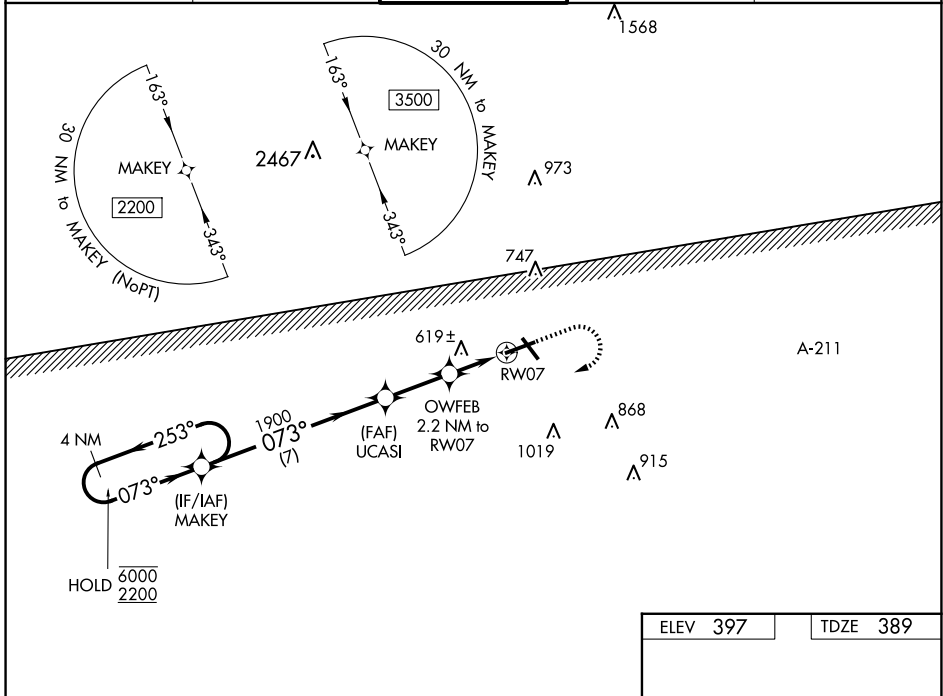
WAAS CH 82006 W07A	APP CRS 073°	Rwy Idg TDZE Apt Elev	6197 389 397
--	------------------------	-----------------------------	---

RNAV (GPS) RWY 7

TROY MUNI AT N KENNETH CAMPBELL FLD (TOI)

RNP APCH.		MISSED APPROACH: Climb to 1300 then climbing right turn to 2200 direct MAKEY and hold.		
		Circling Rwy 14, 32 NA at night. For uncompensated Baro-VNAV systems, LNAV/VNAV NA below -7°C or above 54°C.		

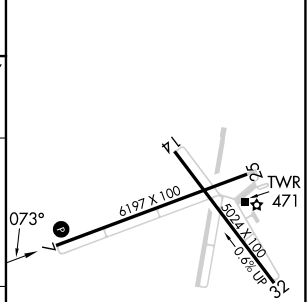
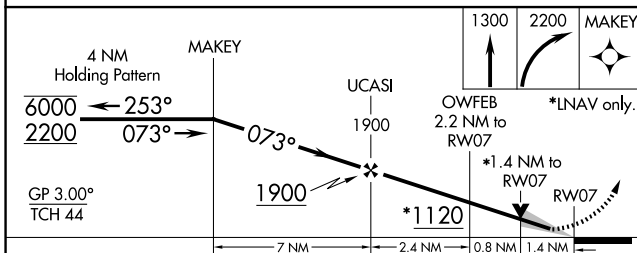
ATIS 120.925	CAIRNS APP CON★ 121.1 319.25	TROY TOWER★ 124.3 (CTAF) 0 306.9	GND CON 121.9 294.7	UNICOM 122.8
------------------------	--	--	-------------------------------	------------------------



SE-4, 07 AUG 2025 to 04 SEP 2025

SE-4, 07 AUG 2025 to 04 SEP 2025

ELEV 397	TDZE 389
----------	----------



CATEGORY	A	B	C	D
LPV DA		637-7/8	248 (300-7/8)	
LNAV/VNAV DA		702-1 1/8	313 (400-1 1/8)	
LNAV MDA	880-1	491 (500-1)	880-1 3/8	491 (500-1 3/8)
CIRCLING	1000-1	603 (700-1)	1300-2 3/4 903 (1000-2 3/4)	1380-3 983 (1000-3)

MIRL Rwy 7-25 and 14-32

TROY, ALABAMA
Amdt 3A 21MAY20

TROY MUNI AT N KENNETH CAMPBELL FLD (TOI)
31°52'N-86°01'W

RNAV (GPS) RWY 7