

RNAV (RNP) Y RWY 28

SAVANNAH/HILTON HEAD INTL (SAV)

APP CRS	Rwy Idg	9351
277°	TDZE	50
	Apt Elev	50

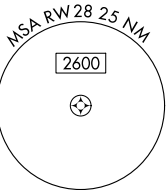
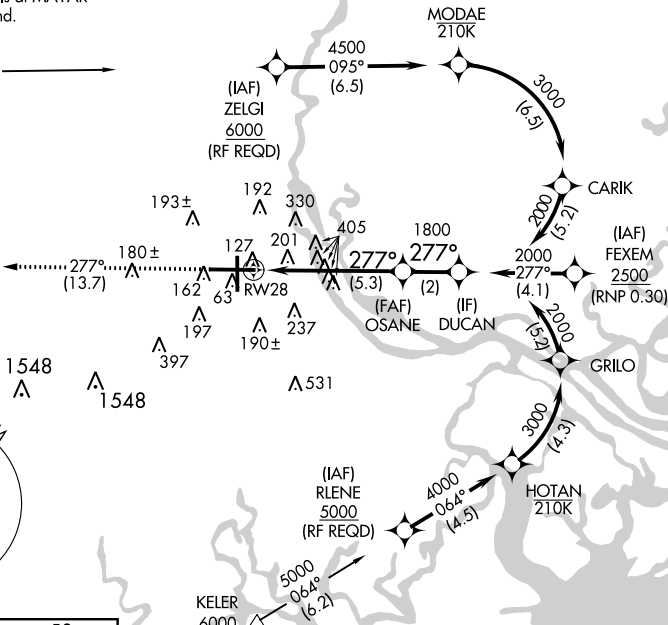
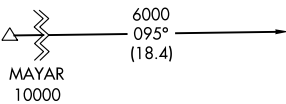
RNP AR APCH. At KELER, and MAYAR: (RNP 1.0). At ZELGI, FEXEM, and RLENE: (RNP 0.30).

⚠ For uncompensated Baro-VNAV systems, procedure NA below -1.5°C or above 54°C.
⚠ When local altimeter setting not received, procedure NA.

MISSED APPROACH: Climb to 2500 on track 277° to HANGI and hold.

ATIS 123.75	SAVANNAH APP CON* 125.3 371.875	SAVANNAH TOWER* 119.1 (CTAF) 257.8	GND CON 121.9 348.6	CLNC DEL 119.55 291.775	UNICOM 122.95
-----------------------	---	--	-------------------------------	-----------------------------------	-------------------------

Procedure NA for arrivals at MAYAR on V154 northwest bound.

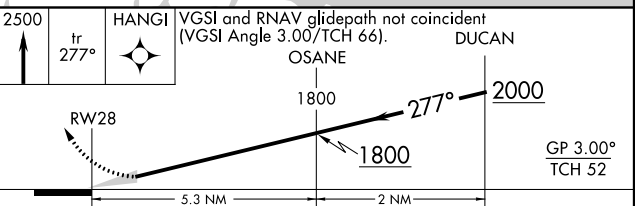
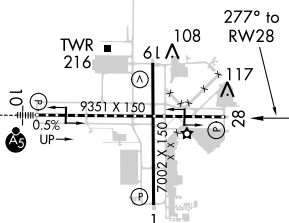


SE-4, 19 JUL 2018 to 16 AUG 2018

SE-4, 19 JUL 2018 to 16 AUG 2018

ELEV 50	D	TDZE 50
---------	----------	---------

Procedure NA for arrivals at KELER on V437-441 southbound.



CATEGORY	A	B	C	D
RNP 0.15 DA		404-1	354 (400-1)	
RNP 0.30 DA		471-1¼	421 (500-1¼)	

TDZ/CL Rwy 10
 REIL Rwy 19 and 28
 HIRL Rwy 1-19 and 10-28

AUTHORIZATION REQUIRED