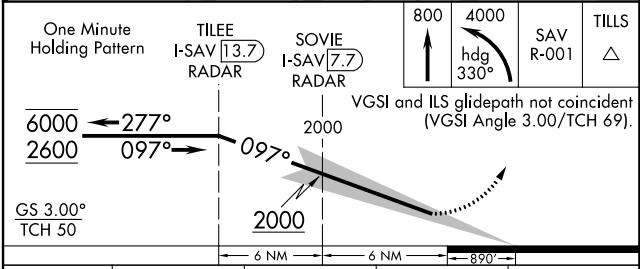
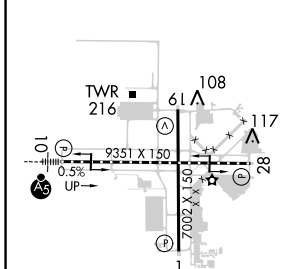
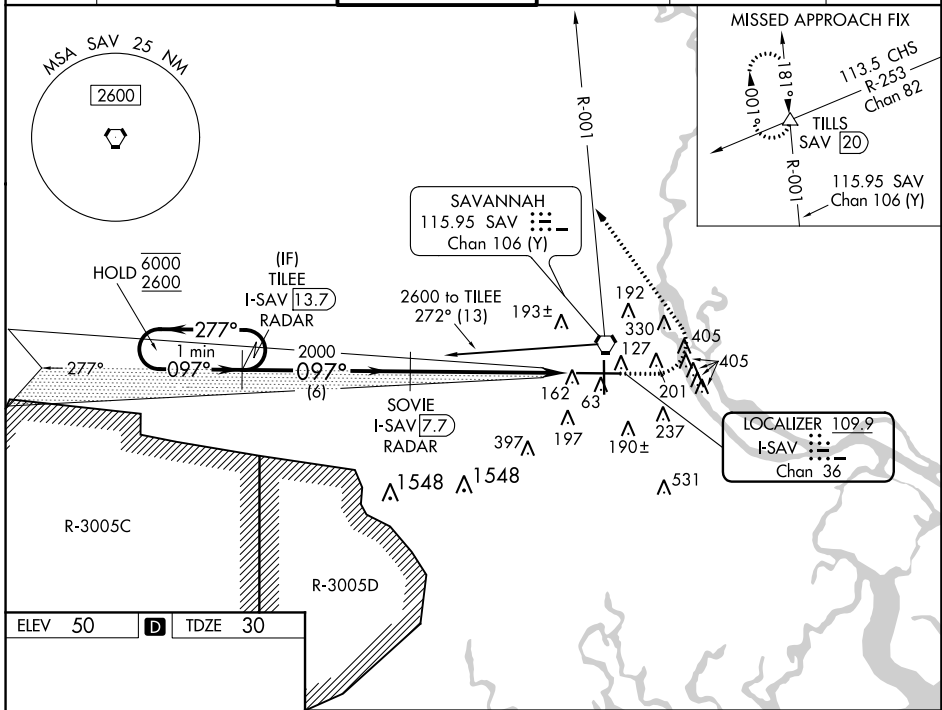


LOC I-SAV 109.9 Chan 36	APP CRS 097°	Rwy Idg 9351 TDZE 30 Apt Elev 50
---	------------------------	---

ILS RWY 10 (SA CAT I & II)
SAVANNAH/HILTON HEAD INTL (SAV)

DME required.	MALSR	MISSED APPROACH: Climb to 800 then climbing left turn to 4000 on heading 330° and SAV VORTAC R-001 to TILLS INT/SAV 20 DME and hold.
<p>▼ SA CAT I: Requires specific OPSPEC, MSPEC, or LOA approval and use of HUD to DH. SA CAT II: Reduced lighting: Requires specific OPSPEC, MSPEC, or LOA approval and use of autoland or HUD to touchdown. Procedure NA when tower closed.</p>		

ATIS 123.75	SAVANNAH APP CON* 125.3 371.875	SAVANNAH TOWER* 119.1(CTAF) 257.8	GND CON 121.9 348.6	CLNC DEL 119.55 291.775	UNICOM 122.95
-----------------------	---	---	-------------------------------	-----------------------------------	-------------------------



CATEGORY	A	B	C	D
S-ILS 10	SA CAT I	RA 162/14	150 DA 180	
S-ILS 10	SA CAT II	RA 116/12	100 DA 130	

SA CATEGORY I & II ILS - SPECIAL AIRCREW & AIRCRAFT CERTIFICATION REQUIRED

SE-4, 08 NOV 2018 to 06 DEC 2018

SE-4, 08 NOV 2018 to 06 DEC 2018