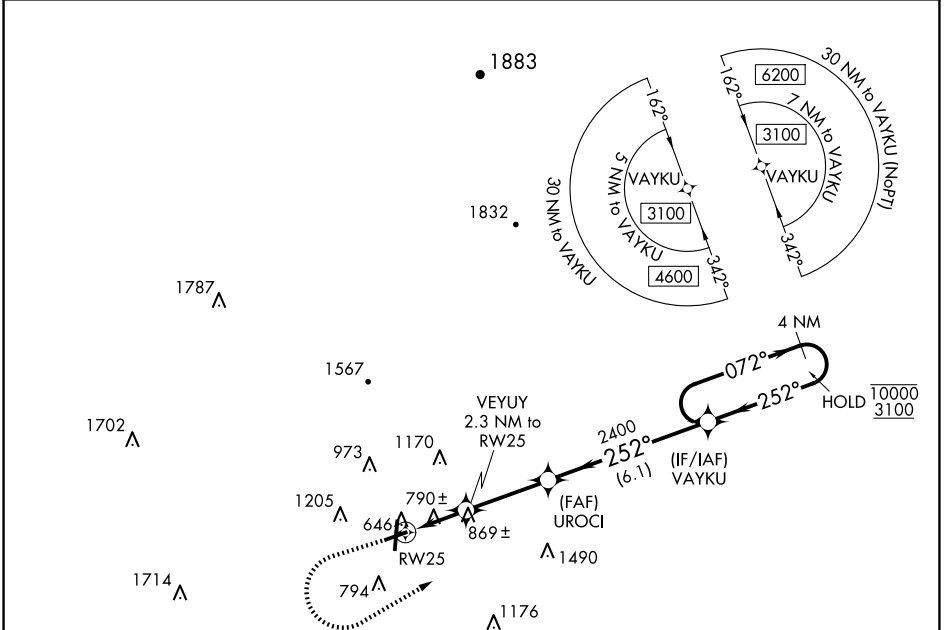


WAAS CH <b>56542</b> <b>W25A</b>	APP CRS <b>252°</b>	Rwy Idg TDZE Apt Elev	<b>4495</b> <b>638</b> <b>644</b>
--	------------------------	-----------------------------	---

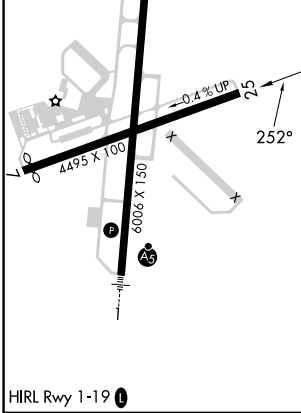
# RNAV (GPS) RWY 25

RICHARD B RUSSELL RGNL - J H TOWERS FLD (RMG)

RNP APCH - GPS.		MISSED APPROACH: Climb to 1100 then climbing left turn to 3100 direct VAYKU and hold.	
<p><b>▽</b> Rwy 25 helicopter visibility reduction below 3/4 SM NA.  <b>▲</b> Straight-in minimums NA at night.                  Circling NA northwest of Rwy 7 and 19.</p>		ASOS <b>119.925</b>	ATLANTA CENTER <b>124.5 270.325</b>
		GCO <b>121.725</b>	UNICOM <b>122.725 (CTAF)</b>



ELEV <b>644</b>	<b>D</b>	TDZE <b>638</b>
-----------------	----------	-----------------



1100	3100	VAYKU	4 NM Holding Pattern
↑	↶	✧	
VEYUY 2.3 NM to RW25		UROCI	VAYKU 4 NM Holding Pattern
1.2 NM to RW25		3.00° TCH 45	072° → 10000
1400		2400	← 252° 3100
1.2 1.1 NM		3.1 NM	6.1 NM
CATEGORY	A	B	C D
LP MDA	1040-1	402 (400-1)	1040-1½ 402 (400-1½)
LNAV MDA	1120-1	482 (500-1)	1120-1½ 482 (500-1½)
<b>C</b> CIRCLING	1140-1 496 (500-1)	1200-1 556 (600-1)	1480-2½ 836 (900-2½) 1840-3 1196 (1200-3)

SE-4, 15 MAY 2025 to 12 JUN 2025

SE-4, 15 MAY 2025 to 12 JUN 2025