

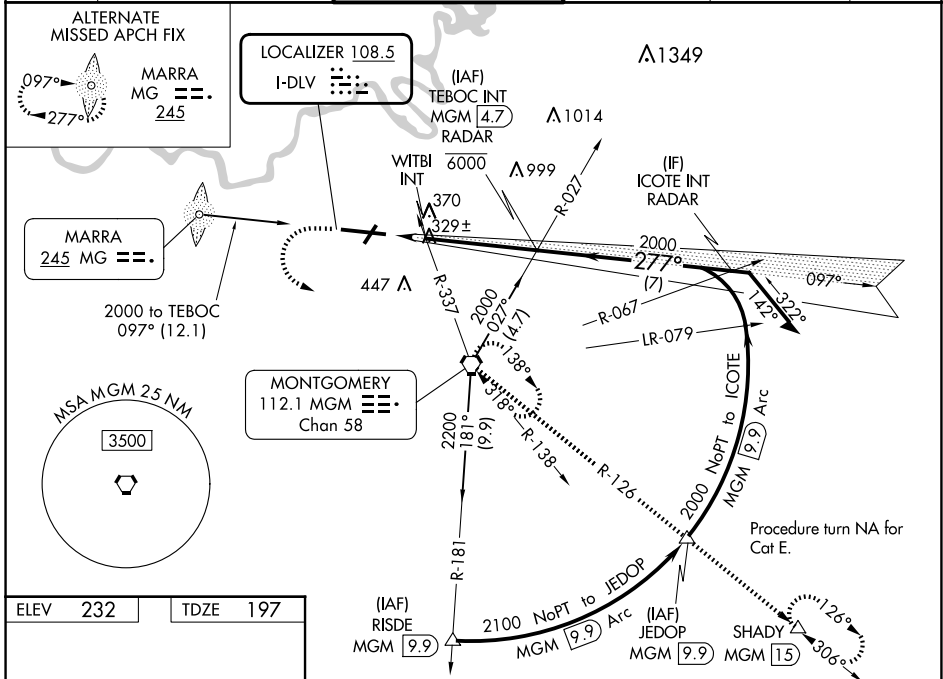
LOC I-DLV	APP CRS	Rwy Idg	<b>9020</b>
<b>108.5</b>	<b>277°</b>	TDZE	<b>197</b>
		Apt Elev	<b>232</b>

# ILS Y or LOC RWY 28

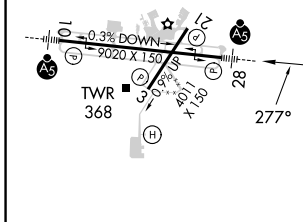
MONTGOMERY RGNL (DANNELLY FLD) (MGM)

	For inop ALS, increase S-ILS 28 Cat E visibility to 3/4 SM; S-LOC 28 Cat C/D/E visibility to 1 3/8 SM and increase WITBI fix minimums S-LOC 28 Cat E visibility to 1 1/2 SM. Circling for Cat E NA north of Rwy 10-28.	MALSR 	MISSED APPROACH: Climb to 700 then climbing left turn to 3000 direct MGM VORTAC and hold, continue climb-in-hold to 3000 (TACAN aircraft continue climb to 3500 on MGM VORTAC R-126 to SHADY/MGM 15 DME and hold SE, RT, 306° inbound).

ATIS	MONTGOMERY APP CON *	DANNELLY TOWER *	GND CON	CLNC DEL	UNICOM
<b>120.675</b>	<b>124.0 363.025</b>	<b>119.7 (CTAF) 0 360.85</b>	<b>121.7 348.6</b>	<b>118.3 270.3</b>	<b>122.95</b>



ELEV 232	TDZE 197
----------	----------



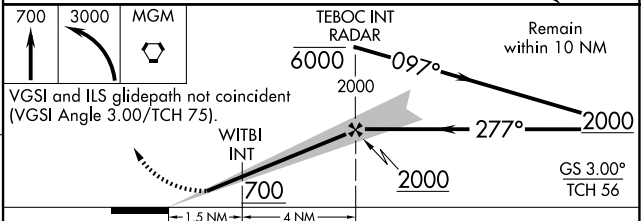
REIL Rwy 3

MIRL Rwy 3-21

HIRL Rwy 10-28

FAF to MAP 5.5 NM

Knots	60	90	120	150	180
Min:Sec	5:30	3:40	2:45	2:12	1:50



CATEGORY	A	B	C	D	E
S-ILS 28	397-1/2		200 (200-1/2)		
S-LOC 28	700-1/2	503 (500-1/2)	700-1		503 (500-1)
CIRCLING	700-1	468 (500-1)	800-1/2	860-2	860-2 1/4
			568 (600-1 1/2)	628 (700-2)	628 (700-2 1/4)
WITBI FIX MINIMUMS (DUAL VOR RECEIVERS REQUIRED)					
S-LOC 28	620-1/2	423 (400-1/2)	620-3/4		423 (400-3/4)
CIRCLING	700-1	468 (500-1)	800-1/2	860-2	860-2 1/4
			568 (600-1 1/2)	628 (700-2)	628 (700-2 1/4)

SE-4, 15 MAY 2025 to 12 JUN 2025

SE-4, 15 MAY 2025 to 12 JUN 2025