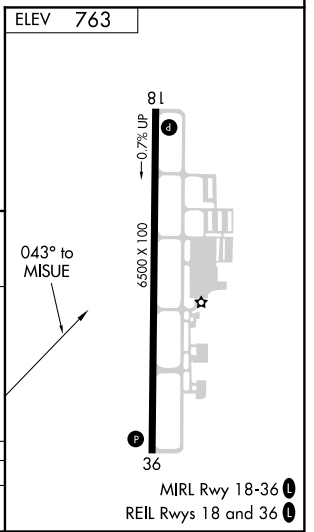
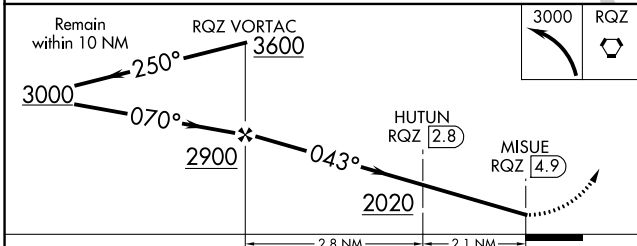
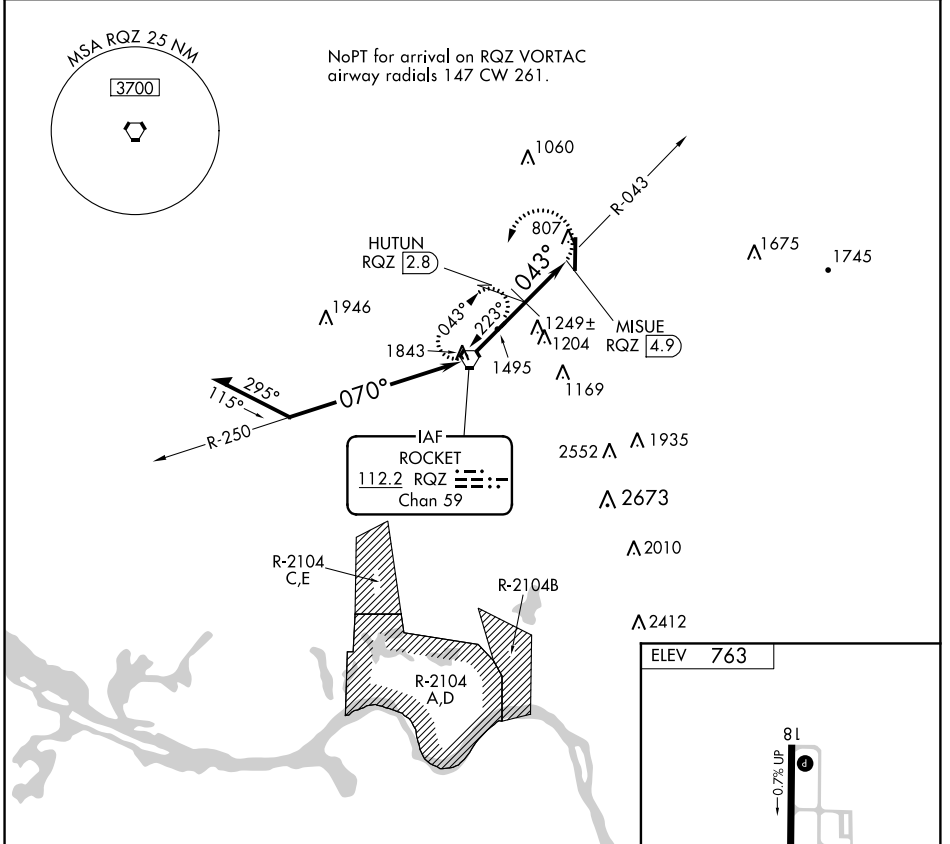


VORTAC RQZ <b>112.2</b> Chan <b>59</b>	APP CRS <b>043°</b>	Rwy Idg TDZE Apt Elev <b>N/A</b> <b>N/A</b> <b>763</b>
--	------------------------	--

HUNTSVILLE EXECUTIVE AIRPORT/TOM SHARP JR FIELD (MDQ) **VOR/DME-B**

**⚠** When local altimeter setting not received, use Huntsville Intl altimeter setting and increase all MDA 60 feet and increase Cat C visibility ¼ mile. **MISSED APPROACH:** Climbing left turn to 3000 direct RQZ VORTAC and hold.

AWOS-3 <b>120.0</b>	HUNTSVILLE APP CON* <b>125.6 354.1</b>	GCO <b>121.725</b>	UNICOM <b>123.0</b> (CTAF) <b>0</b>
------------------------	---	-----------------------	--



CATEGORY	A	B	C	D
<b>C</b> CIRCLING	1500-1	737 (800-1)	1560-2¼ 797 (800-2¼)	2000-3 1237 (1300-3)

SE-4, 17 AUG 2017 to 14 SEP 2017

SE-4, 17 AUG 2017 to 14 SEP 2017