

| | | | |
|--|------------------------|-----------------------------|---|
| WAAS CH 53702 W36A | APP CRS 005° | Rwy Idg TDZE Apt Elev | 6500 763 763 |
|--|------------------------|-----------------------------|---|

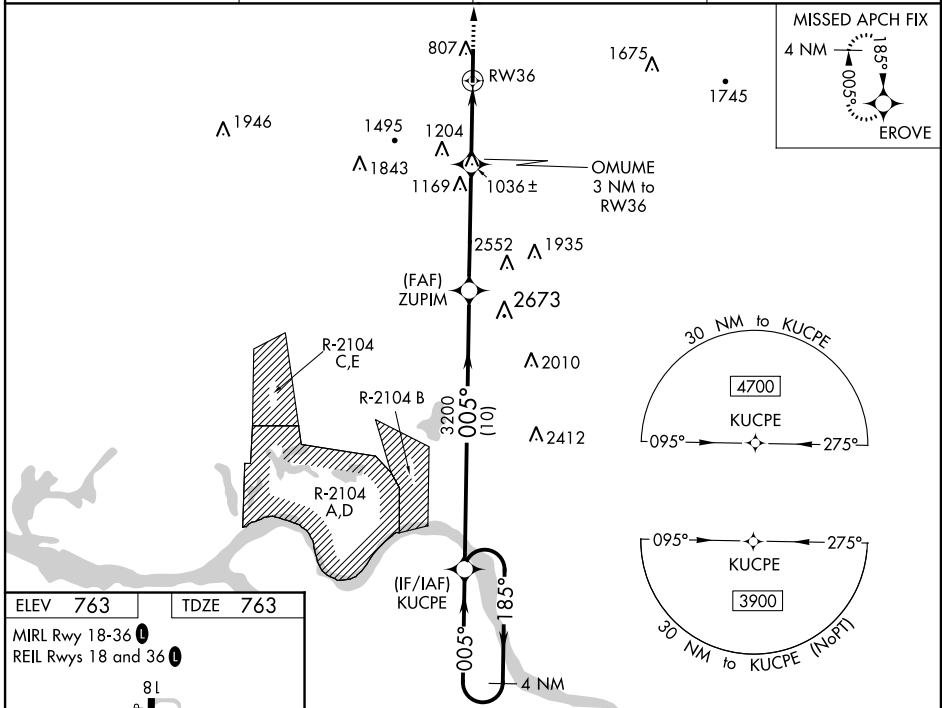
RNAV (GPS) RWY 36

HUNTSVILLE EXECUTIVE AIRPORT/TOM SHARP JR FIELD (MDQ)

Baro-VNAV NA when using Huntsville Intl altimeter setting. For uncompensated Baro-VNAV systems, LNAV/VNAV NA below -16°C (4°F) or above 54°C (130°F). DME/DME RNP-0.3 NA. VDP NA with Huntsville Intl altimeter setting. When local altimeter setting not received, use Huntsville Intl altimeter setting and increase all DA 59 feet and all MDA 60 feet. Increase LPV all Cats visibility 1/8 mile and increase LNAV/VNAV all Cats, LNAV Cats C/D and Circling Cat C visibility 1/4 mile. Helicopter visibility reduction below 3/4 SM NA.

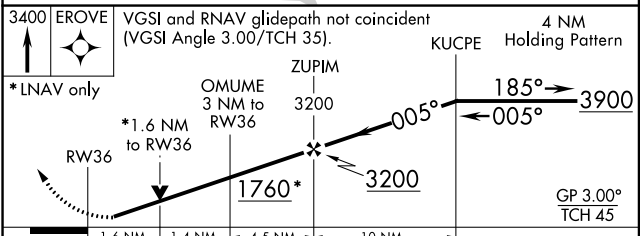
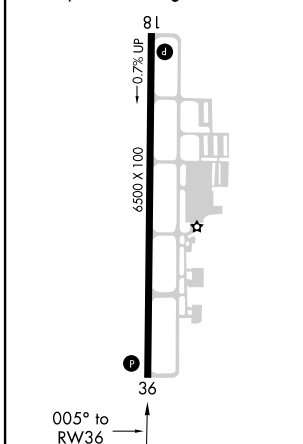
MISSED APPROACH:
Climb to 3400 direct EROVE and hold.

| | | | |
|------------------------|---|-----------------------|---------------------------------|
| AWOS-3 120.0 | HUNTSVILLE APP CON* 125.6 354.1 | GCO 121.725 | UNICOM 123.0 (CTAF) 0 |
|------------------------|---|-----------------------|---------------------------------|



| | |
|----------|----------|
| ELEV 763 | TDZE 763 |
|----------|----------|

MIRL Rwy 18-36
REIL Rwy 18 and 36



| CATEGORY | A | B | C | D |
|--------------|------------|-------------|-----------------|-----------------|
| LPV DA | 963-3/4 | | 200 (200-3/4) | |
| LNAV/VNAV DA | 1249-1 1/8 | | 486 (500-1 1/8) | |
| LNAV MDA | 1300-1 | 537 (600-1) | 1300-1 1/2 | 537 (600-1 1/2) |
| CIRCLING | 1300-1 | 537 (600-1) | 1560-2 1/4 | 2000-3 |
| | | | 797 (800-2 1/4) | 1237 (1300-3) |

SE-4, 27 APR 2017 to 25 MAY 2017

SE-4, 27 APR 2017 to 25 MAY 2017