

WAAS CH 86501 W18A	APP CRS 185°	Rwy Idg TDZE 740 Apt Elev 763	6500
--	------------------------	---	-------------

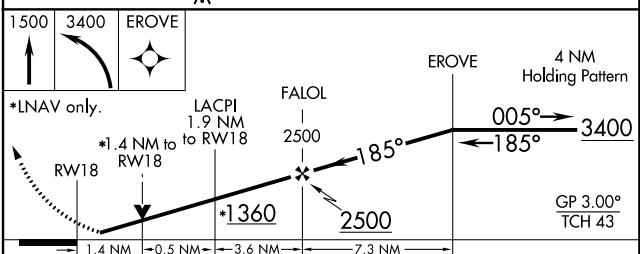
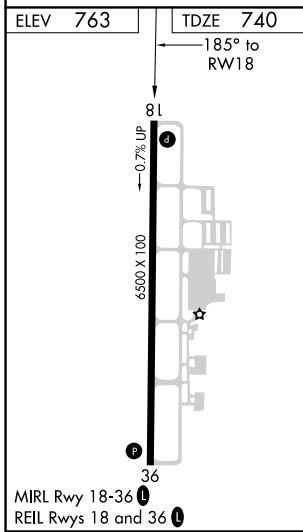
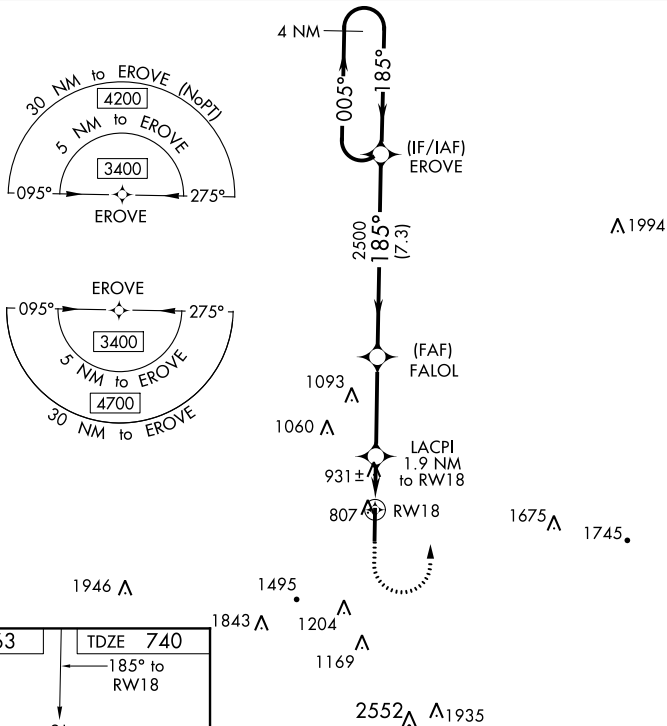
RNAV (GPS) RWY 18

HUNTSVILLE EXECUTIVE AIRPORT/TOM SHARP JR FIELD (MDQ)

Baro-VNAV NA. DME/DME RNP-0.3 NA. VDP NA with Huntsville Intl altimeter setting.
 When local altimeter setting not received, use Huntsville Intl altimeter setting and increase all DA 59 feet and all MDA 60 feet. Increase LPV all Cats visibility 1/8 mile and increase LNAV/VNAV all Cats, LNAV Cats C/D and Circling Cat C visibility 1/4 mile. Helicopter visibility reduction below 3/8 SM NA.

MISSED APPROACH: Climb to 1500 then climbing left turn to 3400 direct EROVE and hold.

AWOS-3PT 120.0	HUNTSVILLE APP CON * 125.6 354.1	GCO 121.725	UNICOM 123.0 (CTAF) 0
--------------------------	--	-----------------------	---------------------------------



CATEGORY	A	B	C	D
LPV DA		940-3/4	200 (200-3/4)	
LNAV/VNAV DA		1250-13/4	510 (500-13/4)	
LNAV MDA	1200-1	460 (500-1)	1200-13/8	460 (500-13/8)
C CIRCLING	1260-1	497 (500-1)	1560-21/4 797 (800-21/4)	2000-3 1237 (1300-3)

SE-4, 01 MAR 2018 to 29 MAR 2018

SE-4, 01 MAR 2018 to 29 MAR 2018