

LOC/DME I-MDQ 109.75 Chan 34 (Y)	APP CRS 185°	Rwy Idg 6500 TDZE 740 Apt Elev 764
---	------------------------	---

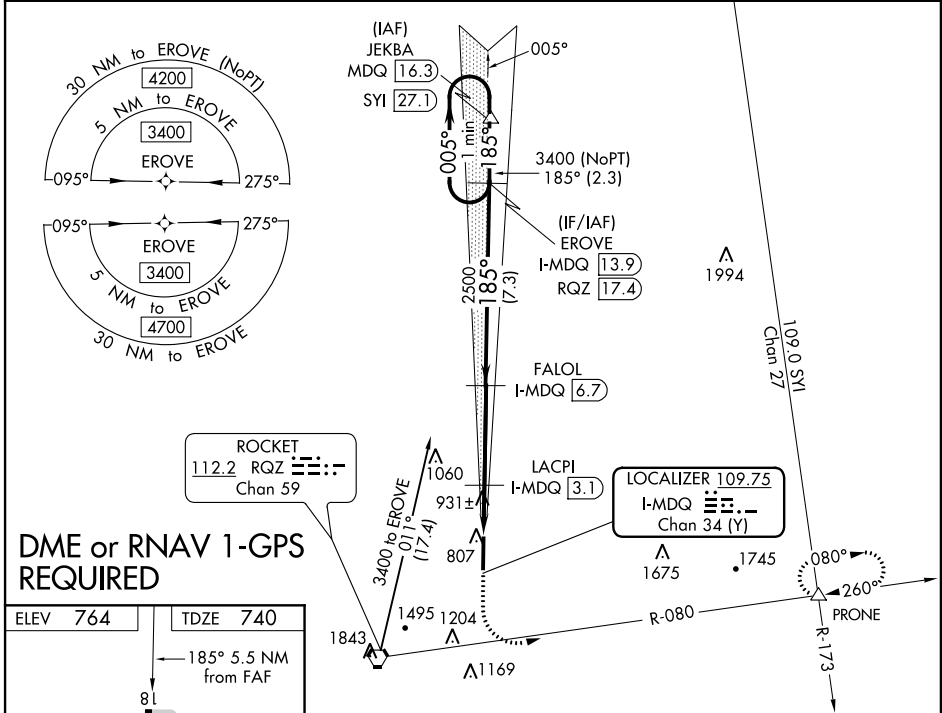
ILS or LOC RWY 18

HUNTSVILLE EXECUTIVE AIRPORT TOM SHARP JR FIELD (MDQ)

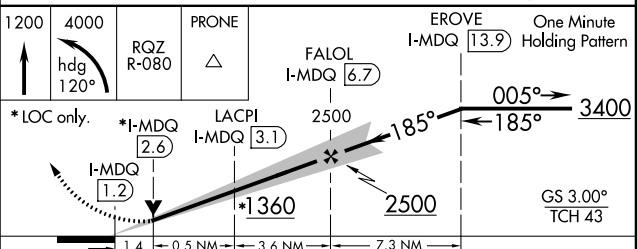
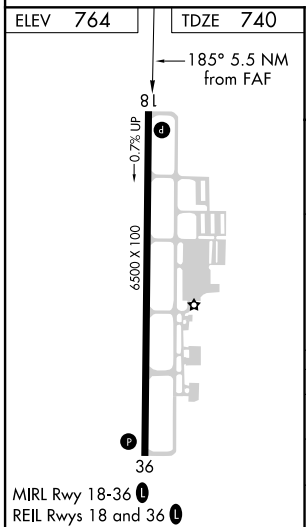
⚠ Rwy 18 helicopter visibility reduction below 3/4 SM NA. DME required. VDP NA with Huntsville Intl-Carl T Jones Field altimeter setting. When local altimeter setting not received, use Huntsville Intl-Carl T Jones Field altimeter setting and increase all DA 59 feet and all MDA 60 feet. Increase S-ILS 18 all Cats visibility 1/8 SM and increase S-LOC 18 Cat C/D visibility 1/8 SM and increase Circling Cat C visibility 1/4 mile.

MISSED APPROACH: Climb to 1200 then climbing left turn to 4000 on heading 120° and RQZ VORTAC R-080 to PRONE INT and hold, continue climb-in-hold to 4000.

AWOS-3PT 120.0	HUNTSVILLE APP CON * 125.6 354.1	GCO 121.725	UNICOM 123.0 (CTAF) 0
--------------------------	--	-----------------------	---------------------------------



DME or RNAV 1-GPS REQUIRED



CATEGORY	A	B	C	D
S-ILS 18	940-3/4 200 (200-3/4)			
S-LOC 18	1200-1	460 (500-1)	1200-1 3/8 460 (500-1 3/8)	
C CIRCLING	1260-1	496 (500-1)	1560-2 1/4 796 (800-2 1/4)	2000-3 1236 (1300-3)

SE-4, 01 MAR 2018 to 29 MAR 2018

SE-4, 01 MAR 2018 to 29 MAR 2018