

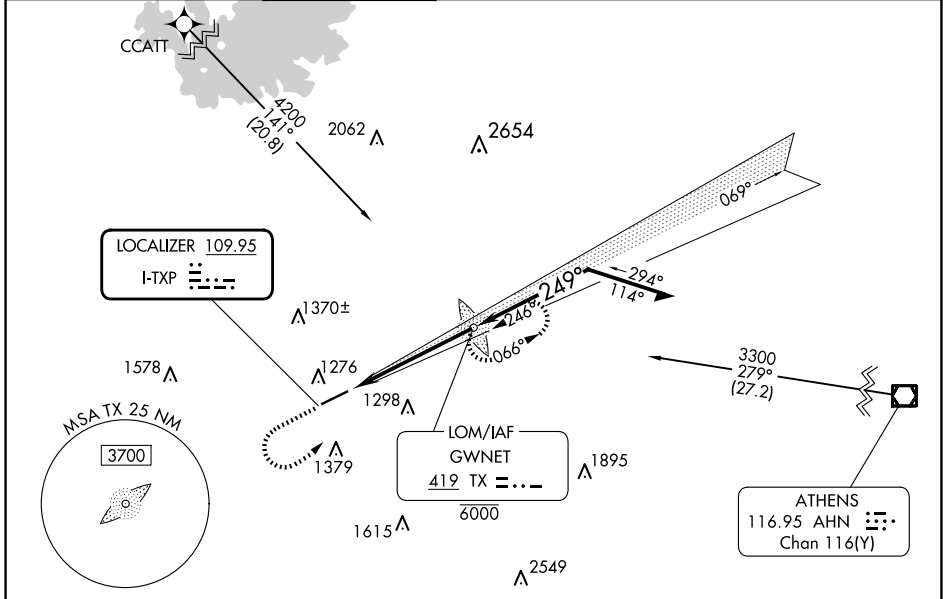
LOC I-TXP <b>109.95</b>	APP CRS <b>249°</b>	Rwy Idg TDZE Apt Elev <b>6001</b> <b>1039</b> <b>1062</b>
----------------------------	------------------------	--

# ILS or LOC RWY 25

GWINNETT COUNTY/BRISCOE FLD (LZU)

From CCATT: RNAV 1-GPS required.		MALSR 	MISSED APPROACH: Climb to 2400 then climbing left turn to 3100 direct GWINNET LOM and hold.
ADF required.			
<p><b>⚠</b> Autopilot coupled approach NA below 1700. Inop table does not apply to S-ILS 25.</p>			

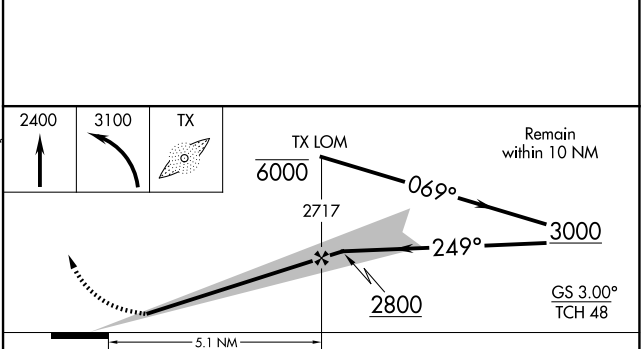
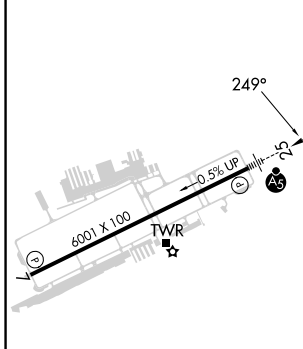
ATIS <b>132.275</b>	ATLANTA APP CON <b>126.975 239.275</b>	GWINNETT TOWER * <b>124.1</b> (CTAF) <b>1</b>	GND CON <b>121.8</b>	CLNC DEL <b>121.8</b>	CLNC DEL <b>134.0</b> (When twr closed)	UNICOM <b>123.05</b>
------------------------	---	--	-------------------------	--------------------------	---	-------------------------



SE-4, 15 MAY 2025 to 12 JUN 2025

SE-4, 15 MAY 2025 to 12 JUN 2025

ELEV 1062	TDZE 1039
-----------	-----------



CATEGORY	A	B	C	D
S-ILS 25		1239-3/4	200 (200-3/4)	
S-LOC 25	1500-3/4	461 (500-3/4)	1500-1	461 (500-1)
<input checked="" type="checkbox"/> CIRCLING	1640-1	578 (600-1)	1680-1 1/4 618 (700-1 1/4)	1700-2 638 (700-2)