

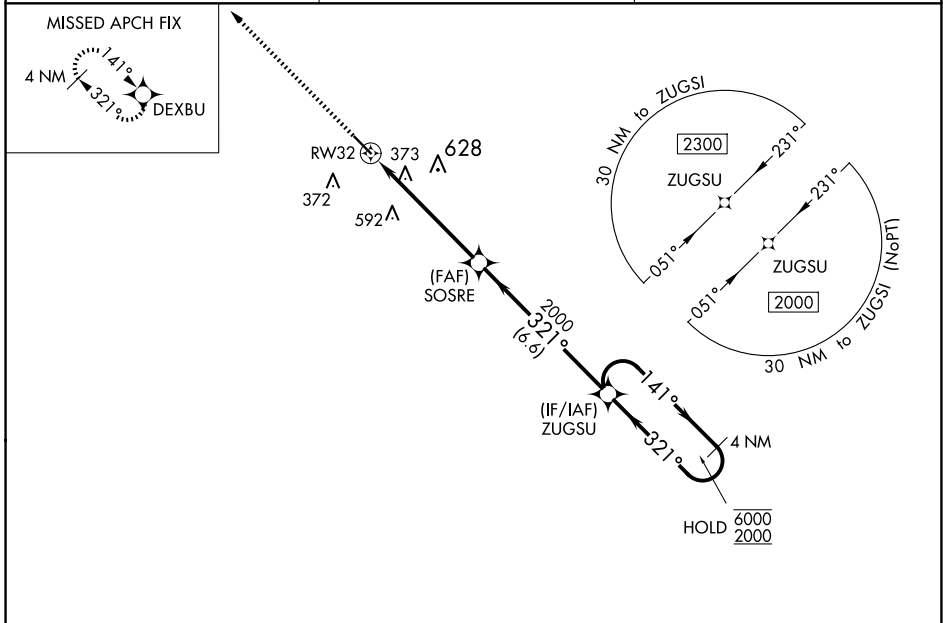
WAAS CH <b>61318</b> <b>W32A</b>	APP CRS <b>321°</b>	Rwy Idg <b>4999</b> TDZE <b>186</b> Apt Elev <b>187</b>
--	------------------------	---

# RNAV (GPS) RWY 32

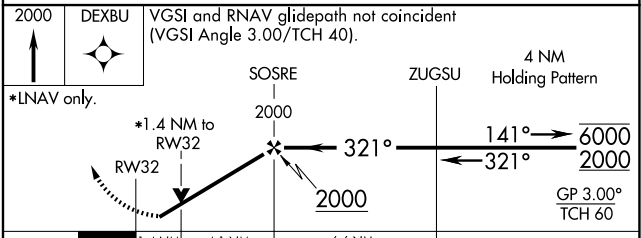
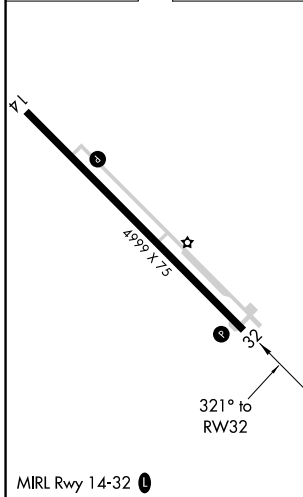
HOMERVILLE (HOE)

RNP APCH.	MISSED APPROACH: Climb to 2000 direct DEXBU and hold.
<p>▼ Rwy 32 helicopter visibility reduction below 3/4 SM NA. ▲ For uncompensated Baro-VNAV systems, LNAV/VNAV NA below -15°C or above 54°C.</p>	

AWOS-3 <b>118.725</b>	VALDOSTA APP CON ★ <b>126.6 285.6</b>	CTAF <b>122.9</b>
--------------------------	--	----------------------



ELEV <b>187</b>	TDZE <b>186</b>
-----------------	-----------------



CATEGORY	A	B	C	D
LPV DA	491-1 305 (400-1)			
LNAV/VNAV DA	672-1 3/8 486 (500-1 3/8)			
LNAV MDA	680-1 494 (500-1)	680-1 3/8 494 (500-1 3/8)		
<input checked="" type="checkbox"/> CIRCLING	680-1 493 (500-1)	740-1 553 (600-1)	940-2 1/4 753 (800-2 1/4)	940-2 1/2 753 (800-2 1/2)

SE-4, 15 MAY 2025 to 12 JUN 2025

SE-4, 15 MAY 2025 to 12 JUN 2025