

WAAS CH 42712 W36A	APP CRS 001°	Rwy Idg 5495 TDZE 418 Apt Elev 436
----------------------------------------	------------------------	---------------------------------------------------------------

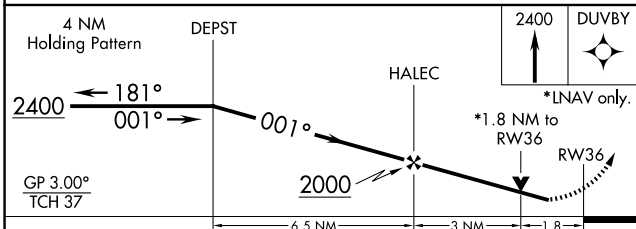
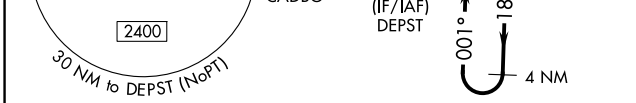
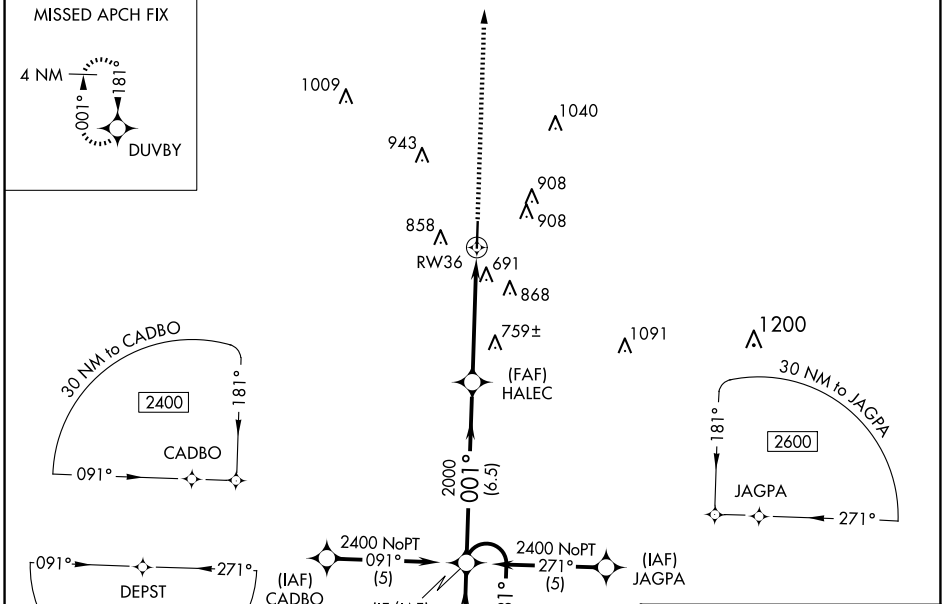
RNAV (GPS) RWY 36

MARION COUNTY-RANKIN FITE (HAB)

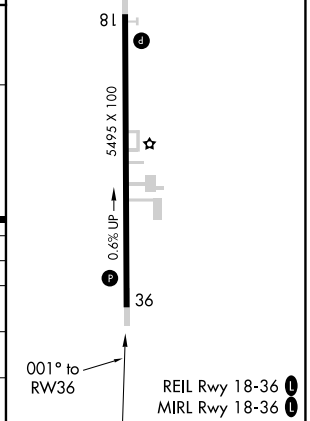
NA For uncompensated Baro-VNAV systems, LNAV/VNAV NA below -15°C (5°F) or above 48°C (118°F). DME/DME RNP-0.3 NA. Helicopter visibility reduction below 3/4 SM NA. Obtain local altimeter setting on CTAF; when not received, use Tupelo altimeter setting and increase DA 104 feet and all MDAs 120 feet, increase visibility LPV all Cats and LNAV Cats C, D 1/4 SM and Circling visibilities Cat A, C, D 1/4 SM. VDP NA when using Tupelo altimeter setting. Baro-VNAV NA when using Tupelo altimeter setting. Circling to Rwy 18 NA at night.

MISSED APPROACH:
Climb to 2400 direct DUVBY and hold.

MEMPHIS CENTER 127.1 269.4	UNICOM 122.8 (CTAF) 0
--------------------------------------	---------------------------------



ELEV 436	TDZE 418
----------	----------



CATEGORY	A	B	C	D
LPV DA		723-1 1/4	305 (300-1 1/4)	
LNAV/VNAV DA		1219-3	801 (800-3)	
LNAV MDA	1020-1	602 (600-1)	1020-1 1/4 602 (600-1 1/4)	1020-2 602 (600-2)
CIRCLING	1220-1 784 (800-1)	1260-1 1/4 824 (900-1 1/4)	1260-2 1/2 824 (900-2 1/2)	1260-2 3/4 824 (900-2 3/4)

SE-4, 15 MAY 2025 to 12 JUN 2025

SE-4, 15 MAY 2025 to 12 JUN 2025