

WAAS CH 77605 W23A	APP CRS 224°	Rwy Idg 5100 TDZE 1274 Apt Elev 1277
--	------------------------	---

RNAV (GPS) RWY 23

LEE GILMER MEML (GVL)

RNP APCH - GPS.

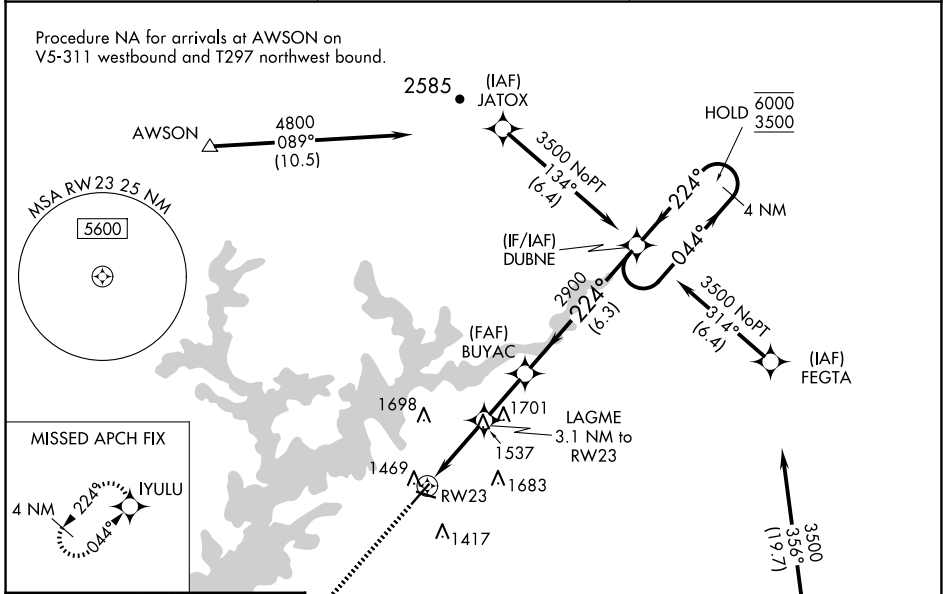
⚠ Circling Rwy 11, 29 NA at night. Rwy 23 helicopter visibility reduction below 3/4 SM NA. For uncompensated Baro-VNAV systems, LNAV/VNAV NA below -6°C or above 54°C.

MISSED APPROACH:
Climb to 3100 direct IYULU and hold.

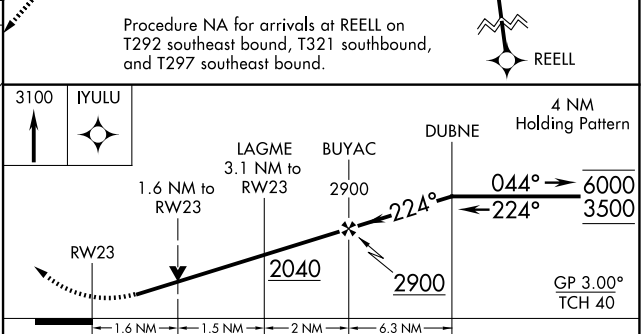
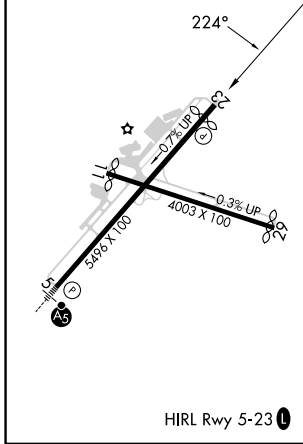
ASOS **126.475**

ATLANTA APP CON* **132.475 291.1**

UNICOM **123.075 (CTAF) 0**



ELEV 1277	D	TDZE 1274
-----------	----------	-----------



CATEGORY	A	B	C	D
LPV DA		1541-7/8	267 (300-7/8)	
LNAV/VNAV DA		1637-1	363 (400-1)	
LNAV MDA	1800-1	526 (600-1)	1800-1½	526 (600-1½)
CIRCLING	1800-1 523 (600-1)	2000-1 723 (800-1)	2000-2 723 (800-2)	2020-2½ 743 (800-2½)

SE-4, 15 MAY 2025 to 12 JUN 2025

SE-4, 15 MAY 2025 to 12 JUN 2025