



WAAS CH 42605 W05A	APP CRS 044°	Rwy Idg 5370 TDZE 1275 Apt Elev 1277
--	------------------------	---

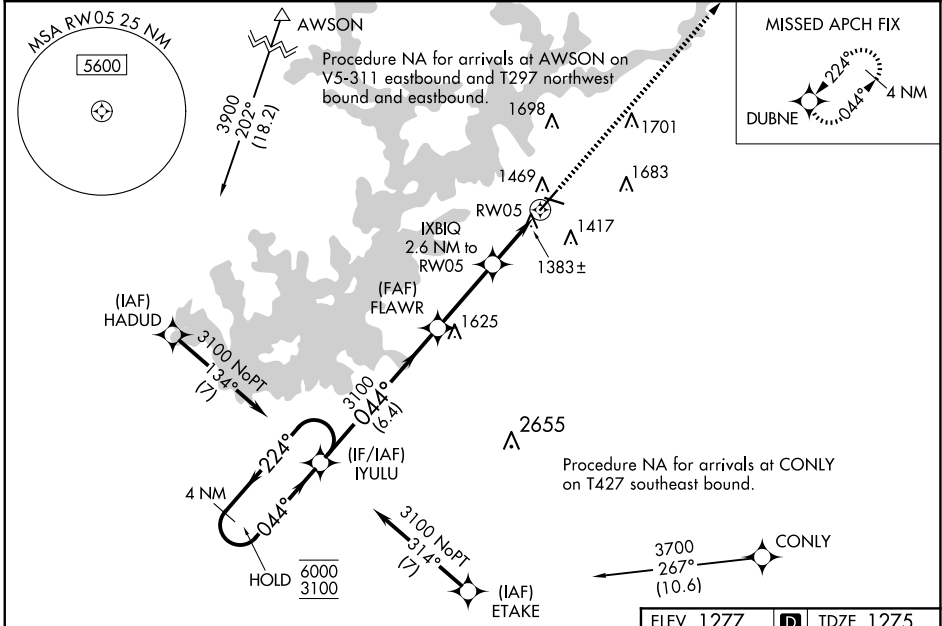
RNAV (GPS) RWY 5

LEE GILMER MEML (GVL)

RNP APCH - GPS.


MALSRL  MISSED APPROACH: Climb to 3500 direct DUBNE and hold.

ASOS 126.475	ATLANTA APP CON* 132.475 291.1	UNICOM 123.075 (CTAF) 
------------------------	--	---




SE-4, 15 MAY 2025 to 12 JUN 2025

SE-4, 15 MAY 2025 to 12 JUN 2025

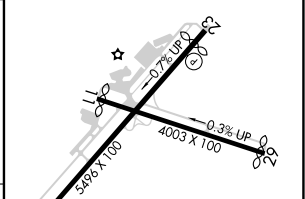
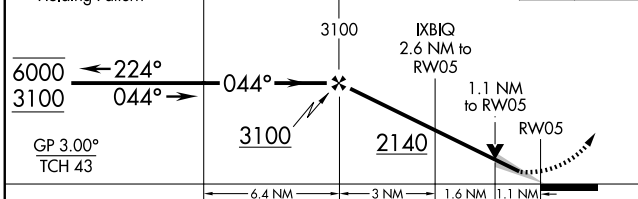
ELEV 1277  TDZE 1275

VGSI and RNAV glidepath not coincident (VGSI Angle 3.00/TCH 30).

4 NM Holding Pattern: IYULU, FLAWR

3500 DUBNE 

GP 3.00° TCH 43



CATEGORY	A	B	C	D
LPV DA		1475-½	200 (200-½)	
LNAV/VNAV DA		1551-½	276 (300-½)	
LNAV MDA	1640-½	365 (400-½)	1640-⅝	365 (400-⅝)
CIRCLING	1780-1 503 (600-1)	2000-1 723 (800-1)	2000-2 723 (800-2)	2020-2½ 743 (800-2½)

HIRL Rwy 5-23 