

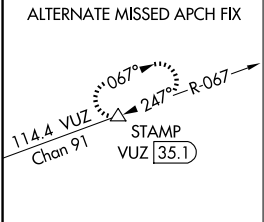
LOC/DME I-GAD <b>108.35</b> Chan 20(Y)	APP CRS <b>244°</b>	Rwy Ldg TDZE Apt Elev <b>6802</b> <b>560</b> <b>569</b>
--	------------------------	--

**ILS or LOC RWY 24**  
NORTHEAST ALABAMA RGNL (GAD)

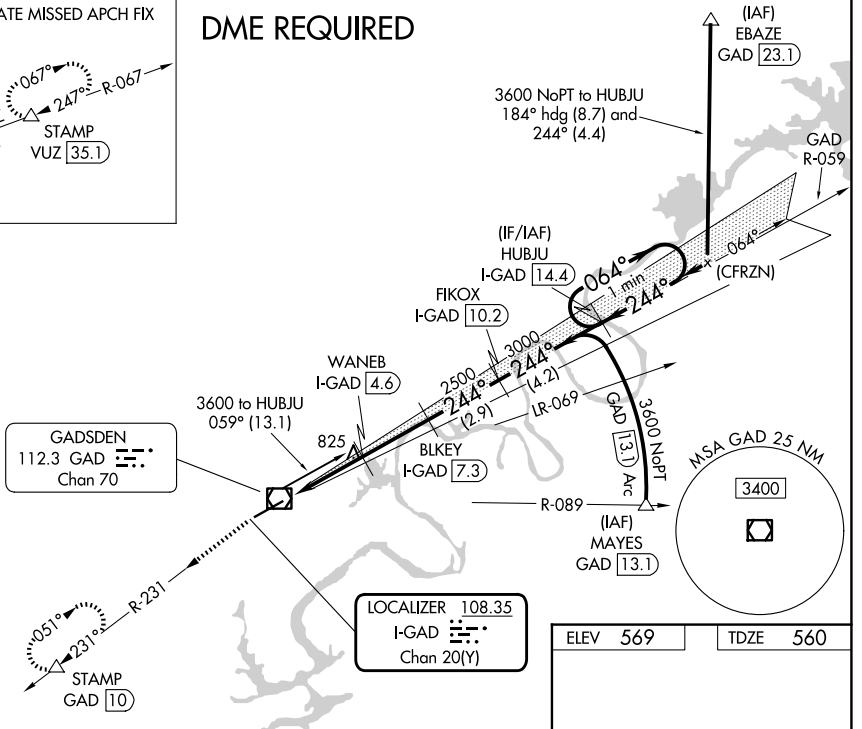
**▼** DME required. VDP NA when using Annonisim altimeter setting. When local altimeter setting not received, use Annonisim altimeter setting and increase DA to 845 feet and all visibilities ¼ SM: increase all MDAs 80 feet and visibility S-LOC Cats C and D ¼ SM and Circling Cat C ½ SM.

**▲** MISSED APPROACH: Climb to 3600 on GAD VOR/DME R-231 to STAMP/GAD 10 DME and hold, continue climb-in-hold to 3600.

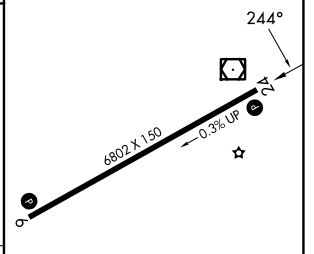
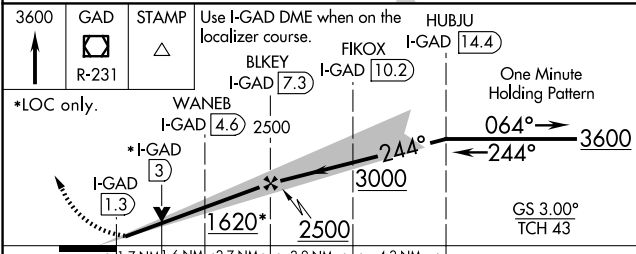
AWOS-3PT <b>127.825</b>	BIRMINGHAM APP CON <b>125.45 279.65</b>	CLNC DEL <b>120.05 257.7</b>	UNICOM <b>122.725 (CTAF) 0</b>
----------------------------	--	---------------------------------	-----------------------------------



**DME REQUIRED**



ELEV 569	TDZE 560
----------	----------



CATEGORY	A	B	C	D
S-ILS 24		779-¾	219 (300-¾)	
S-LOC 24	1140-1	580 (600-1)	1140-1¾	580 (600-1¾)
CIRCLING	1140-1	571 (600-1)	1440-2½	1680-3
			871 (900-2½)	1111 (1200-3)

SE-4, 07 AUG 2025 to 04 SEP 2025

SE-4, 07 AUG 2025 to 04 SEP 2025