

WAAS CH <b>72924</b> <b>W02A</b>	APP CRS <b>017°</b>	Rwy Idg <b>5000</b> TDZE <b>361</b> Apt Elev <b>365</b>
--	------------------------	---

# RNAV (GPS) RWY 2

FITZGERALD MUNI (FZG)

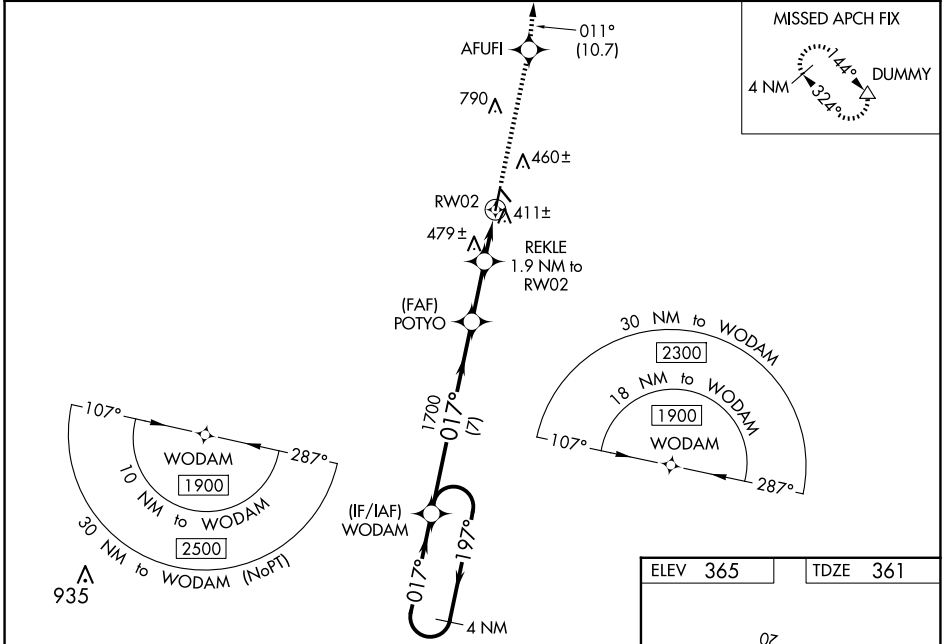
RNP APCH - GPS.

**▼** Circling NA to Rwy 15 and 33. Baro-VNAV and VDP NA when using Tifton altimeter setting.  
**▲** For uncompensated Baro-VNAV systems, LNAV/VNAV NA below -15°C or above 54°C.  
 When local altimeter setting not received, use Tifton altimeter setting: increase LPV DA to 656 feet and LNAV/VNAV DA to 691 feet; increase LNAV/VNAV all Cats visibility 1/8 SM, increase all MDAs 60 feet and LNAV visibility Cats C/D 1/8 SM, and Circling Cats C/D visibility 1/4 SM. Inop table does not apply to LPV all Cats and LNAV Cats C/D. For inop ALS increase LNAV/VNAV Cats A/B visibility to 7/8 SM. For inop ALS when using Tifton altimeter setting increase LPV Cats A/B visibility to 7/8 SM and LNAV/VNAV Cats A/B visibility to 1 SM.

**ODALS**

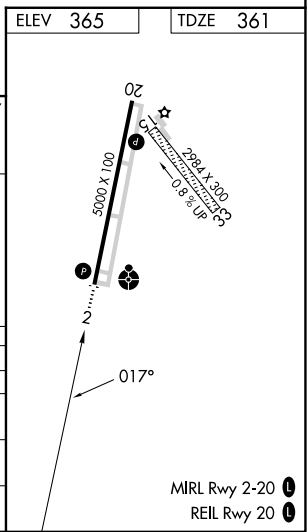
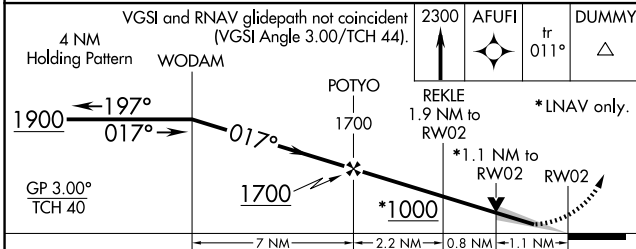
**MISSED APPROACH:**  
Climb to 2300 direct AFUFI and on track 011° to DUMMY and hold.

AWOS-3PT <b>118.625</b>	JACKSONVILLE CENTER <b>127.575 269.025</b>	UNICOM <b>123.0 (CTAF)</b>
----------------------------	---	-------------------------------



SE-4, 15 MAY 2025 to 12 JUN 2025

SE-4, 15 MAY 2025 to 12 JUN 2025



CATEGORY	A	B	C	D
LPV DA	611-7/8 250 (300-7/8)			
LNAV/VNAV DA	646-7/8 285 (300-7/8)			
LNAV MDA	740-7/8 379 (400-7/8)		740-1 379 (400-1)	
<b>CIRCLING</b>	880-1 515 (600-1)		1160-2 1/4 795 (800-2 1/4)   1160-2 1/2 795 (800-2 1/2)	