


|  |                        |   |
|--|------------------------|---|
| WAAS<br>CH <b>82104</b><br><b>W02A</b> | APP CRS<br><b>019°</b> | Rwy Idg <b>6506</b><br>TDZE <b>300</b><br>Apt Elev <b>303</b> |
|--|------------------------|---|

# RNAV (GPS) RWY 2

HEART OF GEORGIA RGNL (E2M)

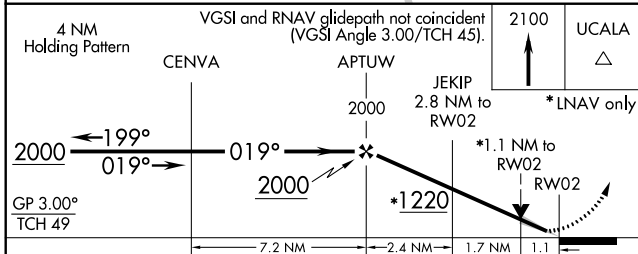
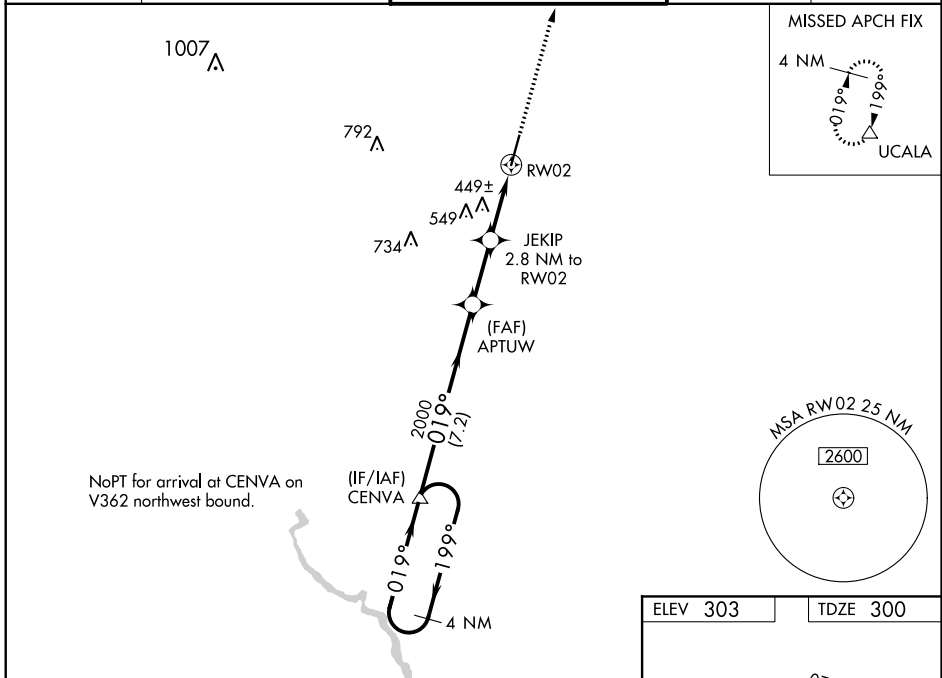
**⚠** Baro-VNAV NA when using Dublin altimeter setting. For uncompensated Baro-VNAV systems, LNAV/VNAV NA below -15°C (5°F) or above 54°C (130°F). When local altimeter setting not received, use Dublin altimeter setting and increase all DA 52 feet and all MDA 60 feet; increase LNAV/VNAV all Cats, LNAV Cat C/D and Circling Cat C visibility ¼ miles. DME/DME RNP-0.3 NA. VDP NA with Dublin altimeter setting.

MALSR

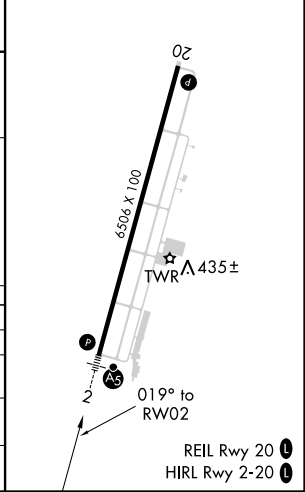


MISSED APPROACH:  
Climb to 2100 direct UCALA and hold.

|                        |   |  |                           |                         |
|------------------------|---|--|---------------------------|-------------------------|
| ATIS<br><b>119.425</b> | JACKSONVILLE CENTER<br><b>127.575 269.025</b> | HEART OF GEORGIA TOWER ★<br><b>124.55 (CTAF) 0</b> | GND CON<br><b>121.175</b> | UNICOM<br><b>122.95</b> |
|------------------------|---|--|---------------------------|-------------------------|



|          |          |
|----------|----------|
| ELEV 303 | TDZE 300 |
|----------|----------|



| CATEGORY          | A                    | B                    | C                    | D                    |
|-------------------|----------------------|----------------------|----------------------|----------------------|
| LPV DA            |                      | 500-½                | 200 (200-½)          |                      |
| LNAV/VNAV DA      |                      | 595-½                | 295 (300-½)          |                      |
| LNAV MDA          | 700-½ 400 (400-½)    |                      | 700-¾ 400 (400-¾)    |                      |
| <b>C</b> CIRCLING | 760-1<br>457 (500-1) | 820-1<br>517 (600-1) | 900-½<br>597 (600-½) | 900-2<br>597 (600-2) |

SE-4, 21 JUN 2018 to 19 JUL 2018

SE-4, 21 JUN 2018 to 19 JUL 2018