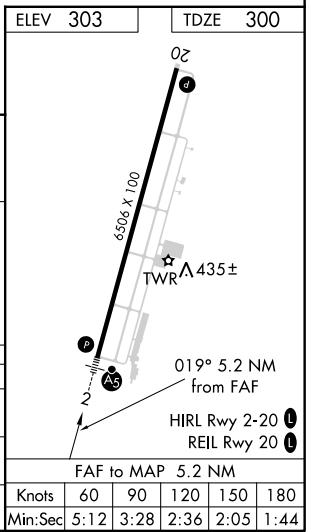
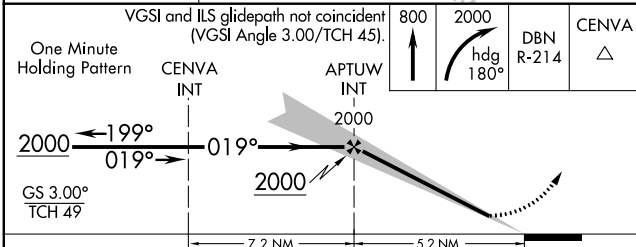
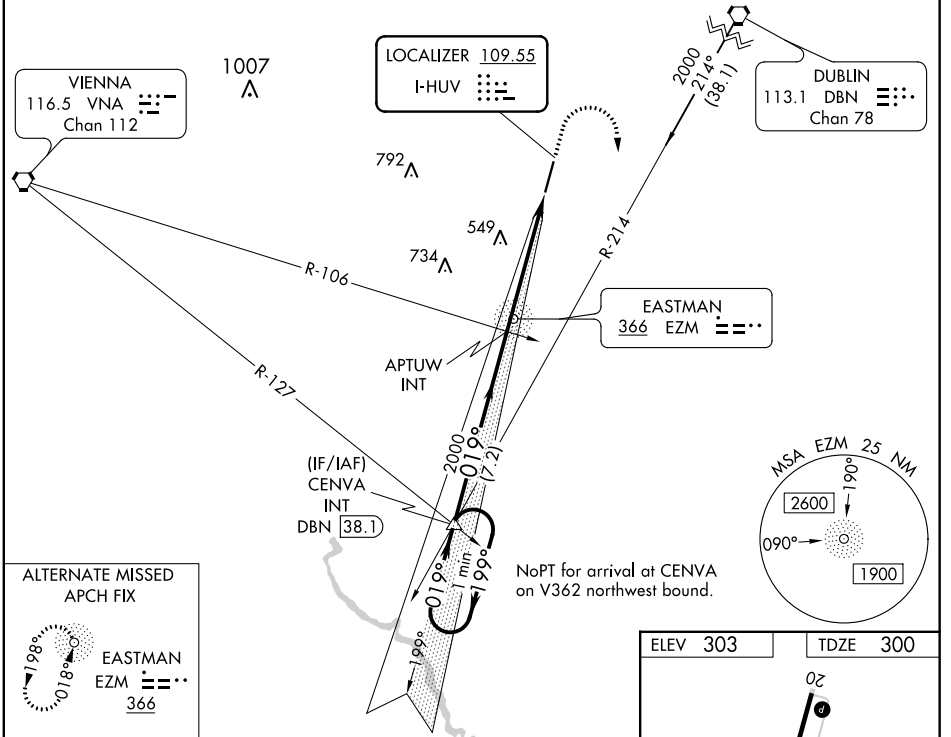


LOC I-HUV 109.55	APP CRS 019°	Rwy Idg 6506
		TDZE 300
		Apt Elev 303

ILS or LOC RWY 2

HEART OF GEORGIA RGNL (E2M)

<p>When local altimeter setting not received, use Dublin altimeter setting and increase all DA 52 feet and all MDA 60 feet; increase S-LOC 2 Cat C/D and Circling Cat C visibility 1/4 mile.</p>	<p>MALS R</p>	<p>MISSED APPROACH: Climb to 800 then climbing right turn to 2000 on heading 180° and DBN VORTAC R-214 to CENVA INT and hold.</p>		
		<p>ATIS 119.425</p>	<p>JACKSONVILLE CENTER 127.575 269.025</p>	<p>HEART OF GEORGIA TOWER ★ 124.55 (CTAF) 0</p>



CATEGORY	A	B	C	D
S-ILS 2	500-1/2 200 (200-1/2)			
S-LOC 2	820-1/2	520 (600-1/2)	820-1	520 (600-1)
CIRCLING	820-1	517 (600-1)	900-1 1/2 597 (600-1 1/2)	900-2 597 (600-2)

SE-4, 21 JUN 2018 to 19 JUL 2018

SE-4, 21 JUN 2018 to 19 JUL 2018