

| | | |
|---|------------------------|--|
| LOC/DME I-EKY 111.75 Chan 54 (Y) | APP CRS 053° | Rwy Idg 6007 TDZE 700 Apt Elev 700 |
|---|------------------------|--|

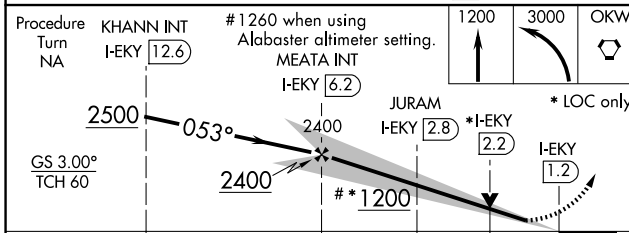
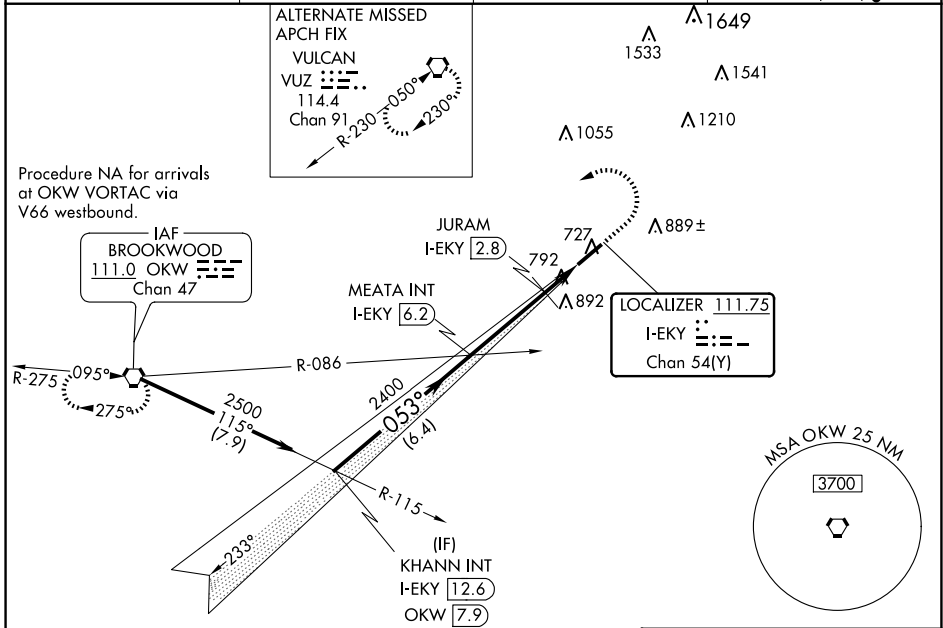
ILS or LOC RWY 5

BESSEMER (EKY)

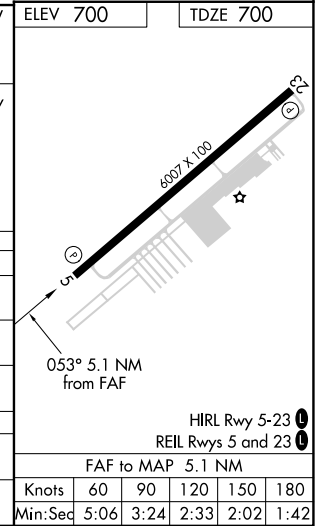
NA When local altimeter setting not received, use Alabaster altimeter setting and increase DA 41 feet, increase all MDAs 60 feet; increase S-LOC 5 Cat C visibility 1/8 SM and Cat D visibility 1/4 SM, increase Circling Cat C visibility 1/8 SM Cat D visibility 1/4 SM, increase JURAM fix S-LOC 5 Cat C visibility 1/8 SM and Cat D visibility 1/4 SM; increase Circling Cat D visibility 1/4 SM. VDP NA with Alabaster altimeter setting.

MISSED APPROACH: Climb to 1200 then climbing left turn to 3000 direct OKW VORTAC and hold.

| | | | |
|----------------------------|---|---------------------------|-------------------------------|
| AWOS-3PT 118.825 | BIRMINGHAM APP CON 124.9 351.85 | CLNC DEL 123.75 | UNICOM 123.0 (CTAF) |
|----------------------------|---|---------------------------|-------------------------------|



| CATEGORY | A | B | C | D |
|--------------------|---------|-------------|-------------------------------|-------------------------------|
| S-ILS 5 | 900-3/4 | | 200 (200-3/4) | |
| S-LOC 5 | 1200-1 | 500 (500-1) | 1200-1 3/8 500 (500-1 3/8) | 1200-1 1/2 500 (500-1 1/2) |
| CIRCLING | 1200-1 | 500 (500-1) | 1220-1 1/2 520 (600-1 1/2) | 1320-2 620 (700-2) |
| JURAM FIX MINIMUMS | | | | |
| S-LOC 5 | 1100-1 | 400 (400-1) | 1100-1 1/8 400 (400-1 1/8) | 1100-1 1/4 400 (400-1 1/4) |
| CIRCLING | 1200-1 | 500 (500-1) | 1220-1 1/2 520 (600-1 1/2) | 1320-2 620 (700-2) |



SE-4, 15 MAY 2025 to 12 JUN 2025

SE-4, 15 MAY 2025 to 12 JUN 2025