

WAAS CH 93704 W32A	APP CRS 318°	Rwy Idg TDZE Apt Elev	8496 382 401
--	------------------------	-----------------------------	---

RNAV (GPS) RWY 32

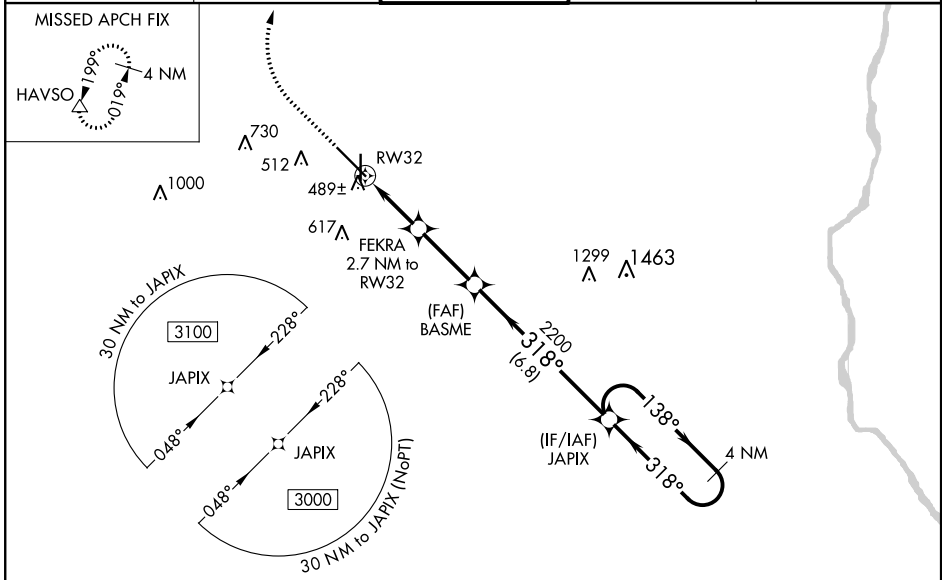
DOTHAN RGNL (DHN)

▽ For uncompensated Baro-VNAV systems, LNAV/VNAV NA below -15°C (5°F) or above 41°C (105°F).
DME/DME RNP-0.3 NA.
**RVR 1800 authorized with use of FD or AP or HUD to DA.

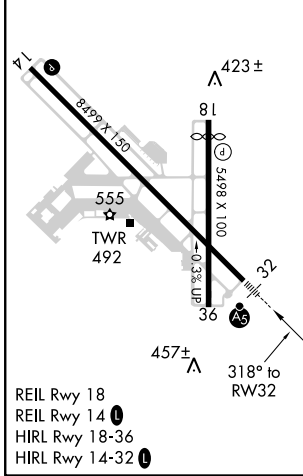
MALSRL
A5

MISSED APPROACH: Climb to 900 then climbing right turn to 3000 direct HAVSO and hold.

ATIS 135.72	CAIRNS APP CON * 125.4 327.125	DOTHAN TOWER* 118.4 (CTAF) 0 257.6	GND CON 121.7 348.6	UNICOM 122.95
-----------------------	--	---	-------------------------------	-------------------------



ELEV 401	D	TDZE 382
----------	----------	----------



900	3000	HAVSO	4 NM Holding Pattern			
*LNAV only.		FEKRA 2.7 NM to RWY 32	BASME 2200	138° → 3000		
*1 NM to RWY 32		*1280		← 318°		
1 NM 1.8 NM		2.8 NM		6.8 NM		
CATEGORY	A	B	C	D		
LPV DA**	582/24		200 (200-½)			
LNAV/VNAV DA	670/24		288 (300-½)			
LNAV MDA	740/24		358 (400-½)		740/30 358 (400-¾)	
CIRCLING	860-1 459 (500-1)		860-1½ 459 (500-1½)		960-2 559 (600-2)	

GP 3.00° TCH 57

SE-4, 09 NOV 2017 to 07 DEC 2017

SE-4, 09 NOV 2017 to 07 DEC 2017