

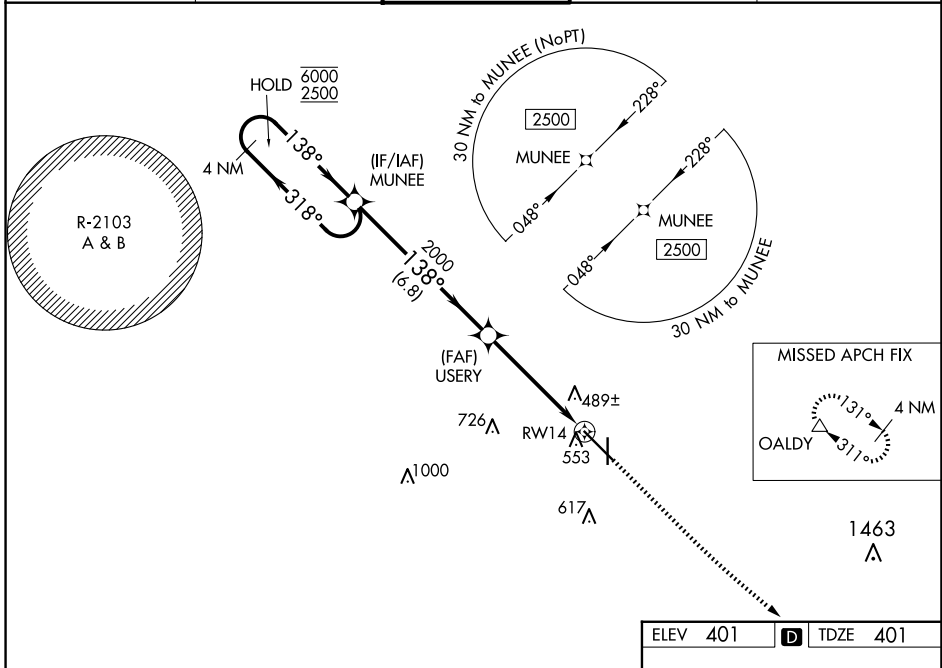
WAAS CH <b>86504</b> <b>W14A</b>	APP CRS <b>138°</b>	Rwy ldg <b>8496</b> TDZE <b>401</b> Apt Elev <b>401</b>
--	------------------------	---

# RNAV (GPS) RWY 14

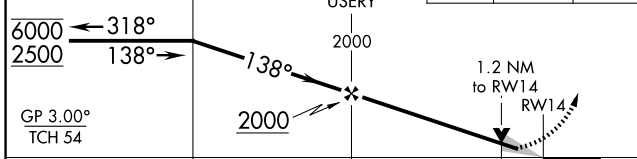
DOTHAN RGNL (DHN)

RNP APCH - GPS.		MISSED APPROACH: Climb to 900 then climbing left turn to 3000 direct OALDY and hold.
<p>▼ For uncompensated Baro-VNAV systems, LNAV/VNAV NA below -3°C or above 54°C. Intense student helicopter pilot training in vicinity of airport.</p>		

ATIS <b>135.725</b>	CAIRNS APP CON * <b>125.4 327.125</b>	DOTHAN TOWER * <b>118.4 (CTAF) 0 257.6</b>	GND CON <b>121.7 348.6</b>	UNICOM <b>122.95</b>
------------------------	--	---	-------------------------------	-------------------------

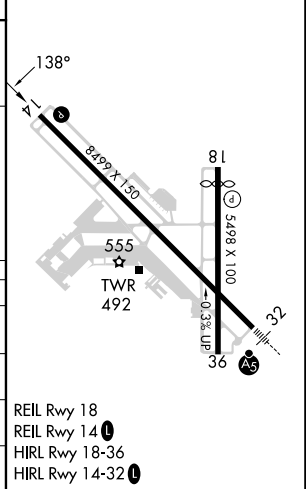


4 NM Holding Pattern	VGSI and RNAV glidepath not coincident (VGSI Angle 3.00/TCH 40).	900	3000	OALDY
----------------------	--	-----	------	-------



CATEGORY	A	B	C	D
LPV DA	601-3/4		200 (200-3/4)	
LNAV/VNAV DA	724-1		323 (400-1)	
LNAV MDA	820-1 419 (500-1)		820-1 1/8 419 (500-1 1/8)	
CIRCLING	860-1 459 (500-1)		920-1 1/2 1040-2 519 (600-1 1/2) 639 (700-2)	

ELEV 401	D	TDZE 401
----------	---	----------



SE-4, 15 MAY 2025 to 12 JUN 2025

SE-4, 15 MAY 2025 to 12 JUN 2025