

FAIRHOPE, ALABAMA

AL-5522 (FAA)

23334

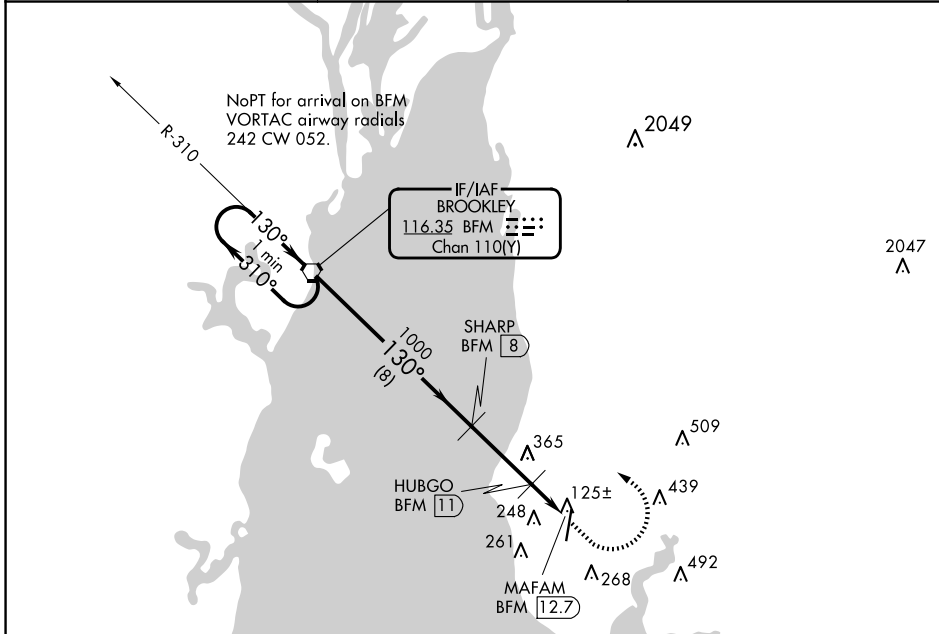
VORTAC BFM <b>116.35</b> Chan <b>110(Y)</b>	APP CRS <b>130°</b>	Rwy Idg TDZE Apt Elev	<b>N/A</b> <b>N/A</b> <b>91</b>
---	------------------------	-----------------------------	---------------------------------------

**VOR/DME-A**  
H L SONNY CALLAHAN (CQF)

**⚠** When local altimeter setting not received, use Mobile Intl altimeter setting and increase all MDA 60 feet; increase Circling Cats C/D visibility ¼ SM.

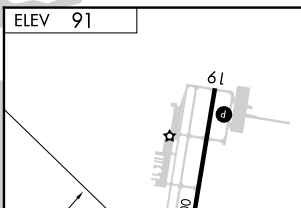
MISSED APPROACH: Climb to 2000 then left turn direct BFM Vortac and hold.

AWOS-3PT <b>118.425</b>	MOBILE APP CON * <b>118.5 269.3</b>	UNICOM <b>123.0 (CTAF) 0</b>
----------------------------	--	---------------------------------



SE-4, 15 MAY 2025 to 12 JUN 2025

SE-4, 15 MAY 2025 to 12 JUN 2025



One Minute Holding Pattern	BFM VORTAC	2000	BFM
2000 ← 310°	→ 130°	730°	1000
*740 when using Mobile Intl altimeter setting.	8 NM	3 NM	1.7
	SHARP BFM (8)	HUBGO BFM (11)	MAFAM BFM (12.7)

CATEGORY	A	B	C	D
CIRCLING	560-1 469 (500-1)	580-1 489 (500-1)	720-1¾ 629 (700-1¾)	740-2 649 (700-2)

ELEV 91
HIRL Rwy 1-19 0
REIL Rwys 1 and 19 0

FAIRHOPE, ALABAMA  
Amdt 7A 20MAY21

30°28'N-87°53'W

H L SONNY CALLAHAN (CQF)  
**VOR/DME-A**