

LOC I-CCO 110.75	APP CRS 322°	Rwy Idg TDZE Apt Elev	5500 952 970
----------------------------	------------------------	-----------------------------	---

ILS or LOC/NDB RWY 32

NEWNAN COWETA COUNTY (CCO)

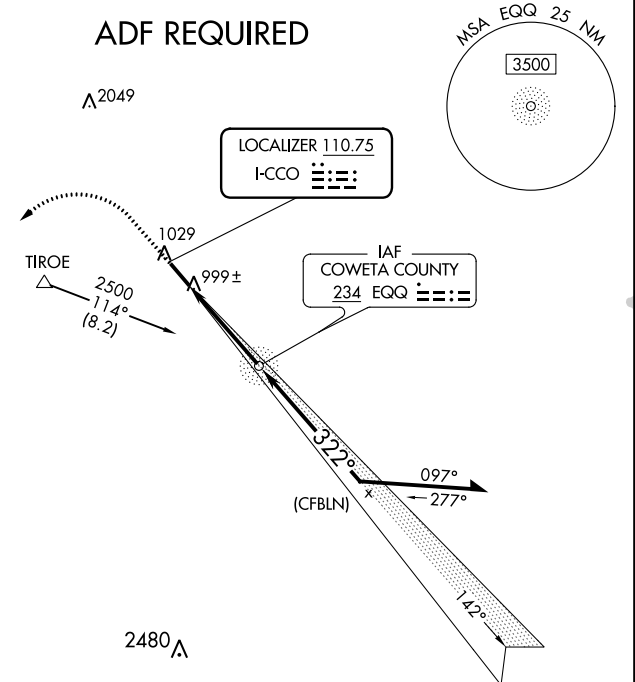
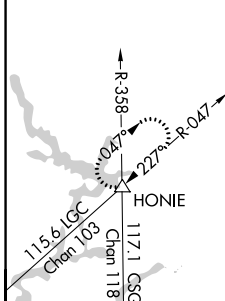
⚠ Inop table does not apply. When local altimeter setting not received, use Atlanta Rgnl Falcon Field altimeter setting and increase DA to 1226 and all MDA 60 feet; increase Circling Cats C/D visibility ¼ mile. Helicopter visibility reduction below 1 SM NA. Night Landing: Rwy 32 NA.

MALSF MISSED APPROACH: Climb to 1800 then climbing left turn to 4000 on LGC VORTAC R-047 to HONIE INT/LGC 12 DME and hold.

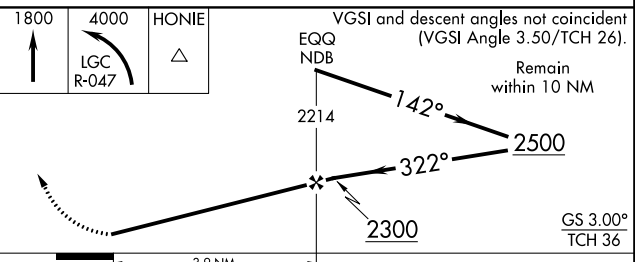
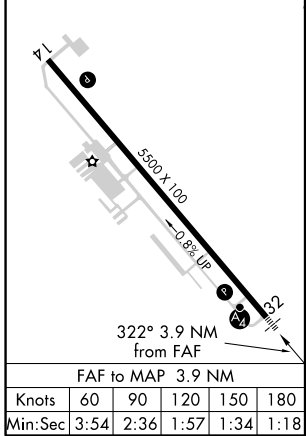
AWOS-3PT 118.975	ATLANTA APP CON 119.8 354.125	CLNC DEL 119.8	GCO 121.725	UNICOM 122.7 (CTAF)
----------------------------	---	--------------------------	-----------------------	-------------------------------

ALTERNATE MISSED APCH FIX COWETA COUNTY
234 EQQ

Procedure NA for arrivals at TIROE on V154 northwest bound.



ELEV 970 A ₁₀₂₀	TDZE 952 MIRL Rwy 14-32
-------------------------------	----------------------------



CATEGORY	A	B	C	D
S-ILS 32		1202-1	250 (300-1)	
S-LOC 32		1260-1	308 (300-1)	
C CIRCLING	1360-1	390 (400-1)	1540-1½ 570 (600-1½)	1600-2 630 (700-2)

SE-4, 01 FEB 2018 to 01 MAR 2018

SE-4, 01 FEB 2018 to 01 MAR 2018