

ILS or LOC RWY 6

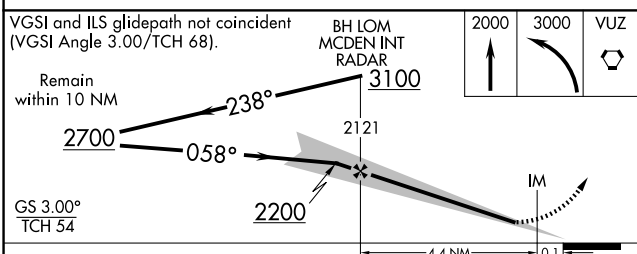
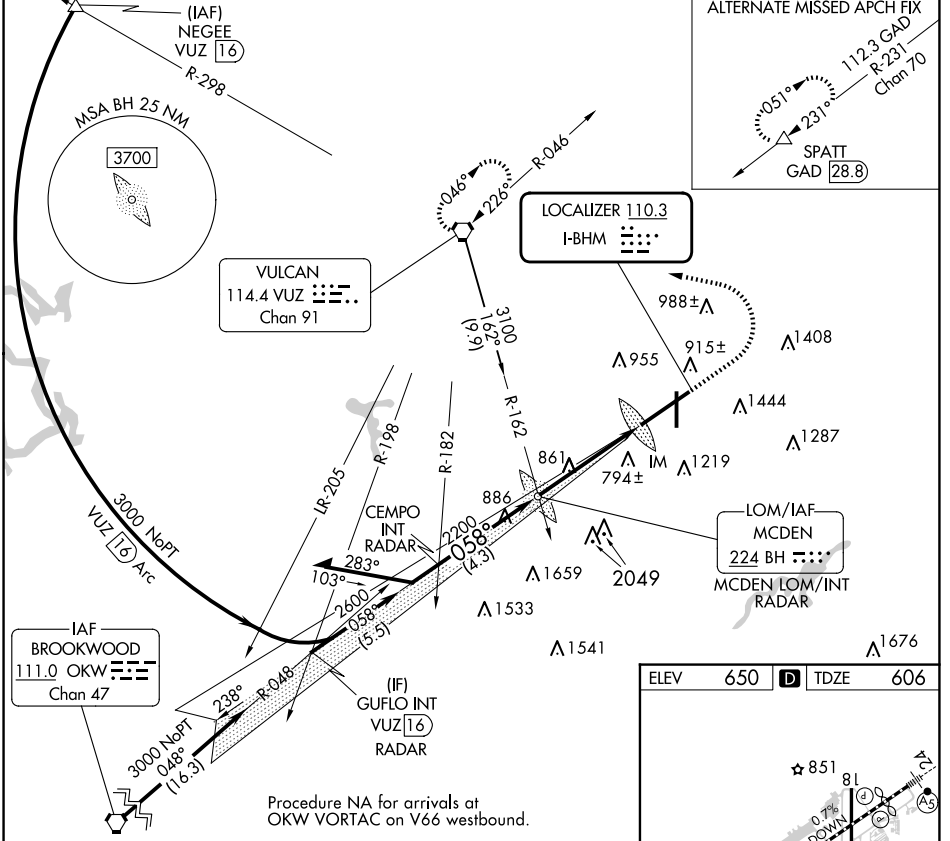
BIRMINGHAM-SHUTTLESWORTH INTL (BHM)

LOC I-BHM 110.3	APP CRS 058°	Rwy ldg 12007 TDZE 606 Apt Elev 650
---------------------------	------------------------	--

RNP APCH-GPS. From OKW VORTAC.
 For inop ALS, increase S-ILS 6 Cat E visibility to RVR 4000 and S-LOC 6 Cat C, D, E visibility to 1 1/2 SM. Cat E procedure turn NA.

ALSF-2
 MISSED APPROACH: Climb to 2000 then climbing left turn to 3000 direct VUZ VORTAC and hold.

ATIS 119.4 270.1	BIRMINGHAM APP CON 123.8 256.8	BIRMINGHAM TOWER 119.9 317.725	GND CON 121.7 348.6	CLNC DEL 125.675 305.2
----------------------------	--	--	-------------------------------	----------------------------------



ELEV 650	TDZE 606
----------	----------

REIL Rwy 18 and 36
 TDZ/CL Rwy 6
 HIRL Rwy 6-24
 MIRL Rwy 18-36

FAF to MAP 4.5 NM					
Knots	60	90	120	150	180
Min:Sec	4:30	3:00	2:15	1:48	1:30

CATEGORY	A	B	C	D	E
S-ILS 6	806/18		200 (200-1/2)		
S-LOC 6	1160/24 554 (600-1/2)		1160/60 554 (600-1 1/4)		

ILS or LOC RWY 6

SE-4, 15 MAY 2025 to 12 JUN 2025

SE-4, 15 MAY 2025 to 12 JUN 2025