

VORTAC BFM <b>116.35</b> Chan 110(Y)	APP CRS <b>333°</b>	Rwy Idg TDZE <b>25</b> Apt Elev <b>26</b>	<b>9618</b>
--	------------------------	---	-------------

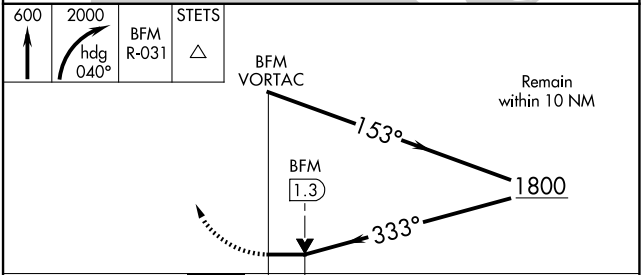
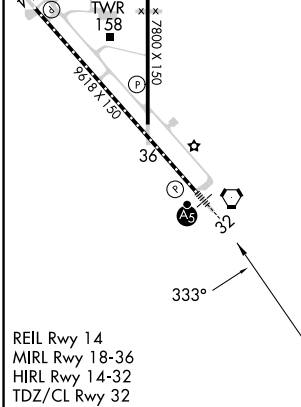
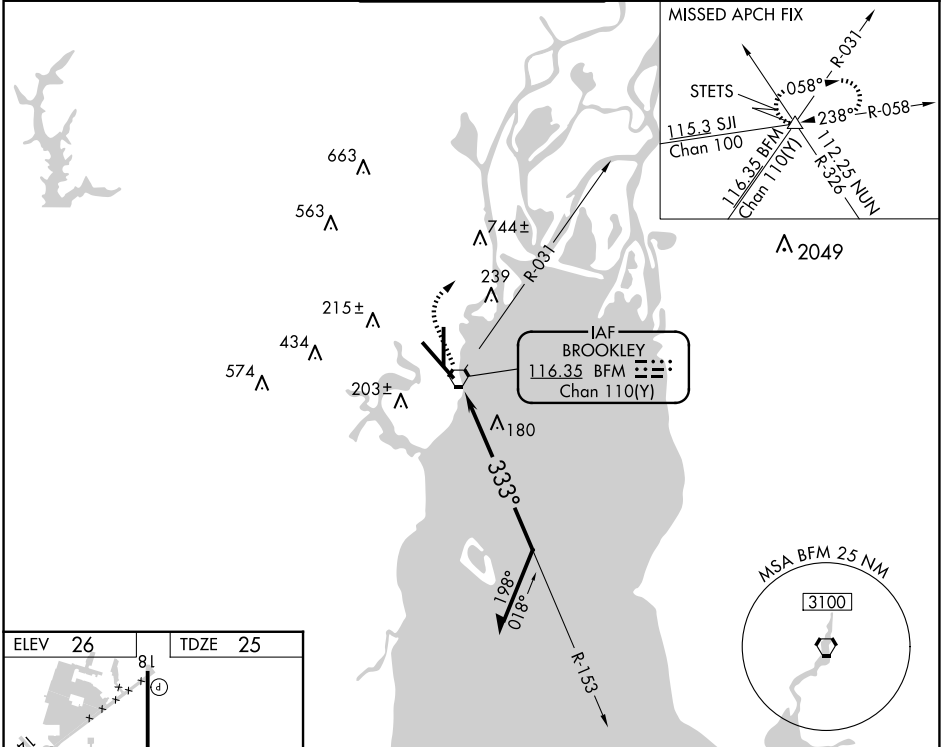
# VOR RWY 32

MOBILE INTL (BFM)

**⚠** When local altimeter setting not received, use Mobile Rgnl altimeter setting and increase all MDAs 60 feet. For inop MALS, increase S-32 Cats C/D visibility to 1 $\frac{1}{2}$  SM. For inop MALS when using Mobile Rgnl altimeter setting, increase S-32 Cats C/D visibility to 1 $\frac{1}{2}$  SM.

**MALS** MISSED APPROACH: Climb to 600 then climbing right turn to 2000 via heading 040° and BFM VORTAC R-031 to STETS INT and hold.

ATIS <b>135.575</b>	MOBILE APP CON ★ <b>118.5 269.3</b>	INTERNATIONAL TOWER★ <b>118.8</b> (CTAF) <b>0 251.1</b>	GND CON <b>121.7 239.3</b>	UNICOM <b>122.95</b>
------------------------	--	--	-------------------------------	-------------------------



CATEGORY	A	B	C	D
S-32	540/24	515 (600- $\frac{1}{2}$ )	540/55	515 (600-1)
<b>C</b> CIRCLING	680-1	654 (700-1)	680-1 $\frac{3}{4}$ 654 (700- $\frac{3}{4}$ )	1100-3 1074 (1000-3)

SE-4, 15 MAY 2025 to 12 JUN 2025

SE-4, 15 MAY 2025 to 12 JUN 2025