

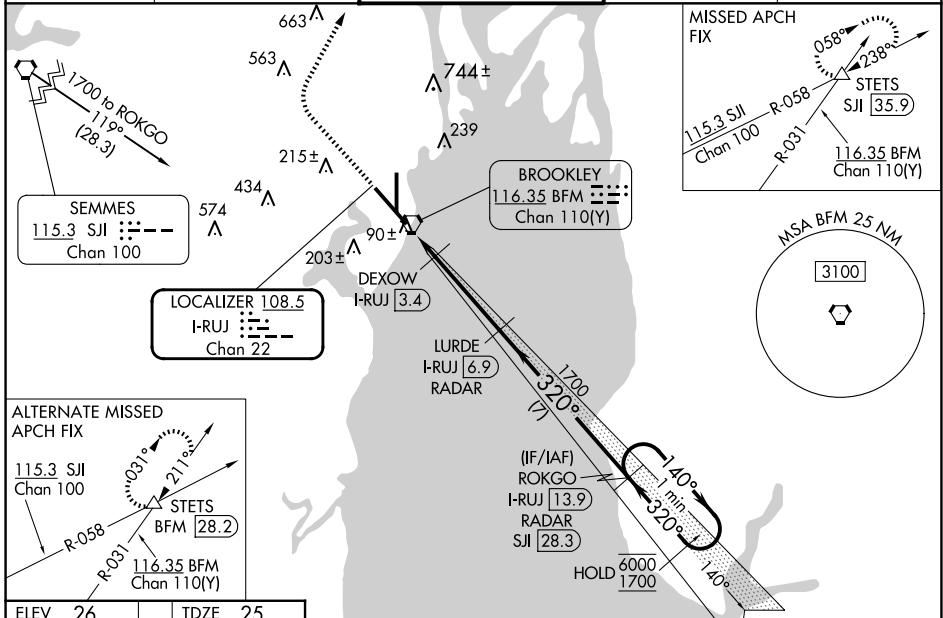
LOC/DME I-RUJ <b>108.5</b> Chan 22	APP CRS <b>320°</b>	Rwy Idg TDZE Apt Elev	<b>9618</b> <b>25</b> <b>26</b>
--	------------------------	-----------------------------	---------------------------------------

# ILS or LOC RWY 32

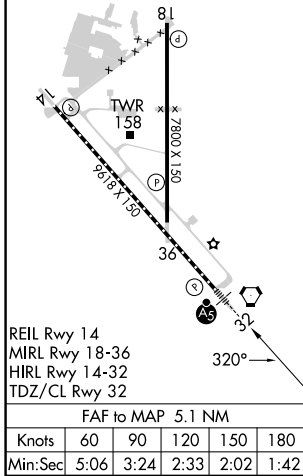
MOBILE INTL (BFM)

DME or RADAR required.	MALS R 	MISSED APPROACH: Climb to 800 then climbing right turn to 2000 on heading 030° and on SJJ R-058 to STETS INT/SJJ 35.9 DME and hold.
 For inop ALS, increase S-LOC 32 Cat C/D visibility to 1¾ and DEXOW S-LOC 32 Cat C/D visibility to RVR 4500.		

ATIS <b>135.575</b>	MOBILE APP CON ★ <b>118.5 269.3</b>	INTERNATIONAL TOWER ★ <b>118.8 (CTAF) 251.1</b>	GND CON <b>121.7 239.3</b>	UNICOM <b>122.95</b>
------------------------	--	--	-------------------------------	-------------------------



ELEV 26	TDZE 25
---------	---------



800	2000	SJJ R-058	STETS	VGSI and ILS glidepath not coincident (VGSI Angle 3.00/TCH 71).
	hdg 030°			LURDE I-RUJ [6.9] RADAR
				ROKGO I-RUJ [13.9] RADAR
				DEXOW I-RUJ [3.4]
				I-RUJ [1.8] I-RUJ [2.6]
				1700 320° 140° 6000 1700
				0.9 NM 0.8 NM 3.5 NM 7 NM
CATEGORY	A	B	C	D
S-ILS 32		225/18	200 (200-½)	
S-LOC 32	580/24	555 (600-½)	580/60	555 (600-1¼)
CIRCLING	680-1	654 (700-1)	680-1¾ 654 (700-1¾)	1100-3 1074 (1100-3)
	DEXOW FIX MINIMUMS			
S-LOC 32		340/24	315 (400-½)	
CIRCLING	680-1	654 (700-1)	680-1¾ 654 (700-1¾)	1100-3 1074 (1100-3)

SE-4, 15 MAY 2025 to 12 JUN 2025

SE-4, 15 MAY 2025 to 12 JUN 2025