


APP CRS	Rwy Idg	9000
	TDZE	998
275°	Apt Elev	1026

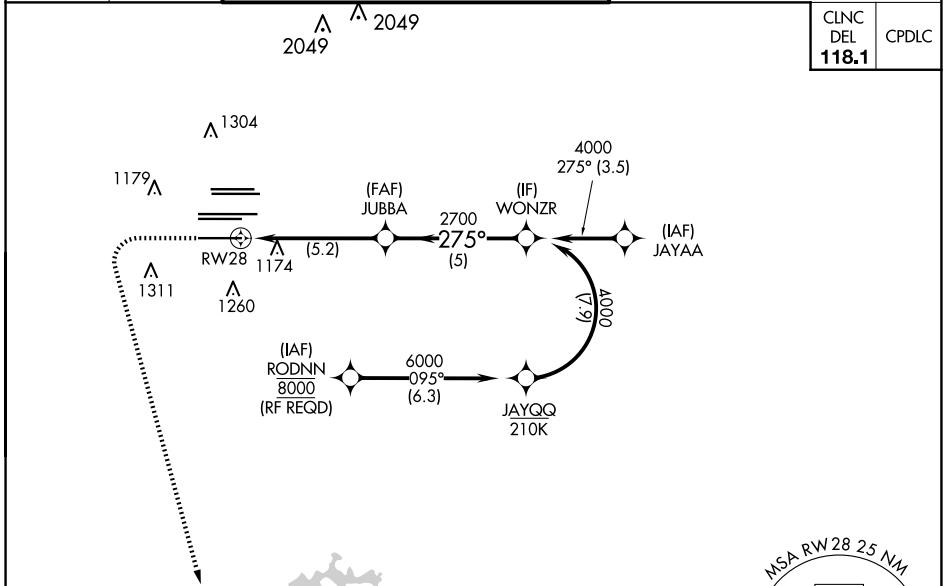
RNAV (RNP) Z RWY 28

HARTSFIELD/JACKSON ATLANTA INTL (ATL)

For uncompensated Baro-VNAV systems, procedure NA below -8°C (18°F) or above 54°C (130°F). GPS required. Simultaneous approach authorized; arrival from RODNN NA. For inop ALS, increase RNP 0.11 DA all Cats visibility to RVR 4000 and RNP 0.30 DA all Cats visibility to RVR 4500.

ALS-F-2  MISSED APPROACH: Climb to 1500 then climbing left turn to 3000 direct SCARR and hold.

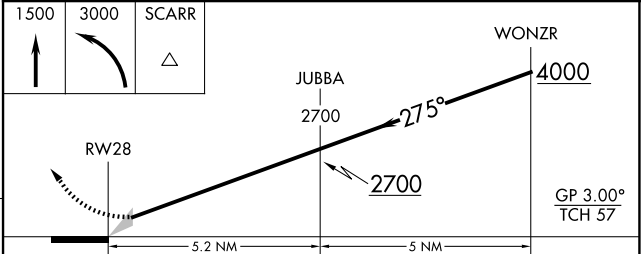
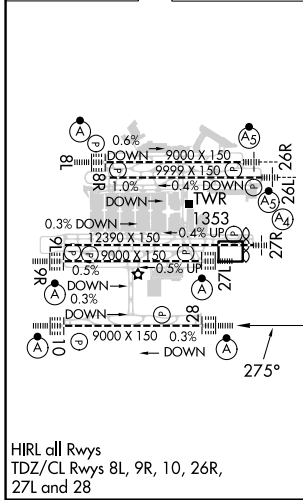
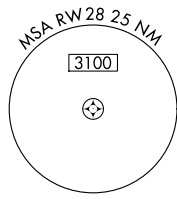
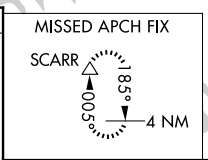
D-ATIS	ATLANTA	ATLANTA TOWER				ALL	GND CON	ALL
ARR 119.65	APP CON	8L-26R	8R-26L	9L-27R	9R-27L	10-28	RWYS (8L-26R,8R-26L)	(9L-27R,9R-27L) 10-28
DEP 125.55	127.9 379.9	119.1	125.325	123.85	119.3	119.5	254.4	121.9 121.75 121.65 254.4



SE-4, 15 MAY 2025 to 12 JUN 2025

SE-4, 15 MAY 2025 to 12 JUN 2025

ELEV 1026	D	TDZE 998
-----------	----------	----------



CATEGORY	A	B	C	D
RNP 0.11 DA		1248/24	250 (300-1/2)	
RNP 0.30 DA		1295/24	297 (300-1/2)	

AUTHORIZATION REQUIRED