

WAAS CH <b>99300</b> <b>W08B</b>	APP CRS <b>095°</b>	Rwy Idg TDZE <b>1015</b> Apt Elev <b>1026</b>
----------------------------------------	------------------------	-----------------------------------------------------

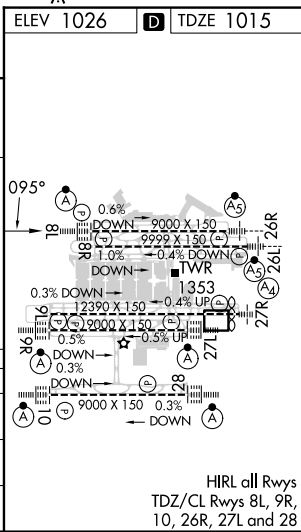
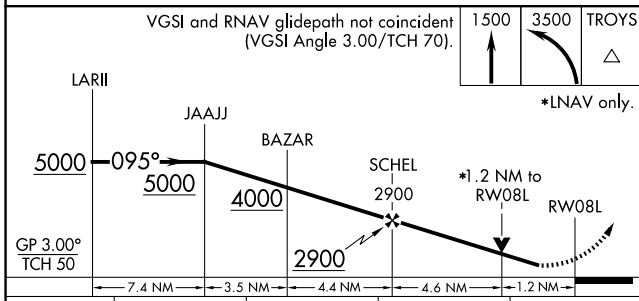
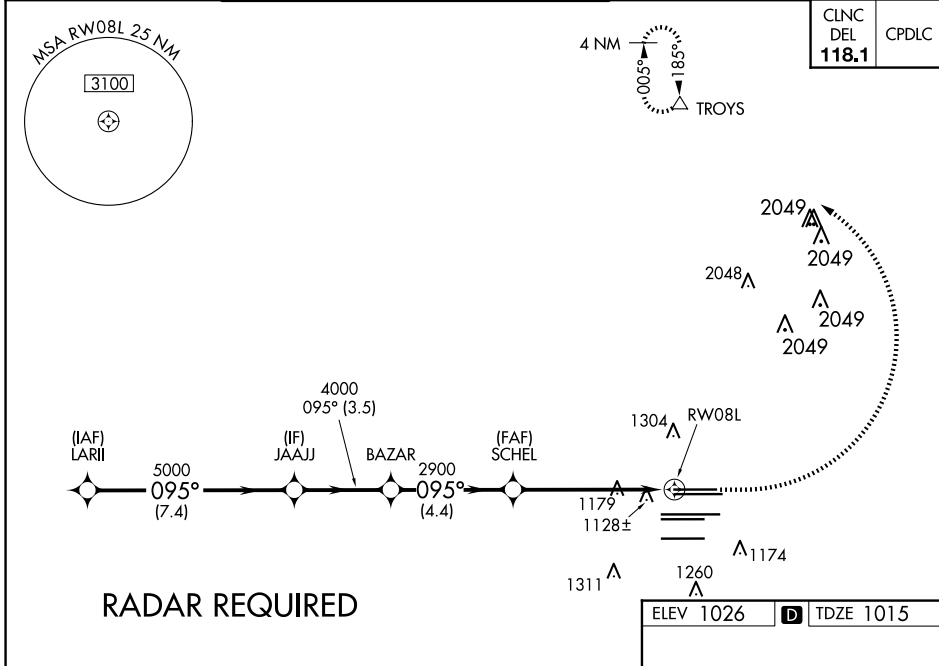
# RNAV (GPS) Y RWY 8L

HARTSFIELD/JACKSON ATLANTA INTL (ATL)

▼ For uncompensated Baro-VNAV systems, LNAV/VNAV NA below -7°C (20°F) or above 54°C (130°F). DME/DME RNP-0.3 NA. For inop ALSF-2, increase LNAV/VNAV all Cats visibility to 1¼ miles. Helicopter visibility reduction below RVR 4000 NA. LNAV procedure NA during simultaneous operations. Simultaneous approach authorized with Rwy 9L or 9R or 10, or Rwy 8L and 10. Use of FD or AP providing RNAV track guidance required during simultaneous operations.

ALSF-2  
MISSED APPROACH:  
Climb to 1500 then  
climbing left turn to  
3500 direct TROYS  
and hold.

D-ATIS ARR <b>119.65</b>	ATLANTA APP CON	ATLANTA TOWER					ALL RWYS	GND CON	ALL RWYS		
DEP <b>125.55</b>	<b>127.9 379.9</b>	<b>119.1</b>	<b>125.325</b>	<b>123.85</b>	<b>119.3</b>	<b>119.5</b>	<b>254.4</b>	<b>121.9</b>	<b>121.75</b>	<b>121.65</b>	<b>254.4</b>



CATEGORY	A	B	C	D
LPV DA		1215/18	200 (200-½)	
LNAV/VNAV DA		1404/45	389 (400-¾)	
LNAV MDA	1460/24	445 (500-½)	1460/45	445 (500-¾)

SE-4, 15 MAY 2025 to 12 JUN 2025

SE-4, 15 MAY 2025 to 12 JUN 2025