

ATLANTA, GEORGIA

AL-26 (FAA)

25051

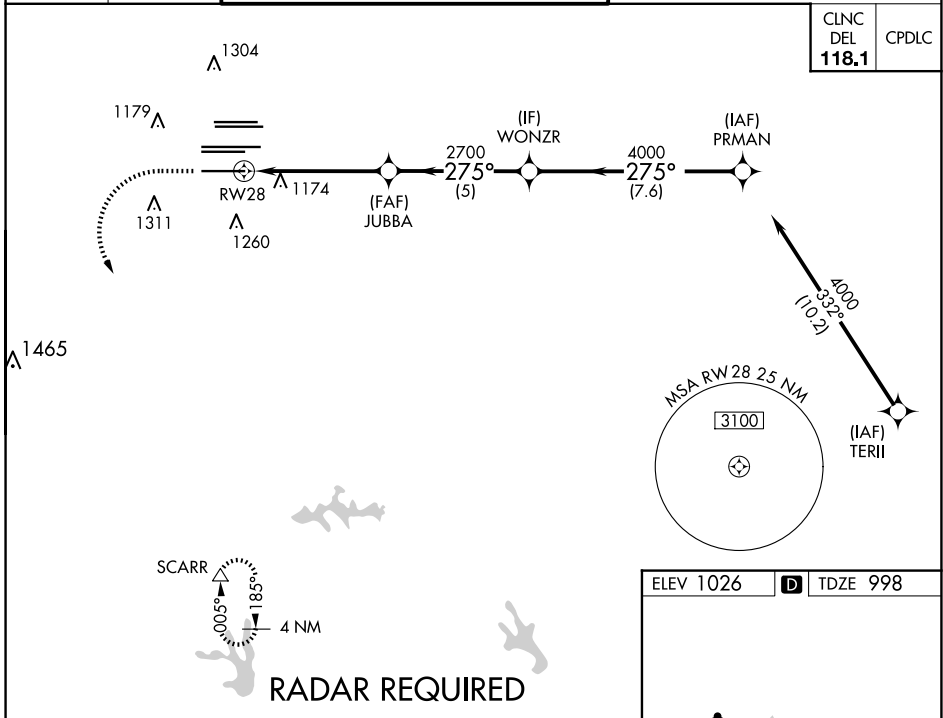
RNAV (GPS) PRM Y RWY 28 (SIMULTANEOUS CLOSE PARALLEL) HARTSFIELD/JACKSON ATLANTA INTL (ATL)

WAAS CH 61299 W28A	APP CRS 275°	Rwy Idg TDZE 998 Apt Elev 1026	9000
--	------------------------	--	-------------

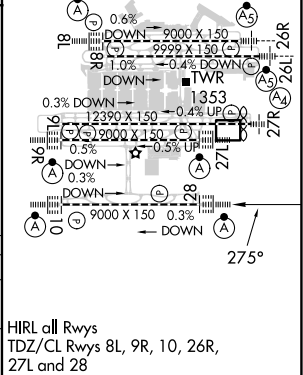
For uncompensated Baro-VNAV systems, LNAV/VNAV NA below -7°C (20°F) or above 54°C (130°F). DME/DME RNP-0.3 NA. Simultaneous close parallel approach authorized with ILS PRM and RNAV PRM Rwy 26R or 26L or 27R or 27L, or Rwys 26R and 27R, or Rwys 26R and 27L, or Rwys 26L and 27R, or Rwys 26L and 27L. Use of FD or AP providing RNAV track guidance required during simultaneous operations. Dual VHF Comm required. See additional requirements on AAUP.

ALSF-2
MISSED APPROACH: Climb to 1500 then climbing left turn to 3000 direct SCARR and hold.

D-ATIS ARR 119.65 DEP 125.55	ATLANTA APP CON 127.9 379.9	ATLANTA TOWER 8L-26R 8R-26L 9L-27R 9R-27L 10-28 RWYS 119.1 125.325 123.85 119.3 119.5 254.4 PRM 133.425	ALL RWYS (8L-26R,8R-26L) (9L-27R,9R-27L) 10-28 121.9 121.75 121.65 254.4	GND CON 121.75 121.65	ALL RWYS 254.4
--	---------------------------------------	--	---	---------------------------------	--------------------------



1500	3000	SCARR	
↑	↘	△	
	JUBBA	WONZR	PRMAN
	2700	4000	4000
	2700	275°	275°
	5.2 NM	5 NM	7.6 NM
CATEGORY	A	B	C
LPV DA		1198/18	200 (200-½)
LNAV/VNAV DA		1250/24	252 (300-½)
			GP 3.00° TCH 57'



ATLANTA, GEORGIA
Orig-A 12OCT17

33°38'N-84°26'W

HARTSFIELD/JACKSON ATLANTA INTL (ATL)

RNAV (GPS) PRM Y RWY 28 (SIMULTANEOUS CLOSE PARALLEL)

SE-4, 15 MAY 2025 to 12 JUN 2025

SE-4, 15 MAY 2025 to 12 JUN 2025