

ATLANTA, GEORGIA

AL-26 (FAA)

25051

# RNAV (GPS) PRM RWY 9R (SIMULTANEOUS CLOSE PARALLEL) HARTSFIELD/JACKSON ATLANTA INTL (ATL)

WAAS CH <b>97400</b> <b>W09B</b>	APP CRS <b>095°</b>	Rwy ldg <b>9000</b> TDZE <b>1026</b> Apt Elev <b>1026</b>
--	------------------------	---

**NA** For uncompensated Baro-VNAV systems, LNAV/VNAV NA below -7°C (20°F) or above 54°C (130°F). DME/DME RNP-0.3 NA. Simultaneous close parallel approach authorized with ILS PRM and RNAV PRM Rwy 8L or 8R or 10, or Rwy 8L and 10, or Rwy 8R and 10. Dual VHF comm required. See additional requirements on AAUP. Use of FD or AP providing RNAV track guidance required during simultaneous operations.

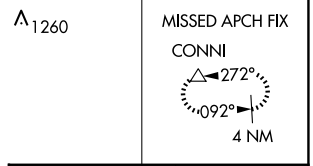
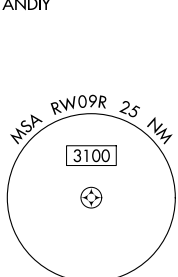
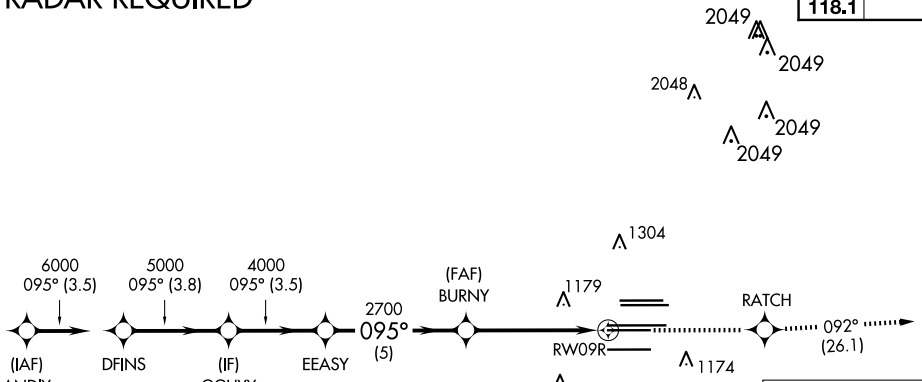
**ALS-F-2**  
**A**

**MISSED APPROACH:**  
Climb to 4000 direct RATCH and on track 092° to CONNI and hold.

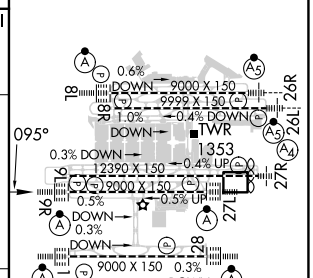
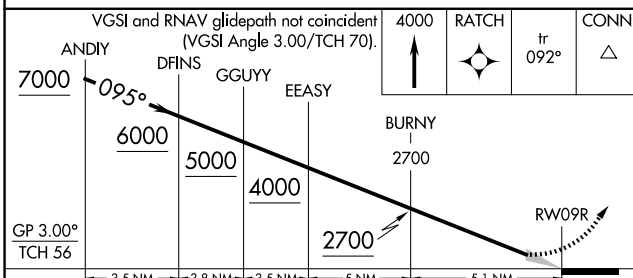
D-ATIS ARR <b>119.65</b> DEP <b>125.55</b>	ATLANTA APP CON <b>127.9 379.9</b>	ATLANTA TOWER 8L-26R 8R-26L 9L-27R 9R-27L 10-28 RWYS <b>119.1 125.325 123.85 119.3 119.5 254.4</b> PRM <b>132.55</b>	ALL RWYS (8L-26R,8R-26L) (9L-27R,9R-27L) 10-28 <b>121.9 121.75 121.65 254.4</b>	GND CON <b>121.75 121.65 254.4</b>	ALL RWYS
--	--	---	--	---------------------------------------	-------------

## RADAR REQUIRED

CLNC DEL <b>118.1</b>	CPDLC
-----------------------------	-------



ELEV 1026	<b>D</b> TDZE 1026
-----------	--------------------



CATEGORY	A	B	C	D
LPV DA		1226/18	200 (200-½)	
LNAV/VNAV DA		1403/40	377 (400-¾)	

HIRL all Rwy's  
TDZ/CL Rwy's 8L, 9R, 10, 26R, 27L and 28

ATLANTA, GEORGIA  
Orig-A 12OCT17

33°38'N-84°26'W

HARTSFIELD/JACKSON ATLANTA INTL (ATL)

# RNAV (GPS) PRM RWY 9R (SIMULTANEOUS CLOSE PARALLEL)

SE-4, 15 MAY 2025 to 12 JUN 2025

SE-4, 15 MAY 2025 to 12 JUN 2025