

LOC/DME I-OMO 111.55 Chan 52 (Y)	APP CRS 095°	Rwy Idg 9000 TDZE 1000 Apt Elev 1026
--	------------------------	--

ILS RWY 10 (SA CAT I)

HARTSFIELD/JACKSON ATLANTA INTL (ATL)

DME or RADAR required. RNP APCH - GPS from YINNZ.

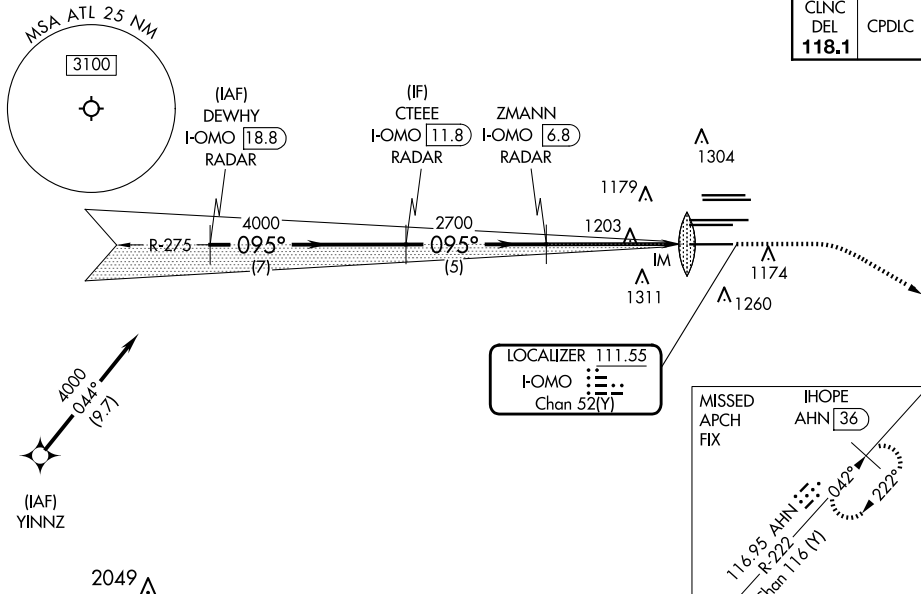
ALSF-2

MISSED APPROACH: Climb to 1400 then climbing right turn to 3000 on heading 120° and AHN R-222 to IHOPE/AHN 36 DME and hold.

Simultaneous approach authorized with Rwy 9L or 8R or 8L, or Rwy 9L and 8L. Requires specific OPSPEC, MSPEC, or LOA approval and use of HUD to DH.

D-ATIS ARR 119.65	ATLANTA APP CON 127.9 379.9	ATLANTA TOWER 8L-26R 8R-26L 9L-27R 9R-27L 10-28 RWYS 119.1 125.325 123.85 119.3 119.5 254.4				ALL RWYS 121.9	GND CON 121.75	ALL RWYS 121.65 254.4
-----------------------------	--	--	--	--	--	-----------------------------	--------------------------	------------------------------------

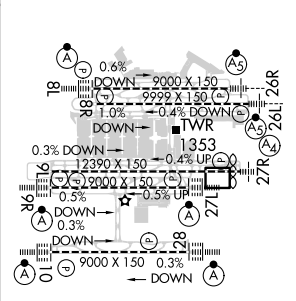
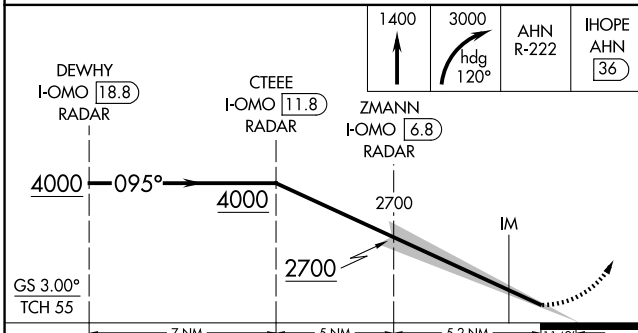
CLNC DEL 118.1	CPDLC
-----------------------------	-------



SE-4, 15 MAY 2025 to 12 JUN 2025

SE-4, 15 MAY 2025 to 12 JUN 2025

ELEV	1026	D	TDZE	1000
------	------	---	------	------



CATEGORY	A	B	C	D
S-ILS 10	RA 180/14 150 DA 1150			

SA CATEGORY I ILS - SPECIAL AIRCREW & AIRCRAFT CERTIFICATION REQUIRED

HIRL all Rwy's
TDZ/CL Rwy's 8L,
9R, 10, 26R, 27L and 28