

LOC/DME I-OMO 111.55 Chan 52 (Y)	APP CRS 095°	Rwy ldg 9000 TDZE 1000 Apt Elev 1026
--	------------------------	---

ILS RWY 10 (CAT II & III)

HARTSFIELD/JACKSON ATLANTA INTL (ATL)

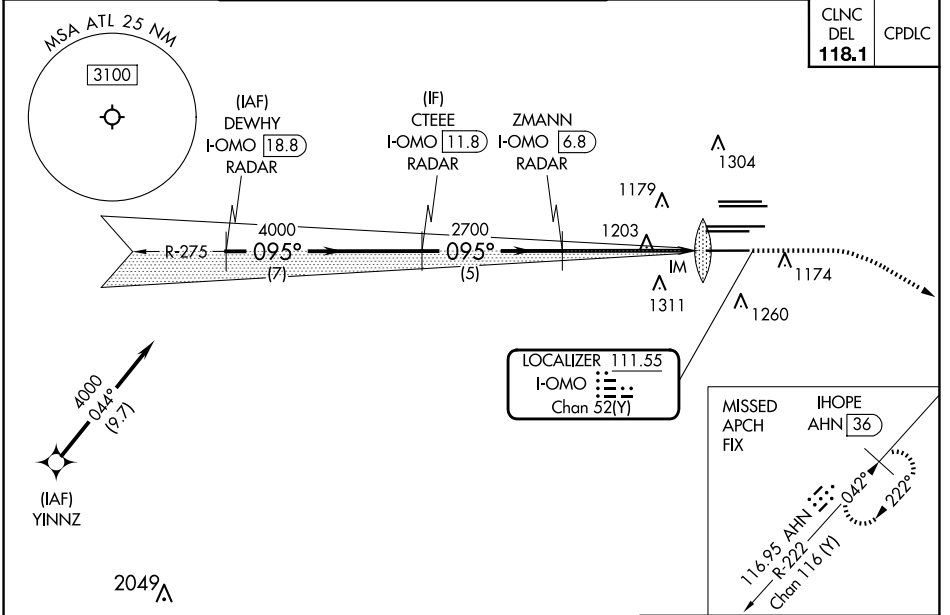
DME or RADAR required. RNP APCH - GPS from YINNZ.

Simultaneous approach authorized with Rwy 9L or 8R or 8L, or Rwy 9L and 8L.

ALSF-2

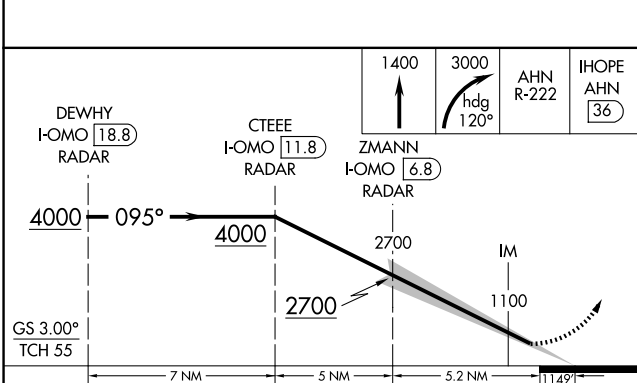
MISSED APPROACH: Climb to 1400 then climbing right turn to 3000 on heading 120° and AHN R-222 to IHOPE/AHN 36 DME and hold.

D-ATIS ARR 119.65 DEP 125.55	ATLANTA APP CON 127.9 379.9	ATLANTA TOWER 8L-26R 8R-26L 9L-27R 9R-27L 10-28 RWYS 119.1 125.325 123.85 119.3 119.5 254.4				ALL RWYS 121.9	GND CON 8L-26R,8R-26L) (9L-27R,9R-27L) 10-28 RWYS 121.75 121.65 254.4
--	--	--	--	--	--	-----------------------------	--



SE-4, 15 MAY 2025 to 12 JUN 2025

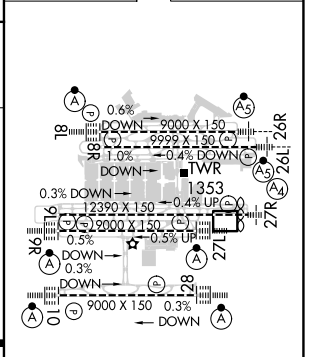
SE-4, 15 MAY 2025 to 12 JUN 2025



ELEV	1026	TDZE	1000
------	------	------	------

CATEGORY	A	B	C	D
S-ILS 10	CAT II RA 110/12 100 DA 1100			
S-ILS 10	CAT III RVR 07			

CATEGORY II & III ILS - SPECIAL AIRCREW & AIRCRAFT CERTIFICATION REQUIRED



HIRL all Rwy
TDZ/CL Rwy 8L,
9R, 10, 26R, 27L and 28