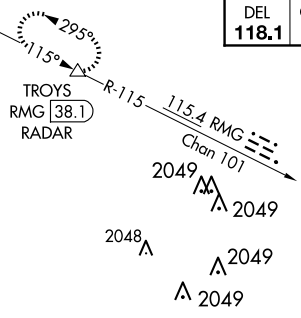
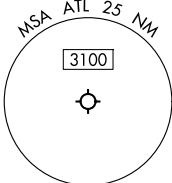


LOC/DME I-HFW 109.3 Chan 30	APP CRS 095°	Rwy Idg 8800 TDZE 1015 Apt Elev 1026
---	------------------------	---

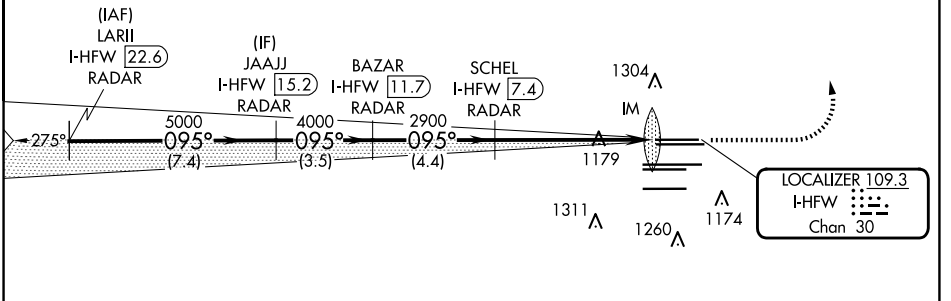
ILS RWY 8L (SA CAT I)

HARTSFIELD/JACKSON ATLANTA INTL (ATL)

RADAR required for procedure entry. DME or RADAR required.		ALSIF-2		MISSED APPROACH: Climb to 1500 then climbing left turn to 3500 on heading 360° and RMG VORTAC R-115 to TROYS/RMG 38.1 DME/RADAR and hold.	
Simultaneous approach authorized. Requires specific OPSPEC, MSPEC, or LOA approval.					
D-ATIS ARR 119.65 DEP 125.55	ATLANTA APP CON 127.9 379.9	ATLANTA TOWER 8L-26R 8R-26L 9L-27R 9R-27L 10-28 RWYS 119.1 125.325 123.85 119.3 119.5 254.4		ALL RWYS 254.4	GND CON 9L-27R, 9R-27L 10-28 RWYS 121.9 121.75 121.65 254.4

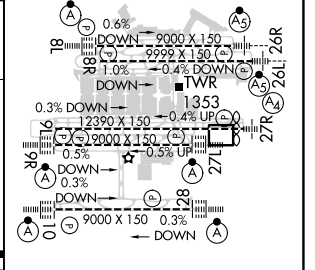
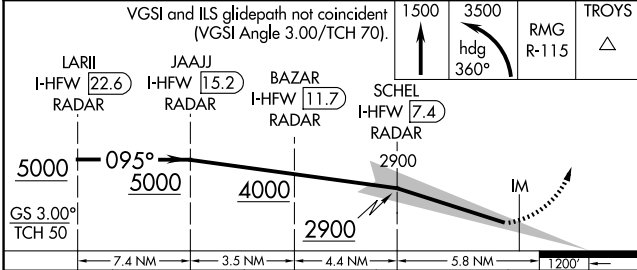


CLNC DEL	CPDLC
118.1	



LOCALIZER 109.3 I-HFW Chan 30

ELEV 1026	<input checked="" type="checkbox"/> TDZE 1015
-----------	---



CATEGORY	A	B	C	D
S-ILS 8L	RA 147/14 150 DA 1165			

SA CATEGORY I ILS - SPECIAL AIRCREW & AIRCRAFT CERTIFICATION REQUIRED

HIRL all Rwsy
TDZ/CL Rwsy 8L, 9R,
10, 26R, 27L and 28

SE-4, 15 MAY 2025 to 12 JUN 2025

SE-4, 15 MAY 2025 to 12 JUN 2025