

ATLANTA, GEORGIA

AL-26 (FAA)

25051

ILS PRM RWY 10 (SA CAT I)  
(CLOSE PARALLEL)

HARTSFIELD/JACKSON ATLANTA INTL (ATL)

LOC/DME I-OMO <b>111.55</b> Chan <b>52(Y)</b>	APP CRS <b>095°</b>	Rwy Idg <b>9000</b> TDZE <b>1000</b> Apt Elev <b>1026</b>
---	------------------------	---

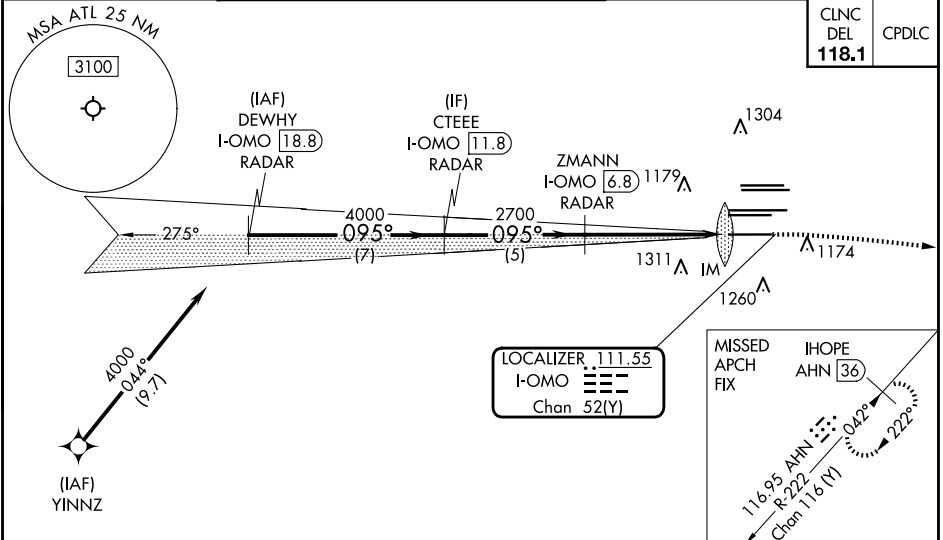
DME or RADAR required.  
RNP APCH - GPS from YINNZ.

Simultaneous approach authorized. Procedure NA when glide slope not available (ILS procedures only). Dual VHF Comm required. See additional requirements on AAUP. Requires special OPSPEC, MSPEC, or LOA approval and use of HUD to DH.

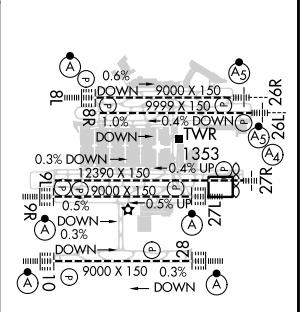
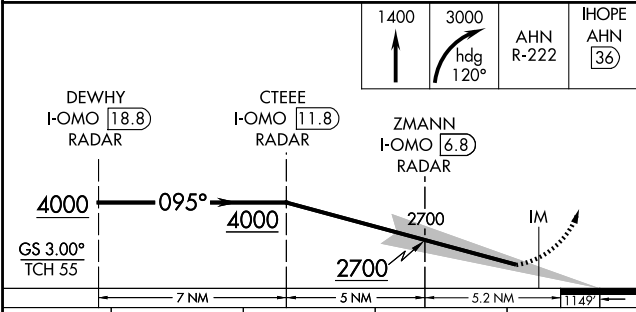
ALS F-2

MISSED APPROACH: Climb to 1400 then climbing right turn to 3000 on heading 120° and AHN R-222 to IHOPE/AHN 36 DME and hold.

D-ATIS ARR <b>119.65</b> DEP <b>125.55</b>	ATLANTA APP CON <b>127.9 379.9</b>	ATLANTA TOWER 8L-26R 8R-26L 9L-27R 9R-27L <b>119.1 125.325 123.85 119.3 119.5 254.4</b> <b>PRM 133.425</b>	ALL 10-28 RWYS <b>121.9 121.75 121.65 254.4</b>	GND CON (8L-26R, 8R-26L) (9L-27R, 9R-27L) 10-28 RWYS <b>121.9 121.75 121.65 254.4</b>
--	--	---	---	---



ELEV 1026	TDZE 1000
-----------	-----------



CATEGORY	A	B	C	D
S-ILS 10	RA 180/14 150 DA 1150			

SA CATEGORY I ILS - SPECIAL AIRCREW & AIRCRAFT CERTIFICATION REQUIRED

HIRL all Rwy's  
TDZ/Cl Rwy's 8L, 9R, 10, 26R, 27L and 28

SE-4, 15 MAY 2025 to 12 JUN 2025

SE-4, 15 MAY 2025 to 12 JUN 2025

ATLANTA, GEORGIA  
Amdt 5 30DEC21

33°38'N-84°26'W HARTSFIELD/JACKSON ATLANTA INTL (ATL)  
ILS PRM RWY 10 (SA CAT I) (CLOSE PARALLEL)