

LOC/DME I-OMO 111.55 Chan 52 (Y)	APP CRS 095°	Rwy Idg 9000 TDZE 1000 Apt Elev 1026
--	------------------------	---

ILS or LOC RWY 10

HARTSFIELD/JACKSON ATLANTA INTL (ATL)

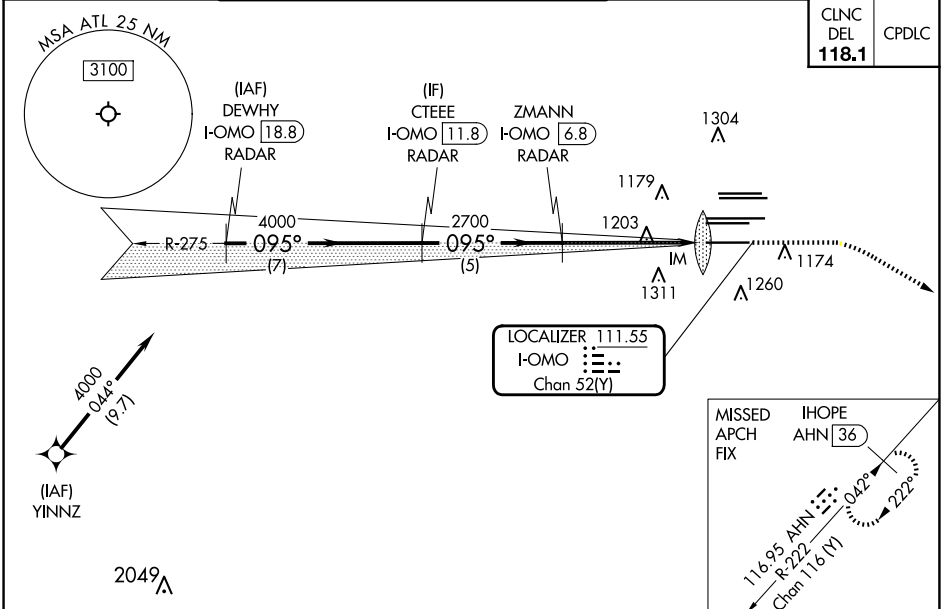
DME or RADAR required. RNP APCH - GPS from YINNZ.

Simultaneous approach authorized with Rwy 9L or 8R or 8L, or Rwy 9L and 8L. Localizer not suitable for electronic rollout guidance.

ALSF-2

MISSED APPROACH: Climb to 1400 then dimbing right turn to 3000 on heading 120° and AHN R-222 to IHOPE/AHN 36 DME and hold.

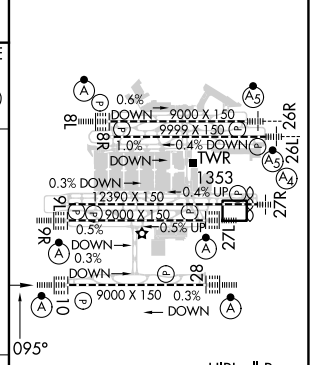
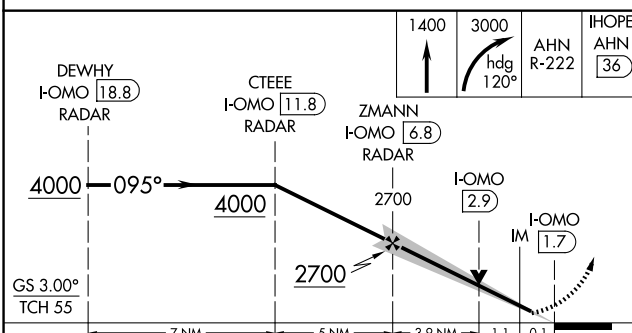
D-ATIS ARR 119.65 DEP 125.55	ATLANTA APP CON 127.9 379.9	ATLANTA TOWER 8L-26R 8R-26L 9L-27R 9R-27L 10-28 RWYs				ALL RWYs 254.4	GND CON 121.9	ALL RWYs 254.4
--	--	---	--	--	--	-----------------------------	-------------------------	-----------------------------



SE-4, 15 MAY 2025 to 12 JUN 2025

SE-4, 15 MAY 2025 to 12 JUN 2025

ELEV	1026	TDZE	1000
------	------	------	------



CATEGORY	A	B	C	D
S-ILS 10	1200/18		200 (200-½)	
S-LOC 10	1460/24	460 (500-½)	1460/45	460 (500-¾)

HIRL all Rwy's TDZ/CL Rwy's 8L, 9R, 10, 26R, 27L and 28				
FAF to MAP 5.2 NM				
Knots	60	90	120	150
Min:Sec	5:12	3:28	2:36	2:05

ILS or LOC RWY 10