

ATLANTA, GEORGIA

AL-26 (FAA)

25051

LOC/DME I-HZK 110.5 Chan 42	APP CRS 095°	Rwy Idg 9L 11730 9000 9R 1019 1026 TDZE Apt Elev 1026 1026
---	------------------------	---

ILS or LOC RWY 9L

HARTSFIELD/JACKSON ATLANTA INTL (ATL)

RADAR required for procedure entry, DME.

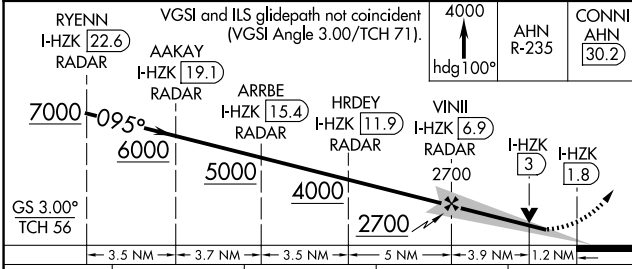
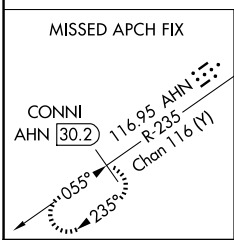
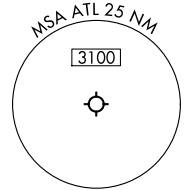
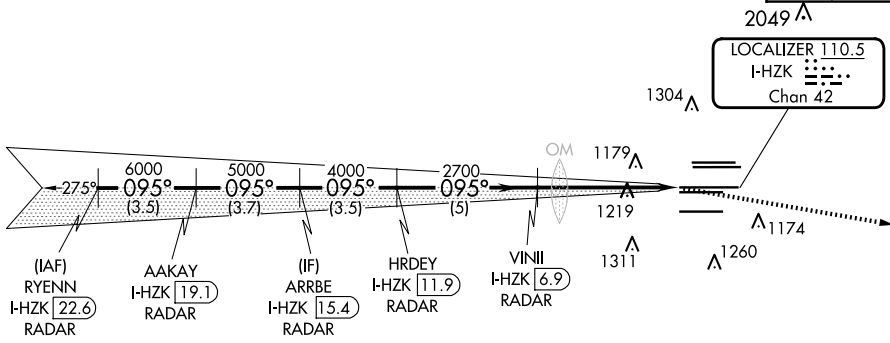
Simultaneous approach authorized.
Rwy 9L helicopter visibility reduction below RVR 4000 NA.



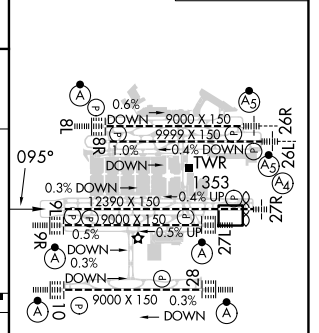
MISSED APPROACH: Climb to 4000 on heading 100° and AHN VOR/DME R-235 to CONNI/AHN 30.2 DME and hold.

D-ATIS ARR 119.65	ATLANTA APP CON 127.9 379.9	ATLANTA TOWER 8L-26R 8R-26L 9L-27R 9R-27L 10-28 RWYS				ALL RWYS (8L-26R,8R-26L) (9L-27R,9R-27L) 10-28	GND CON 121.9	ALL RWYS 121.75 121.65 254.4
-----------------------------	--	---	--	--	--	--	-------------------------	---

CINC DEL 118.1	CPDLC
-----------------------------	-------



ELEV 1026	TDZE 9L 1019	TDZE 9R 1026
-----------	--------------	--------------



CATEGORY	A	B	C	D
S-ILS 9L	1359/50		340 (400-1)	
S-LOC 9L	1480/55	461 (500-1)	1480-1 3/8	461 (500-1 3/8)
SIDESTEP 9R	1480/55	454 (500-1)	1480-1 3/8 454 (500-1 3/8)	1480-1 1/2 454 (500-1 1/2)

HIRL all Rwys TDZ/CL Rwys 8L, 9R, 10, 26R, 27L and 28					
FAF to MAP 5.1 NM					
Knots	60	90	120	150	180
Min:Sec	5:06	3:24	2:33	2:02	1:42

ATLANTA, GEORGIA
Amdt 11 22APR21

33°38'N-84°26'W

HARTSFIELD/JACKSON ATLANTA INTL (ATL)

ILS or LOC RWY 9L

SE-4, 15 MAY 2025 to 12 JUN 2025

SE-4, 15 MAY 2025 to 12 JUN 2025