

LOC/DME I-ATL 109.9 Chan 36	APP CRS 095°	Rwy Idg TDZE Apt Elev	8R 9999 8800 1024 1015 1026 1026	8L 8800 1015 1026
---	------------------------	-----------------------------	--	---

ILS or LOC RWY 8R

HARTSFIELD/JACKSON ATLANTA INTL (ATL)

RADAR required for procedure entry.
DME or RADAR required.

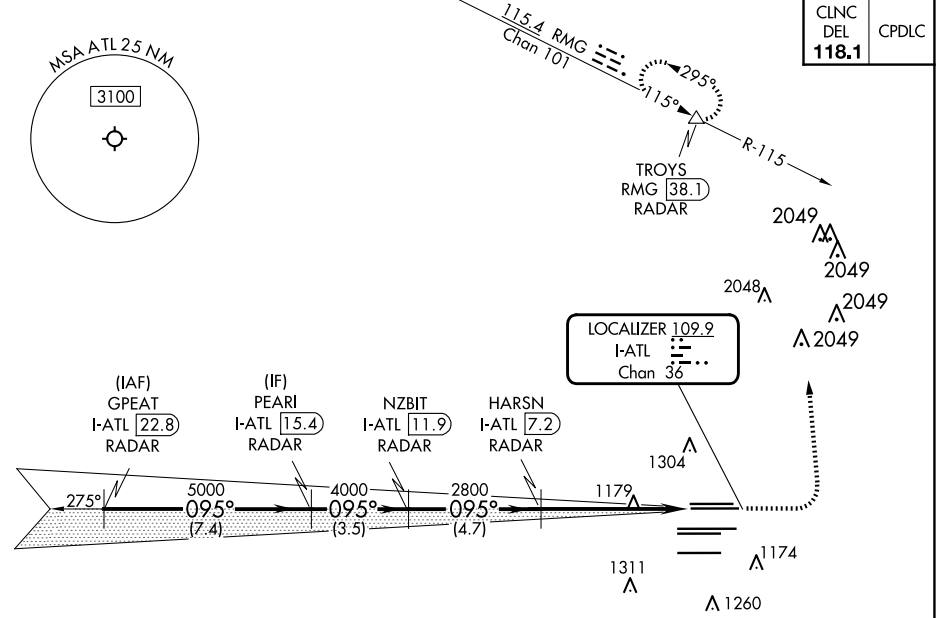
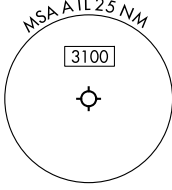
Simultaneous approach authorized. Sidestep 8L for inop ALSF-2, increase Cat E visibility to 2.



MISSED APPROACH: Climb to 1500 then climbing left turn to 3500 on heading 360° and RMG VORTAC R-115 to TROYS/RMG 38.1 DME/RADAR and hold.

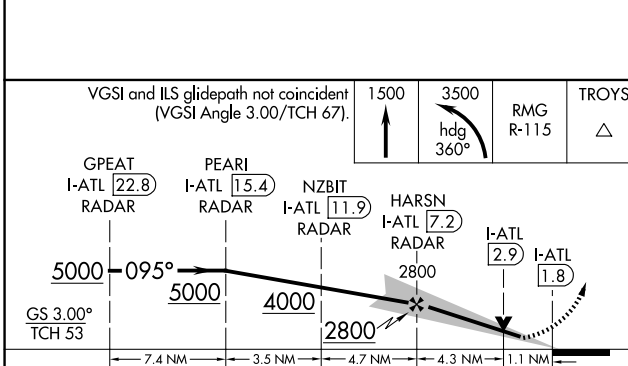
D-ATIS ARR 119.65	ATLANTA APP CON 127.9 379.9	ATLANTA TOWER				ALL RWYS	GND CON	ALL RWYS
DEP 125.55		8L-26R	8R-26L	9L-27R	9R-27L	10-28	(8L-26R, 8R-26L) (9L-27R, 9R-27L)	10-28
		119.1	125.325	123.85	119.3	119.5 254.4	121.9	121.75

CINC DEL	CPDLC
118.1	



SE-4, 15 MAY 2025 to 12 JUN 2025

SE-4, 15 MAY 2025 to 12 JUN 2025



ELEV 1026	TDZE 8R 1024	TDZE 8L 1015
-----------	--------------	--------------

VGSI and ILS glidepath not coincident (VGSI Angle 3.00/TCH 67).

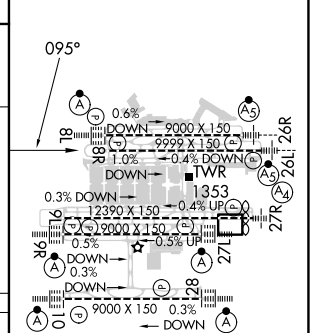
GPEAT I-ATL [22.8] RADAR

PEARL I-ATL [15.4] RADAR

NZBIT I-ATL [11.9] RADAR

HARSN I-ATL [7.2] RADAR

GS 3.00° TCH 53



CATEGORY	A	B	C	D	E
S-ILS 8R	1282/40		258 (300-3/4)		
S-LOC 8R	1440/55	416 (500-1)	1440/60 416 (500-1/4)		
SIDESTEP 8L	1440/55	425 (500-1)	1440/60 425 (500-1/4)	1440-1 1/2	425 (500-1/2)

HIRL all Rwys TDZ/CL Rwys 8L, 9R, 10, 26R, 27L and 28					
FAF to MAP 5.4 NM					
Knots	60	90	120	150	180
Min:Sec	5:24	3:36	2:42	2:10	1:48