

LOC I-ANB <b>111.5</b>	APP CRS <b>052°</b>	Rwy Idg <b>7000</b>
		TDZE <b>595</b>
		Apt Elev <b>612</b>

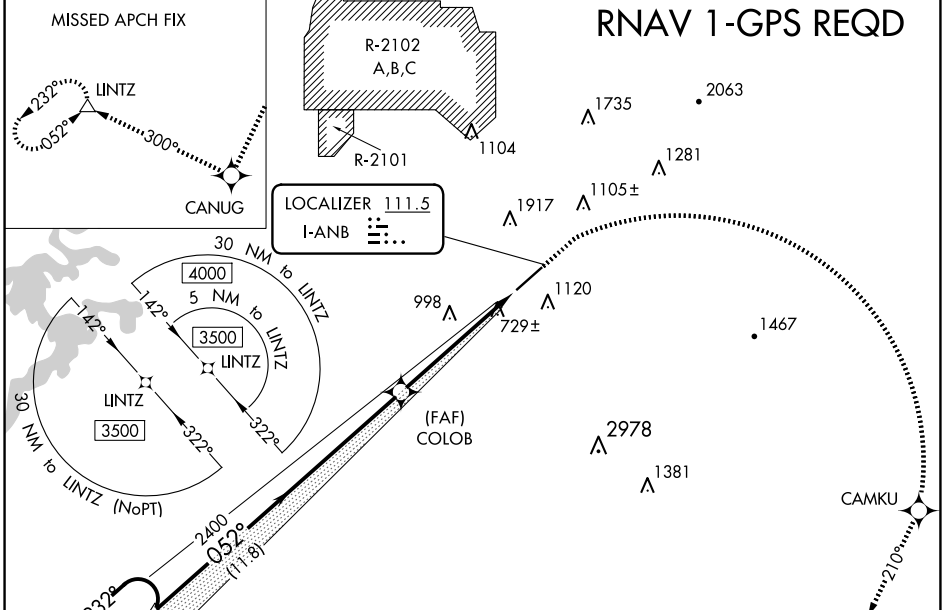
# ILS Y or LOC Y RWY 5

ANNISTON RGNL (ANB)

**⚠** Circling NA north of Rwy 5-23. RNAV 1-GPS required. For inop ALS, increase S-ILS 5 all Cats visibility to 1 SM. When local altimeter setting not received, use Gadsden altimeter setting: increase DA to 975 and all visibilities ¼ SM; increase all MDAs 80 feet, and S-LOC 5 Cat C/D, and Circling Cat C visibilities ½ SM. For inop ALS when using Gadsden altimeter setting: increase S-ILS 5 all Cats to 1¼ SM.

**MALSR**  
 MISSED APPROACH: Climb to 1600 then climbing right turn to 3500 direct CAMKU then on track 210° to CANUG and on track 300° to LINTZ and hold.

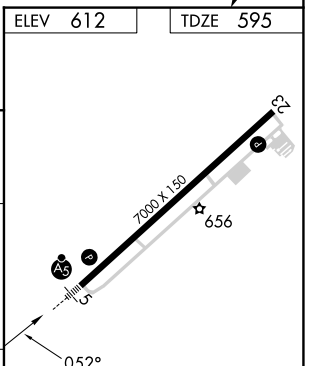
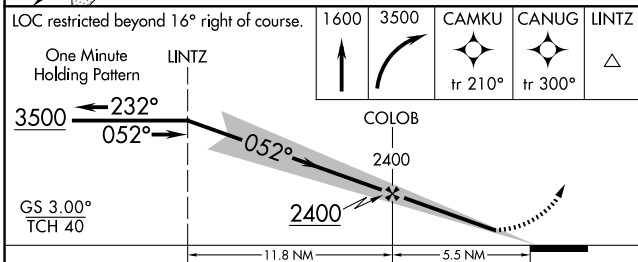
ASOS <b>119.675</b>	BIRMINGHAM APP CON <b>132.15 285.45</b>	CTAF <b>123.60</b>	UNICOM <b>123.0</b>
------------------------	--	-----------------------	------------------------



SE-4, 15 MAY 2025 to 12 JUN 2025

SE-4, 15 MAY 2025 to 12 JUN 2025

ELEV 612	TDZE 595
----------	----------



CATEGORY	A	B	C	D
S-ILS 5	909-½ 314 (300-½)			
S-LOC 5	1120-½	525 (600-½)	1120-1	525 (600-1)
<b>C</b> CIRCLING	1420-1	808 (900-1)	1420-2¼ 808 (900-2¼)	1820-3 1208 (1300-3)

FAF to MAP 5.5 NM					
Knots	60	90	120	150	180
Min:Sec	5:30	3:40	2:45	2:12	1:50